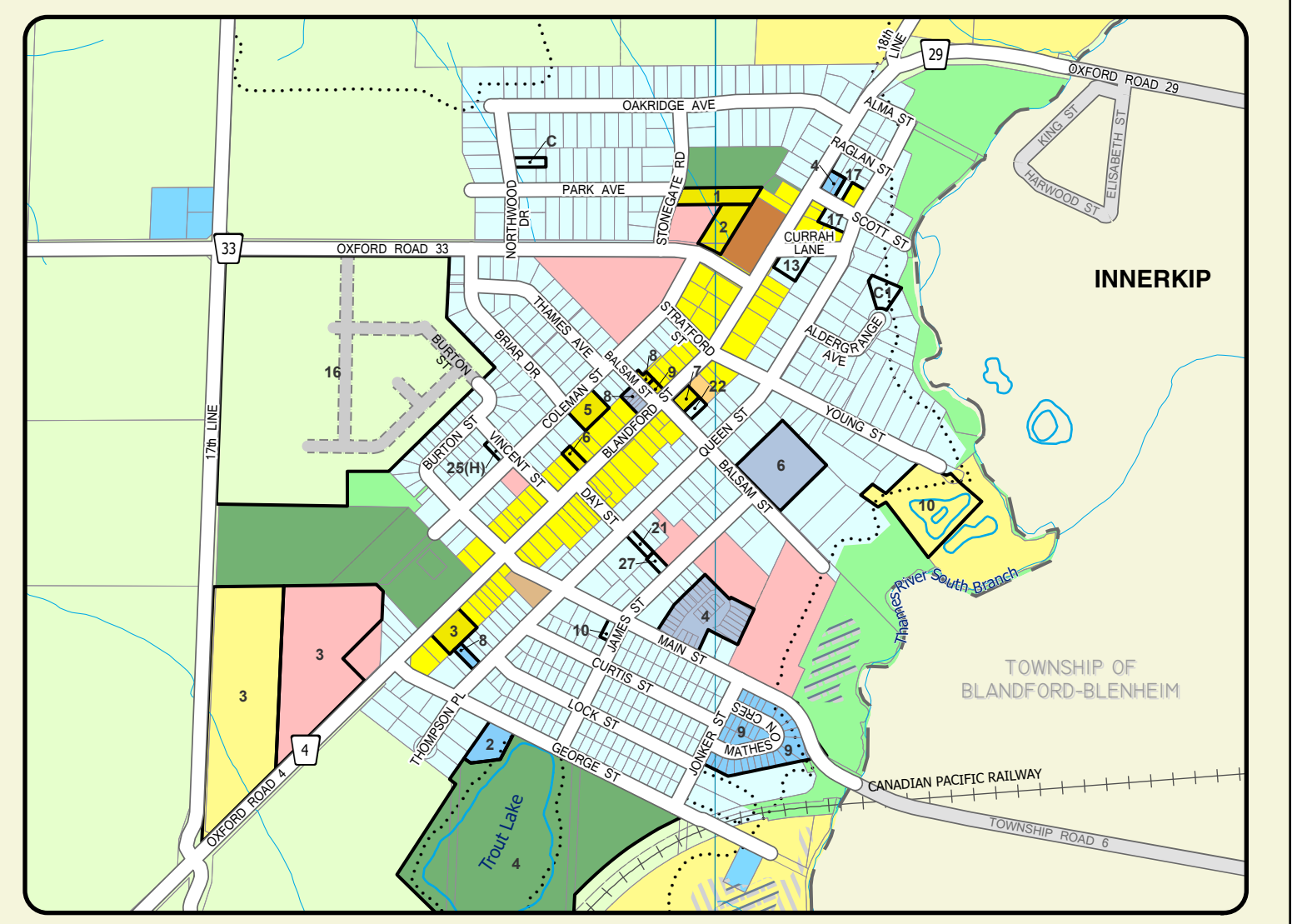
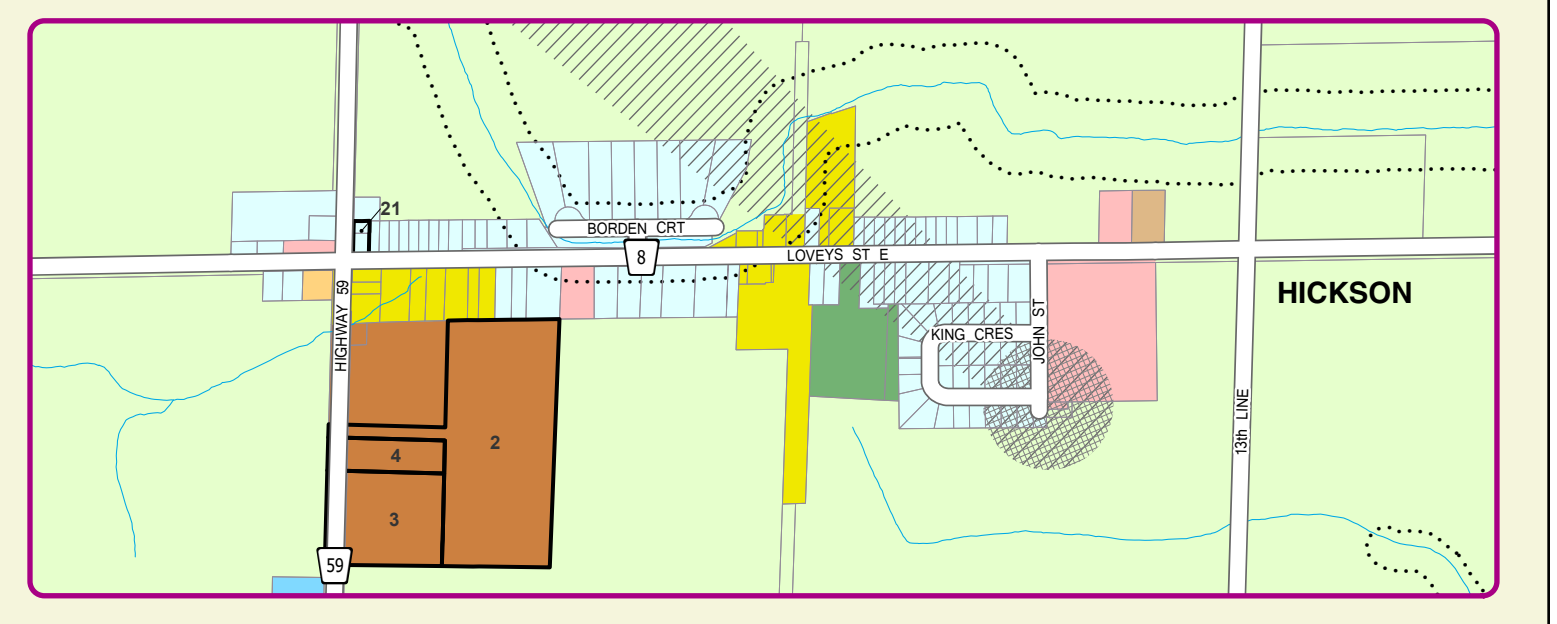
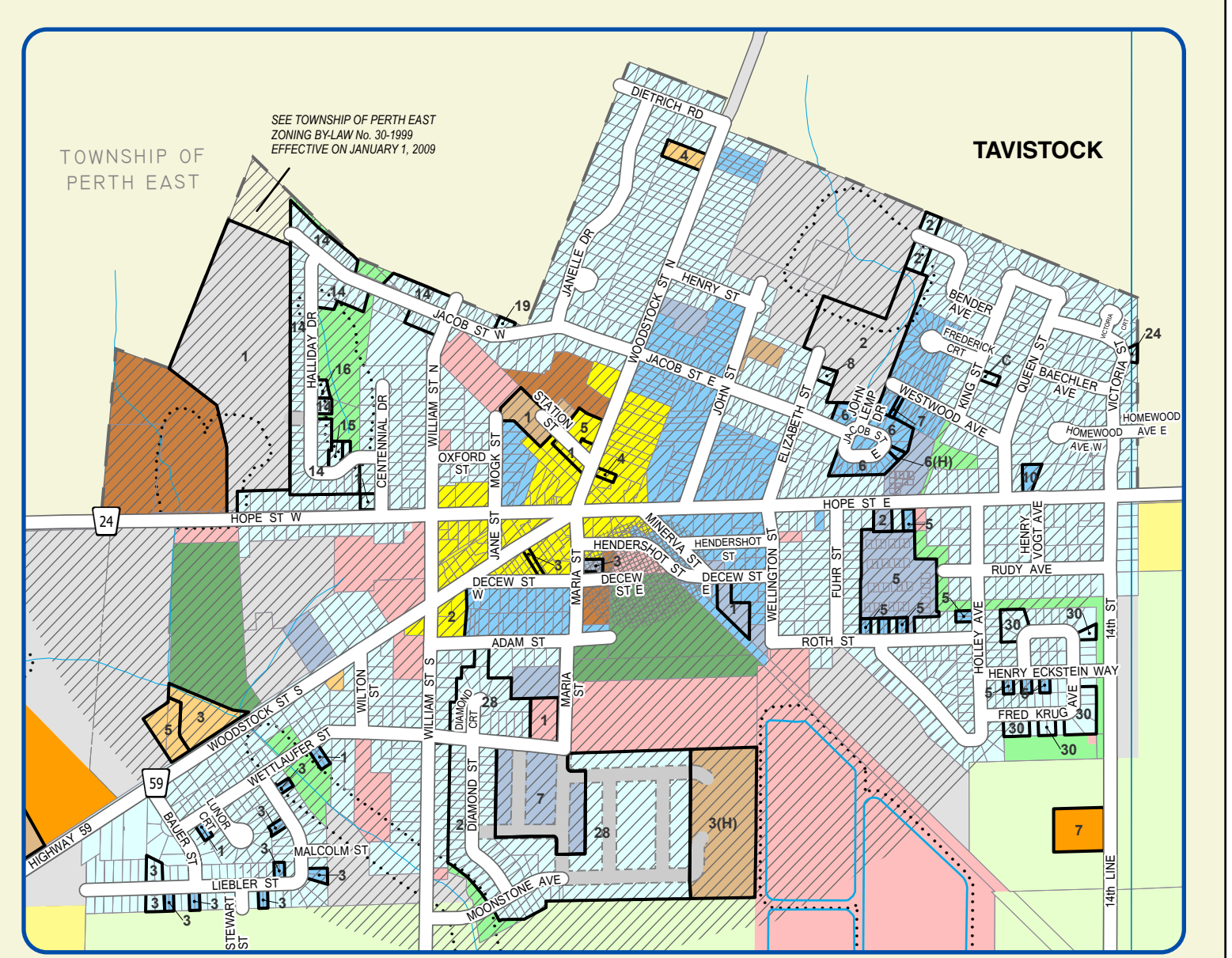
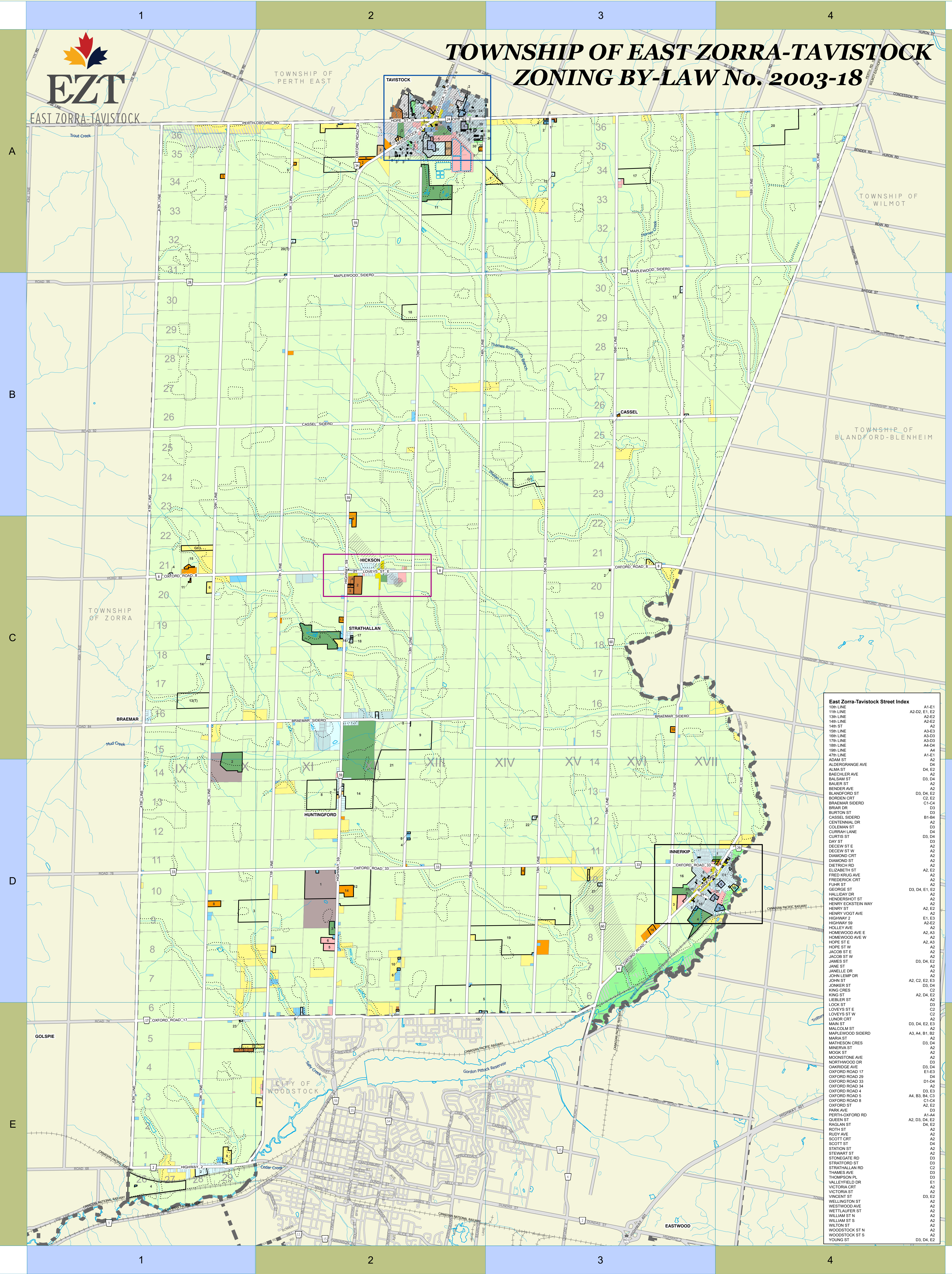




TOWNSHIP OF EAST ZORRA-TAVISTOCK ZONING BY-LAW No. 2003-18

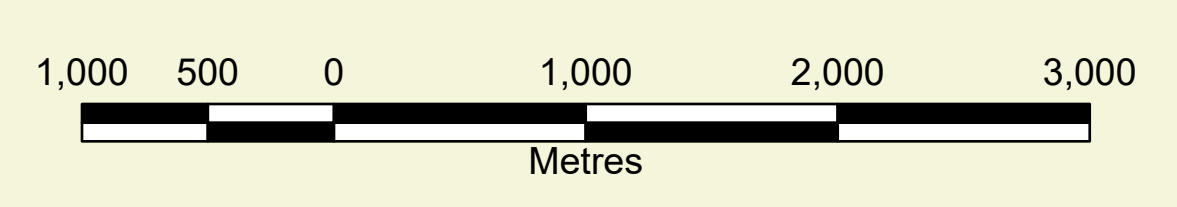


East Zorra-Tavistock Street Index

10R LINE	A1-E1
11R LINE	A2-D2, E1, E2
12R LINE	A2-E2
13R LINE	A2
14R LINE	A2
15R LINE	A3-E3
16R LINE	A3-D3
17R LINE	A3-D3
18R LINE	A4-D4
19R LINE	A4
20R LINE	A1-E1
21R LINE	A2
22R LINE	A2
23R LINE	A2
24R LINE	A2
25R LINE	A2
26R LINE	A2
27R LINE	A2
28R LINE	A2
29R LINE	A2
30R LINE	A2
31R LINE	A2
32R LINE	A2
33R LINE	A2
34R LINE	A2
35R LINE	A2
36R LINE	A2
ALMA ST	D4, E2
BAEHLER AVE	A2
BAUER ST	D3, D4
BENDER AVE	A2
BLANDFORD ST	D3, D4, E2
BORDEN CRT	C2, E2
BRAEMAR SIDERO	C1-C4
BRIAR DR	D3
BURTON ST	D3
CASSEL SIDERO	B1-B4
CENTENNIAL DR	A2
COLEMAN ST	D3
CURRAH LANE	D4
CURTIS ST	D3, D4
DAY ST	D3
DECEW ST E	A2
DECEW ST W	A2
DIAMOND CRT	A2
DIAMOND ST	A2
DIETRICH DR	A2
ELIZABETH ST	A2, E2
FRED KRUG AVE	A2
FREDERICK CRT	A2
FINE ST	D3, D4, E1, E2
GEORGE ST	A2
HALLWAY DR	A2
HENERSHOT ST	A2
HENRY ECKSTEIN WAY	A2, E2
HENRY ST	A2
HENRY VOGT AVE	E1, E2
HIGHWAY 2	A2-E2
HOLLEY AVE	A2, A3
HOMEWOOD AVE E	A2, A3
HOMEWOOD AVE W	A2
HOPE ST E	A2
HOPE ST W	A2
JACOB ST E	A2
JACOB ST W	D3, D4, E2
JAMES ST	A2
JANE ST	A2
JANELLE DR	A2
JOHN LEMP DR	A2
JOHN ST	A2, C2, E2, E3
JOHNS ST	D3, D4
KING CRT	C2
KING CRES	C2
KING ST	A2, D4, E2
LIEBLER ST	A2
LOCK ST	D3
LOVEYS ST E	A2
LOVEYS ST W	C2
LUNKER CRT	A2
MAIN ST	D3, D4, E2, E3
MALCOLM ST	A2
MAPLEWOOD SIDERO	A3, A4, B1, B2
MARIA ST	D3, D4
MATHESON CRES	A2
MINERVA ST	A2
MOON ST	A2
MOONSTONE AVE	A2
NORTHWOOD DR	D3, D4
CAMERON AVE	A2
OXFORD ROAD 17	E1-E3
OXFORD ROAD 29	D4
OXFORD ROAD 33	D1-D4
OXFORD ROAD 34	D3, E3
OXFORD ROAD 4	D3, E3
OXFORD ROAD 5	A4, B3, B4, C3
OXFORD ROAD 8	C1-C4
OXFORD ST	A2, E2
PARK AVE	D3
PERTH OXFORD RD	A1-A4
QUEEN ST	A2, D3, D4, E2
RAGLAN ST	D4, E2
ROTH ST	A2
RUBY AVE	A2
SCOTT CRT	D4
SCOTT ST	A2
STATION ST	A2
STERMAY ST	D3
STONEGATE RD	D3
STRATFORD ST	D3
STRATHALLAN RD	C2
THAMES AVE	D3
THOMPSON PL	E1
VALLEYFIELD DR	A2
VICTORIA CRT	A2
VICTORIA ST	D3, E2
VINCENT ST	A2
WELLINGTON ST	A2
WESTWOOD AVE	A2
WETLAUFER ST	A2
WILLIAM ST N	A2
WILLIAM ST S	A2
WILSON ST	A2
WOODSTOCK ST N	A2
WOODSTOCK ST S	A2
YOUNG ST	D3, D4, E2

ZONING BY-LAW No. 2003-18

- RESIDENTIAL TYPE 1 (R1 ; R1H)
 - RESIDENTIAL TYPE 2 (R2; R2(H))
 - RESIDENTIAL TYPE 3 (R3)
 - RESIDENTIAL EXISTING LOT (RE)
 - RURAL RESIDENTIAL (RR)
 - ESTATE RESIDENTIAL (ER)
 - CENTRAL COMMERCIAL (CC)
 - HIGHWAY COMMERCIAL (HC; HC(H))
 - AGGREGATE INDUSTRIAL ZONE (ME)
 - GENERAL INDUSTRIAL (MG)
 - RESTRICTED INDUSTRIAL (MR)
 - DEVELOPMENT (D)
 - INSTITUTIONAL (I)
 - OPEN SPACE (OS)
 - RECREATIONAL (REC; REC(H))
 - RESTRICTED AGRICULTURAL (A1)
 - GENERAL AGRICULTURAL (A2; A2H)
 - AGRICULTURAL BUSINESS (AB)
 - VILLAGE (V)
 - ENVIRONMENTAL PROTECTION 1 OVERLAY
See General Provisions 5.24.1
 - ENVIRONMENTAL PROTECTION 2 OVERLAY
See General Provisions 5.24.2
 - SOURCEWATER PROTECTION OVERLAY 1 (SP1)
See Section 5.28
 - SOURCEWATER PROTECTION OVERLAY 2 (SP2)
See Section 5.28
 - CONSERVATION AUTHORITY REGULATION LIMIT
See Section 2.8
- A, B, 2 SPECIAL ZONE PROVISIONS- REFER TO ZONING BY-LAW**



LAST UPDATE: FEBRUARY, 2025
DATA MAY BE SUBJECT TO LICENSE.

COPYRIGHT FOR INTELLECTUAL PROPERTY BELONGS WITH THE SOURCE AGENCY. OXFORD COUNTY MAKES THIS DATA AVAILABLE WITHOUT WARRANTY OF ANY KIND, EXPRESSED OR IMPLIED.

THIS DOCUMENT MAY NOT BE REPRODUCED WITHOUT WRITTEN PERMISSION. FOR MORE INFORMATION, PLEASE CONTACT COUNTY OF OXFORD INFORMATION SERVICES AT GIS@OXFORDCOUNTY.CA

THIS IS A COMPOSITE MAP OF KEY MAPS ATTACHED AS SCHEDULE "A" TO ZONING BY-LAW No. 2003-18 AS AMENDED.

FOR ACCURATE REFERENCE RECOUSE SHOULD BE HAD TO THE BY-LAW AND SUBSEQUENT AMENDMENTS.



Produced By The Department of Corporate Services
Information Services ©2025

