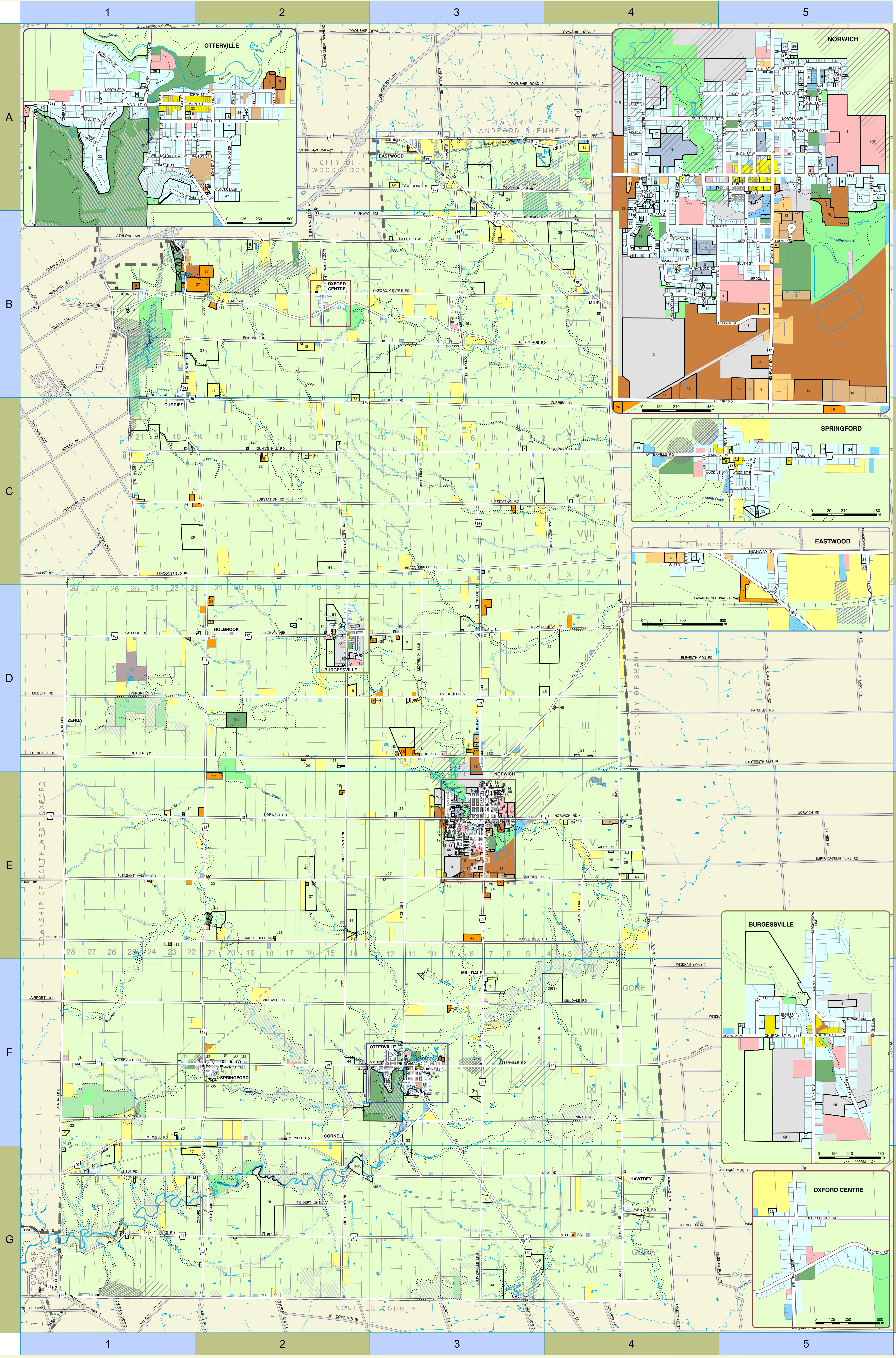


TOWNSHIP OF NORWICH ZONING BY-LAW No. 07-2003-Z



Norwich Township Road Index

AIRPORT RD	E2-E4	HORN RD	B1	PICK LINE	E3, F3
ALBERT ST	E3, F3	IRONWOOD CRT	E3	PINE ST	E3
AUGUST CRES	F3	IRVING DR	E3	PITCHER ST	E3
AVERY'S LANE	E3	JAMES ST	F2, F3	PLEASANT VALLEY RD	E1, E2
BAILEY ST	E3	JERDON ST	E3	POLLARD DR	E3
BASE LINE	D4-C4	JOHN ST	A3, E3	POLLARD ST	E3
BEACONSFIELD RD	C1, C2-C4	JOHN ST N	F3	POTTERS RD	G1-G4
BOND ST	F3	JOHN ST S	F3	QUAKER ST	D1-D4
BROCK ST E	E3	JONES LINE	E2	QUEEN ST	F3
BROCK ST W	E3	KITCHEN CRT	B1, C1	QUEEN ST W	F3
BUCHAN ST	F3	LOSSING DR	E3	RAYMOND RD	E3
BULLOCK ST	F3	MAIN ST	A3	RIVER OAKS DR	F3
BURGESS ST	D2	MAIN ST E	E3, F2, F3	ROBSON ST	E3
BUSHELL CRT	E3	MAIN ST N	E3	ROCK'S HILL LINE	G2
CALEY RD	E4	MAIN ST S	D2	SALFORD RD	D1, D2
CARMAN ST	E3	MAIN ST W	E3, F1-F3	SEVENTH RD	D4
CARROLL ST	E3	MALL RD	G1-G4	SEVENTH RD	F3
CAYLE ST	E3	MAPLE DELL RD	E1-E4	SIMCOE ST	G1
CECILIA ST	G4	MAPLE ST	G4	SLANT RD	D3, D4
CEDAR LINE	B1, C1	MARSHALL DR	E3	SMITH'S LANE	D2
CEDAR ST	F3	MARY ST	E3	SNYDER COURT	D2
CENTRE ST	E3	MCCREADY LINE	C3, D3	SON'S ST	F2
CHERRY ST	F3	MCKAG LANE	D2	SOUTH COURT ST E	E3
CHURCH ST	E3, F2, F3	MEADOWLANDS DR	F3	SOUTH COURT ST W	E3
CHURCH ST E	D2	MIDDLETOWN LINE	A2, B2-G2	SOUTH ST	E3
CHURCH ST W	D2	MILL ST E	F3	SPRING ST	E3
CLOVER LANE	F3	MILL ST W	F3	STOVER ST N	E3
CLYDE ST	E3	MILDALE RD	F1-F4	STOVER ST S	E3
COAL LINE	F3, G3	MOORE CRES	E3	SUBSTATION RD	C1-C4
COOK ST	E3	MUR LINE	A4-D4	SUBWAY LINE	A3
CORNELL RD	F1-F3, G1	NEIDERT LINE	G2	SUMMERVILLE LINE	G3
CORNWELL ST	E3	NELSON ST	G4	SUNNEW DR	D4
CSONT LINE	F3	NEW DURHAM RD	D3, D4	SUTTON ST	E3
CURRIES RD	B1, C1-C4	NEW RD	G1-G4	SWEABURG RD	B1, C1
DEER CRES	D2	NICHOL LANE	D2	SWIMMING POOL RD	G4
DELONG DR	E3	NINTH RD	F1-F4	THIRTEENTH CONCESSION RD	D4
DENNIS DR	F3	NORFOLK ST	F3	TIDEY ST	E3
DOVER ST	A1, F3	NORTH COURT ST E	E3	TOMPKINS CRT	E3
DUFFERIN ST	A1, E3	NORTH COURT ST W	E3, G1	TOWERLINE RD	A2, A3, A4
EAST ST	A3	NORTH ST	E3, F3, G1	UNION LINE	G1
ELEVENTH CONCESSION RD	D4	NORTH ST W	E3, F3	UTILITY LINE	D3
ELGIN ST	A1, E3	NORWICH RD	E1-E4	VAN PARYS DR	F3
ELGIN ST E	A5, E3	OATMAN LINE	F2	VANASH RD	F3
ELGIN ST W	A5, E3	ODDY RD	F3	VANDECAR LINE	B3, C3, C4
EVERGREEN ST	D1-D4	OLD 14 LINE	B3	VICTORIA ST	E3
FIREHALL RD	B1-B3	OLD HIGHWAY 2 RD	A3, A4	WASHINGTON ST	E3
FLORENCE ST	E3	OLD SCHOOL LINE	C1	WATER ST	F2
FRONT ST	E3	OLD STAGE RD	B1-B4	WELLINGTON ST E	F3
FURNACE RD	F3, G3	ORIEL LINE	C3	WELLINGTON ST W	F3
GARDEN CRT	E3	OTTER ST	E3	WENDY'S RD	G4
GEORGE ST	A1, E3	OTTER VIEW DR	F3	WEST ST N	F2
GREENLY LINE	B1	OTTERVILLE RD	F1-F4	WEST ST S	F2
GROVE ST	F3	OXFORD 13	D2-G2	WESTTOWN LINE	G1
HIGHWAY 2	C1-C4	OXFORD 14	A3-D3	WINDHAM LINE	E4, F4
HIGHWAY 403	E4	OXFORD CENTRE RD	B2-B4	WINDYWOOD LANE	E3
HIGHWAY 53	D4	OXFORD ST	F3	WOOD ST E	F2
HIGHWAY 59	E3	PALMER ST E	E3	WOOD ST W	F2
	A3, A4	PALMER ST W	E3	YORK ST	F3
	B3, B4	PATULLO AVE	B1-B4	ZENDA LINE	C1-G1
	A3, B3, B4	PAXTON ST	F3		
	B1, C1, C2, D2, D3-G3, G4	PHEBE ST	E3		

ZONING BY-LAW No. 07-2003-Z

- RESIDENTIAL TYPE 1 (R1; R1(H))
- RESIDENTIAL TYPE 2 (R2; R2(H))
- RESIDENTIAL TYPE 3 (R3)
- RESIDENTIAL EXISTING LOT (RE)
- RURAL RESIDENTIAL (RR)
- CENTRAL COMMERCIAL (CC)
- HIGHWAY COMMERCIAL (HC; HC(H))
- AGGREGATE INDUSTRIAL ZONE (ME)
- GENERAL INDUSTRIAL (MG)
- RESTRICTED INDUSTRIAL (MR)
- DEVELOPMENT (D)
- INSTITUTIONAL (I)
- OPEN SPACE (OS)
- RECREATIONAL (REC; REC(H))
- RESTRICTED AGRICULTURAL (A1)
- GENERAL AGRICULTURAL (A2; A2H)
- AGRICULTURAL BUSINESS (AB)
- VILLAGE (V)
- ENVIRONMENTAL PROTECTION 1 OVERLAY
See General Provisions 5.25.1
- ENVIRONMENTAL PROTECTION 2 OVERLAY
See General Provisions 5.25.2
- SOURCEWATER PROTECTION OVERLAY ZONE 1 (SP1)
See General Provisions 5.13.2
- SOURCEWATER PROTECTION OVERLAY ZONE 2 (SP2)
See General Provisions 5.13.2
- FLOODPLAIN AND FILL REGULATED AREA
See General Provisions 5.8
- REGULATORY FLOOD AND FILL LINES
- 30 METRE SETBACK
- A, B, 2 SPECIAL ZONE PROVISIONS- REFER TO ZONING BY-LAW

LAST UPDATE: FEBRUARY, 2025

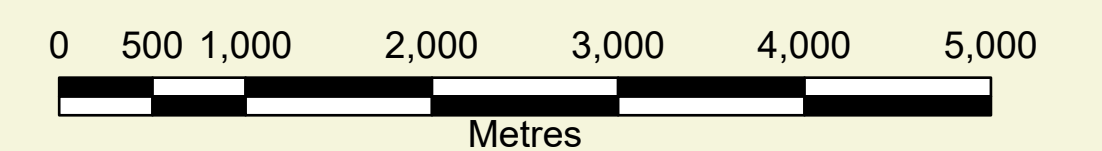
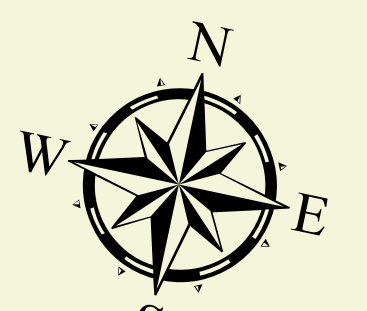
DATA MAY BE SUBJECT TO LICENSE.

COPYRIGHT FOR INTELLECTUAL PROPERTY BELONGS WITH THE SOURCE AGENCY, OXFORD COUNTY MAKES THIS DATA AVAILABLE WITHOUT WARRANTY OF ANY KIND, EXPRESSED OR IMPLIED.

THIS DOCUMENT MAY NOT BE REPRODUCED WITHOUT WRITTEN PERMISSION. FOR MORE INFORMATION, PLEASE CONTACT COUNTY OF OXFORD INFORMATION SERVICES AT GIS@OXFORDCOUNTY.CA

THIS IS A COMPOSITE MAP OF KEY MAPS ATTACHED AS SCHEDULE "A" TO ZONING BY-LAW No. 07-2003-Z AS AMENDED.

FOR ACCURATE REFERENCE RECURSE SHOULD BE HAD TO THE BY-LAW AND SUBSEQUENT AMENDMENTS.



OxfordCounty
Growing stronger together
Produced By The Department of Corporate Services
Information Services ©2025