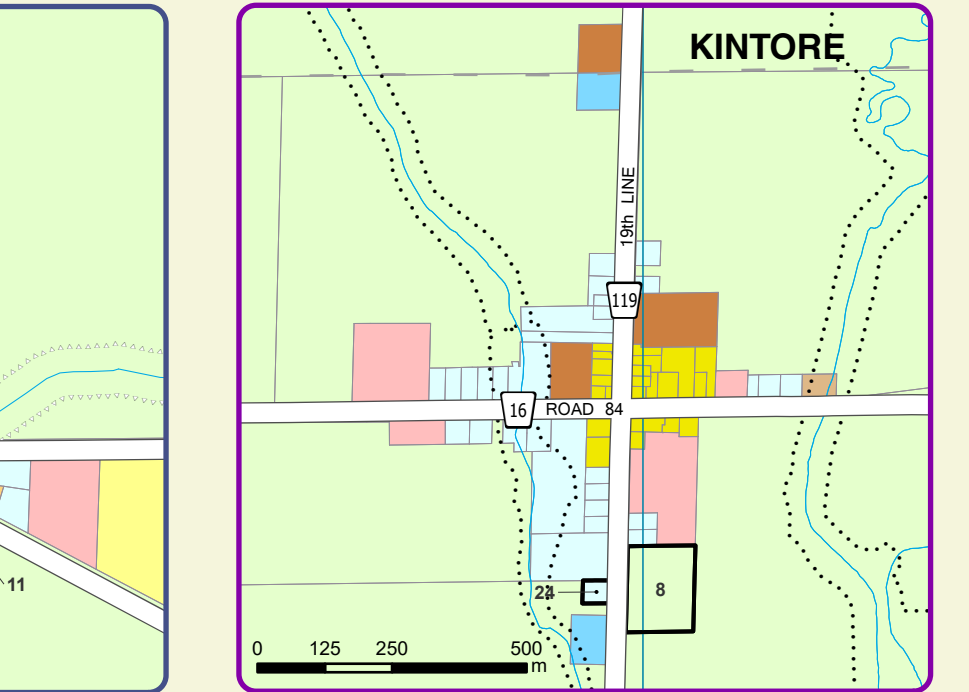
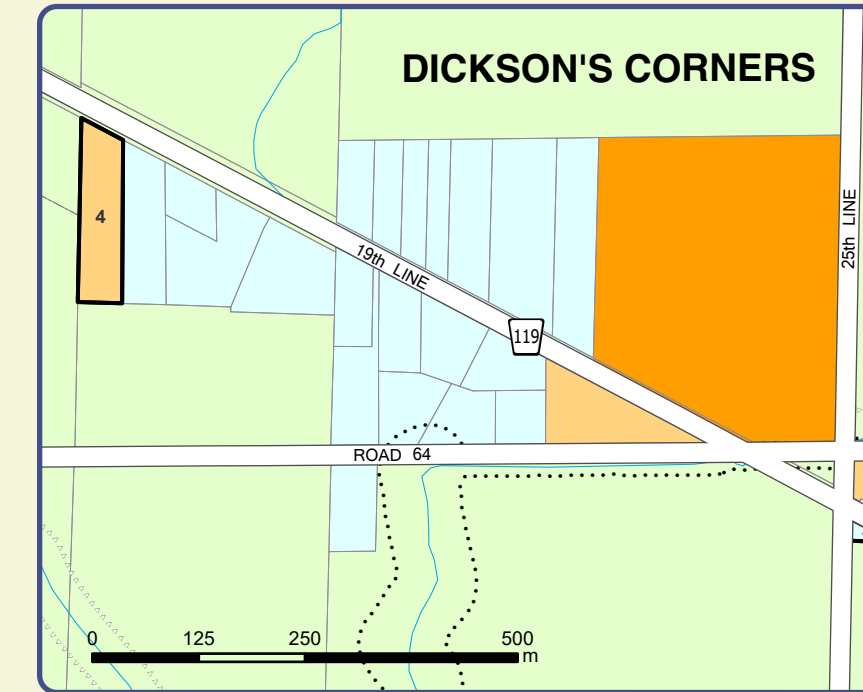
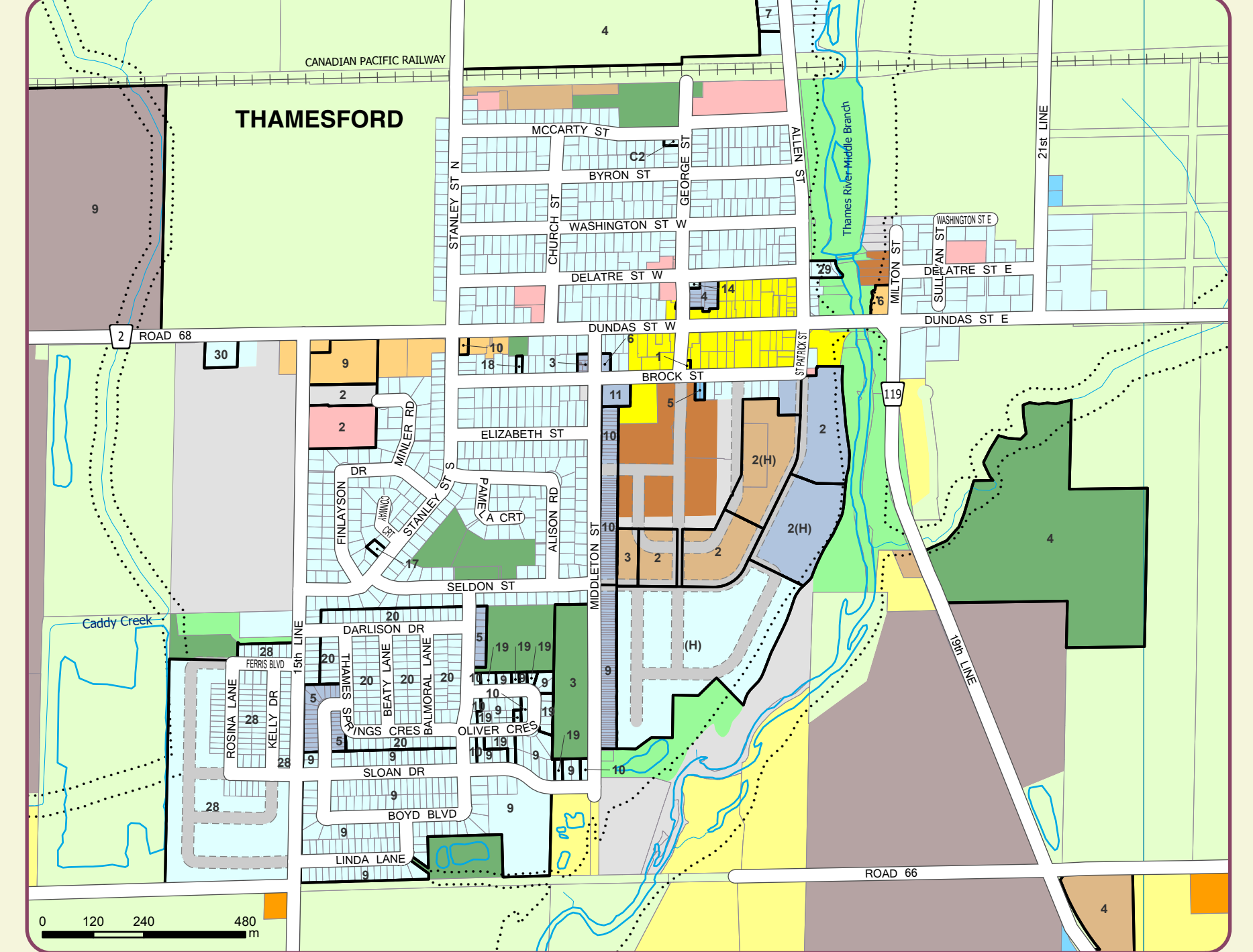
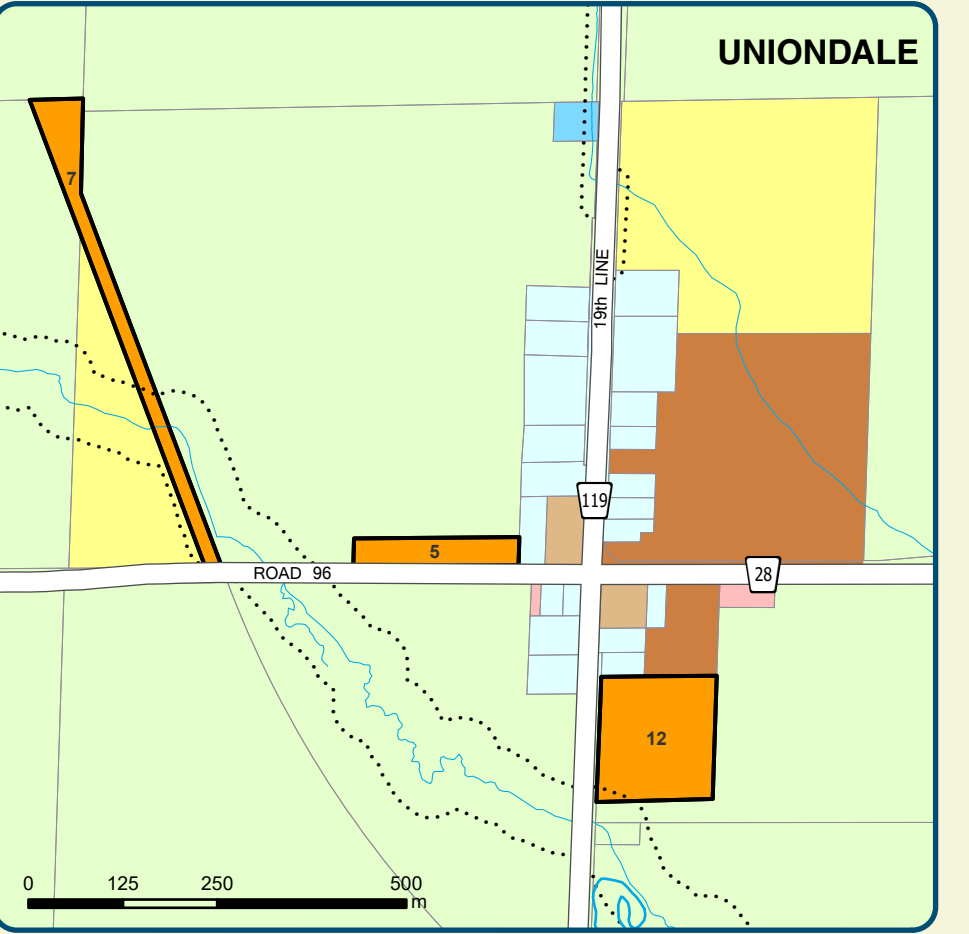
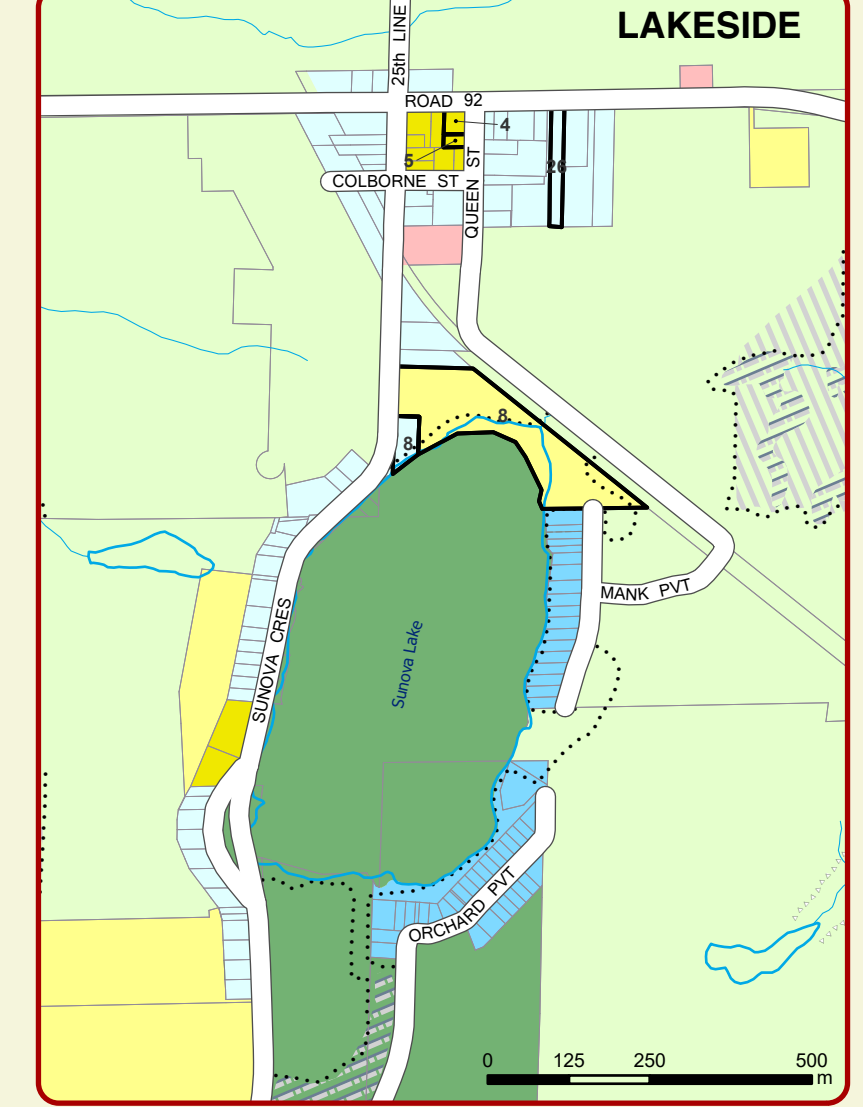
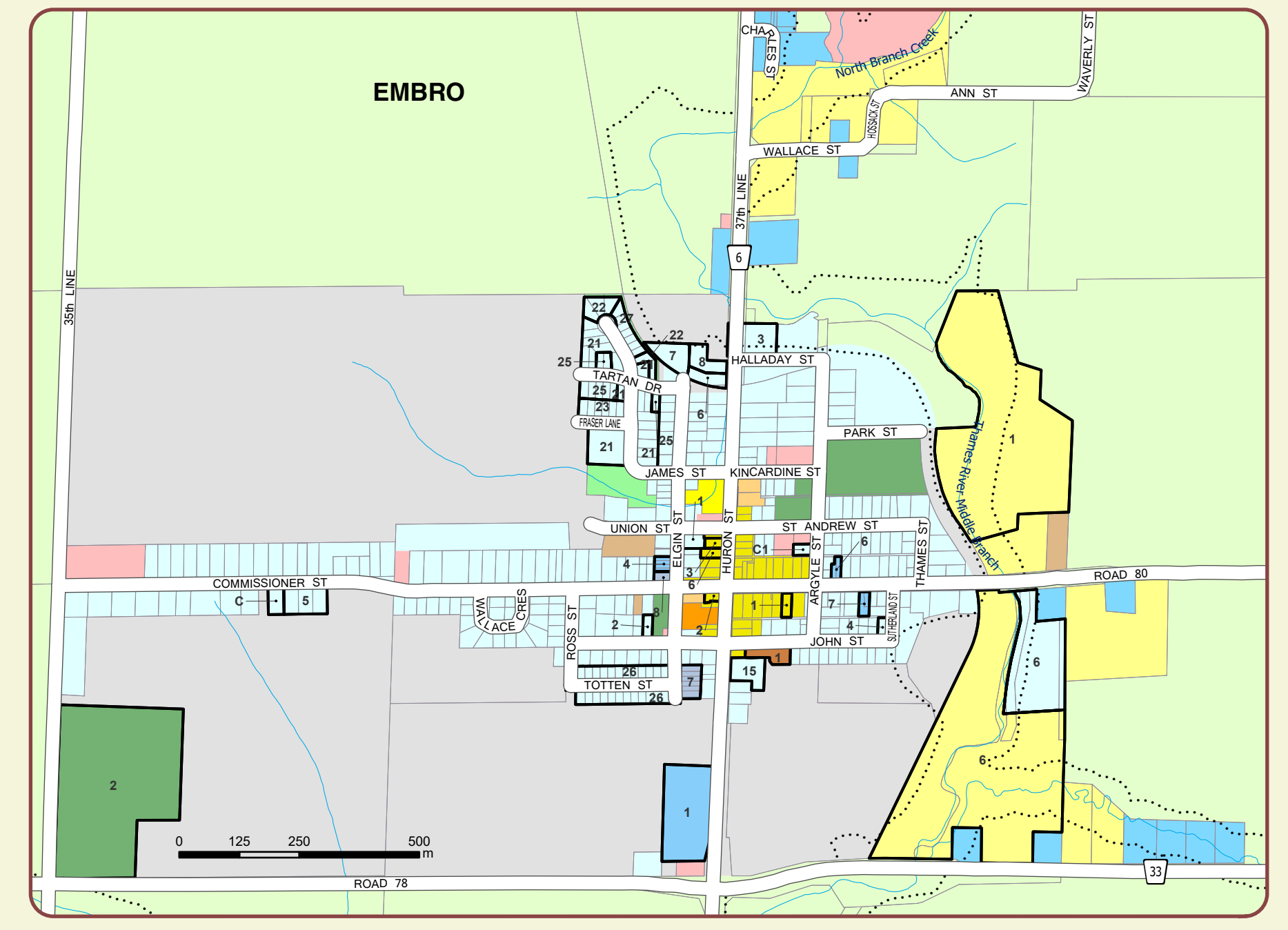
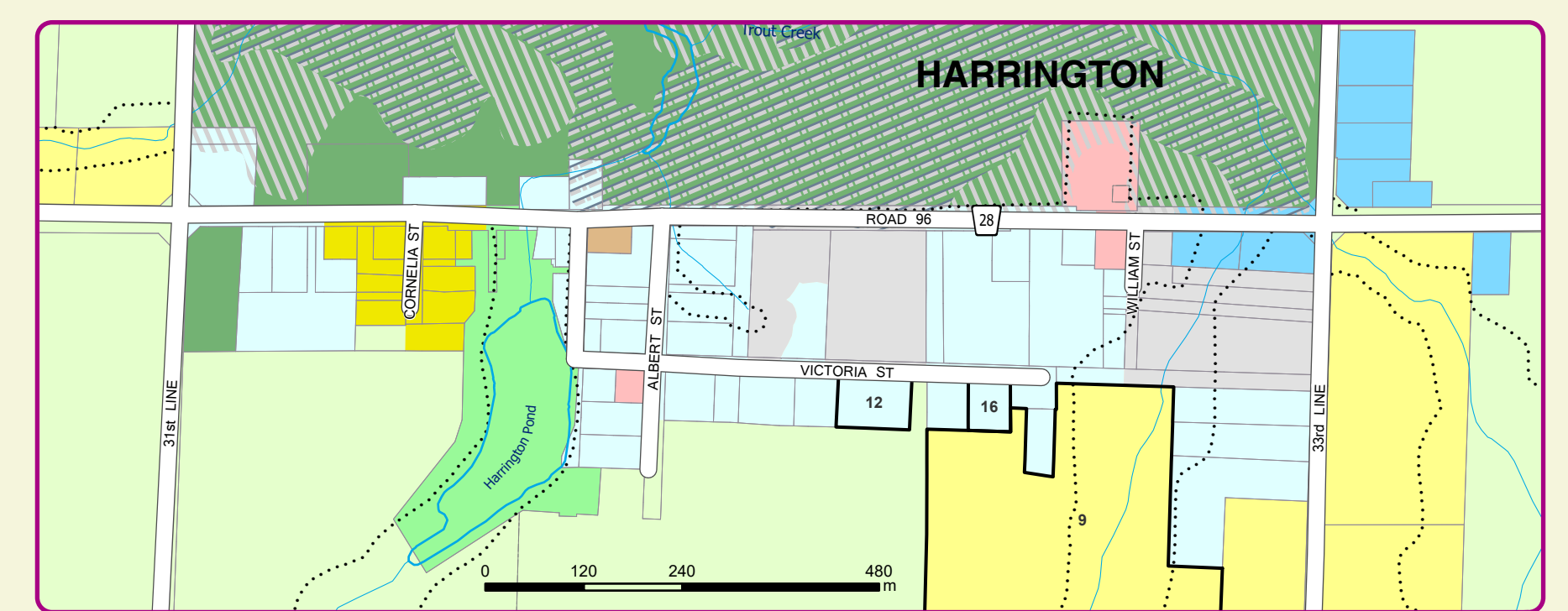
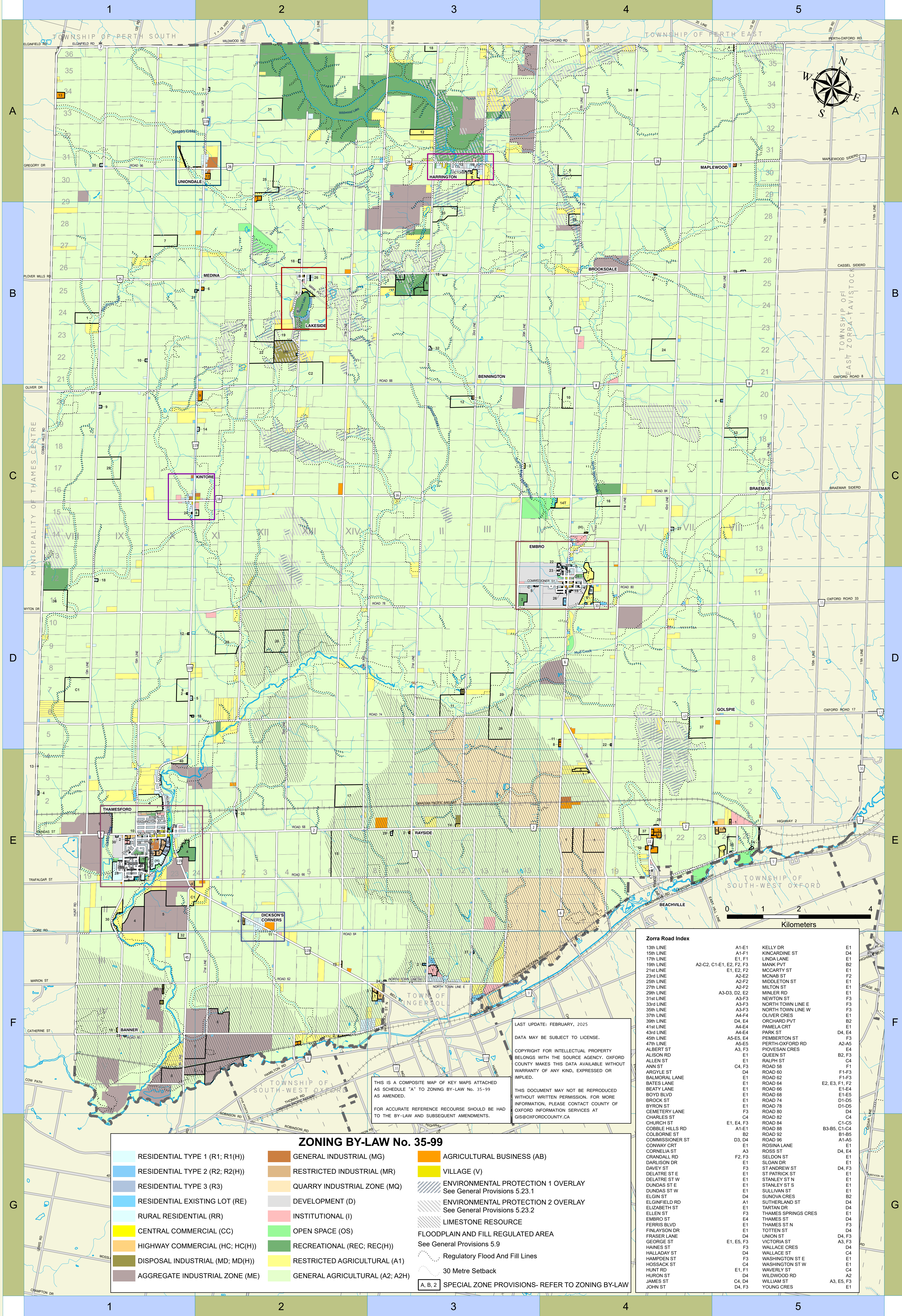


# TOWNSHIP OF ZORRA ZONING BY-LAW No. 35-99



**Zorra Road Index**

13th LINE	A1-E1	KELLY DR	E1
15th LINE	A1-F1	KINGARDINE ST	D4
17th LINE	E1-F1	LINDA LANE	E1
19th LINE	A2-C2, C1-E1, E2, F2, F3	MANK PVT	B2
21st LINE	E1, E2, F2	MCCARTY ST	E1
23rd LINE	A2-E2	MICHAEL ST	F2
25th LINE	A2-F2	MIDDLETON ST	E1
27th LINE	A2-F2	MILTON ST	E1
29th LINE	A2-F2	MINNER RD	E1
31st LINE	A3-F3	NEWTOWN ST	F3
33rd LINE	A3-F3	NORTH TOWN LINE E	F3
35th LINE	A3-F3	NORTH TOWN LINE W	F3
37th LINE	A4-F4	OLIVER CRES	E1
39th LINE	D4, E4	ORCHARD PVT	B2
41st LINE	A4-E4	PAMELA CRT	E1
43rd LINE	A4-E4	PARK ST	D4, E4
45th LINE	A5-E5, E4	PEMBERTON ST	F3
47th LINE	A5-E5	PERTH OXFORD RD	A2-A5
ALBERT ST	A3, F3	PIOVESAN CRES	E4
ALISON RD	E1	QUEEN ST	B2, F3
ALLEN ST	E1	RALPH ST	C4
ANN ST	C4, F3	ROAD 58	F1
ARGYLE ST	D4	ROAD 60	F1-F3
BALMORAL LANE	E1	ROAD 62	F1-F3
BATES LANE	E1	ROAD 64	E2, E3, F1, F2
BEATY LANE	E1	ROAD 66	E1-E4
BOYD BLVD	E1	ROAD 68	E1-E5
BROCK ST	E1	ROAD 74	D1-D5
BYRON ST	E1	ROAD 76	D1-D5
CEMETERY LANE	F3	ROAD 80	F3
CHARLES ST	C4	ROAD 82	C4
CHURCH ST	E1, E4, F3	ROAD 84	C1-C5
COBBLE HILLS RD	A1-E1	ROAD 86	B3-B5, C1-C4
COLBORNE ST	B2	ROAD 88	B1-B5
COMMISSIONER ST	D3, D4	ROAD 90	A1-A5
CONWAY CRT	E1	ROSKIN LANE	E1
CORNELIA ST	A3	ROSS ST	D4, E4
CRANDALL RD	F2, F3	SELDON ST	E1
DARLSON DR	E1	SILVAN DR	E1
DAVEY ST	F3	ST ANDREW ST	D4, F3
DELAITE ST E	E1	ST PATRICK ST	E1
DELAITE ST W	E1	STANLEY ST N	E1
DUNDAS ST E	E1	STANLEY ST S	E1
DUNDAS ST W	E1	SULLIVAN ST	E1
ELGIN ST	D4	SUNOVA CRES	B2
ELGINFIELD RD	A1	SUTHERLAND ST	D4
ELIZABETH ST	E1	TARTAN DR	D4
ELLEN ST	F3	THAMES SPRINGS CRES	E1
EMBRO ST	E4	THAMES ST	D4
FERRIS BLVD	E1	THAMES ST N	F3
FINLAYSON DR	E1	TOTTEN ST	D4
FRASER LANE	D4	UNION ST	D4, F3
GEORGE ST	E1, E5, F3	VICTORIA ST	A3, F3
HAINES ST	F3	WALLACE CRES	D4
HALLADAY ST	D4	WALLACE ST	C4
HAMPTON ST	F3	WASHINGTON ST E	E1
HOSSACK ST	C4	WASHINGTON ST W	E1
HUNT RD	E1, F1	WATERLY ST	C4
HURON ST	D4	WILLOWOOD RD	A2
JAMES ST	C4, D4	WILLIAM ST	A3, E5, F3
JOHN ST	D4, F3	YOUNG CRES	E1

**ZONING BY-LAW No. 35-99**

RESIDENTIAL TYPE 1 (R1; R1(H))	GENERAL INDUSTRIAL (MG)	AGRICULTURAL BUSINESS (AB)
RESIDENTIAL TYPE 2 (R2; R2(H))	RESTRICTED INDUSTRIAL (MR)	VILLAGE (V)
RESIDENTIAL TYPE 3 (R3)	QUARRY INDUSTRIAL ZONE (MQ)	ENVIRONMENTAL PROTECTION 1 OVERLAY See General Provisions 5.23.1
RESIDENTIAL EXISTING LOT (RE)	DEVELOPMENT (D)	ENVIRONMENTAL PROTECTION 2 OVERLAY See General Provisions 5.23.2
RURAL RESIDENTIAL (RR)	INSTITUTIONAL (I)	LIMESTONE RESOURCE
CENTRAL COMMERCIAL (CC)	OPEN SPACE (OS)	FLOODPLAIN AND FILL REGULATED AREA See General Provisions 5.9
HIGHWAY COMMERCIAL (HC; HC(H))	RECREATIONAL (REC; REC(H))	Regulatory Flood And Fill Lines
DISPOSAL INDUSTRIAL (MD; MD(H))	RESTRICTED AGRICULTURAL (A1)	30 Metre Setback
AGGREGATE INDUSTRIAL ZONE (ME)	GENERAL AGRICULTURAL (A2; A2H)	<b>A. B. 2 SPECIAL ZONE PROVISIONS- REFER TO ZONING BY-LAW</b>