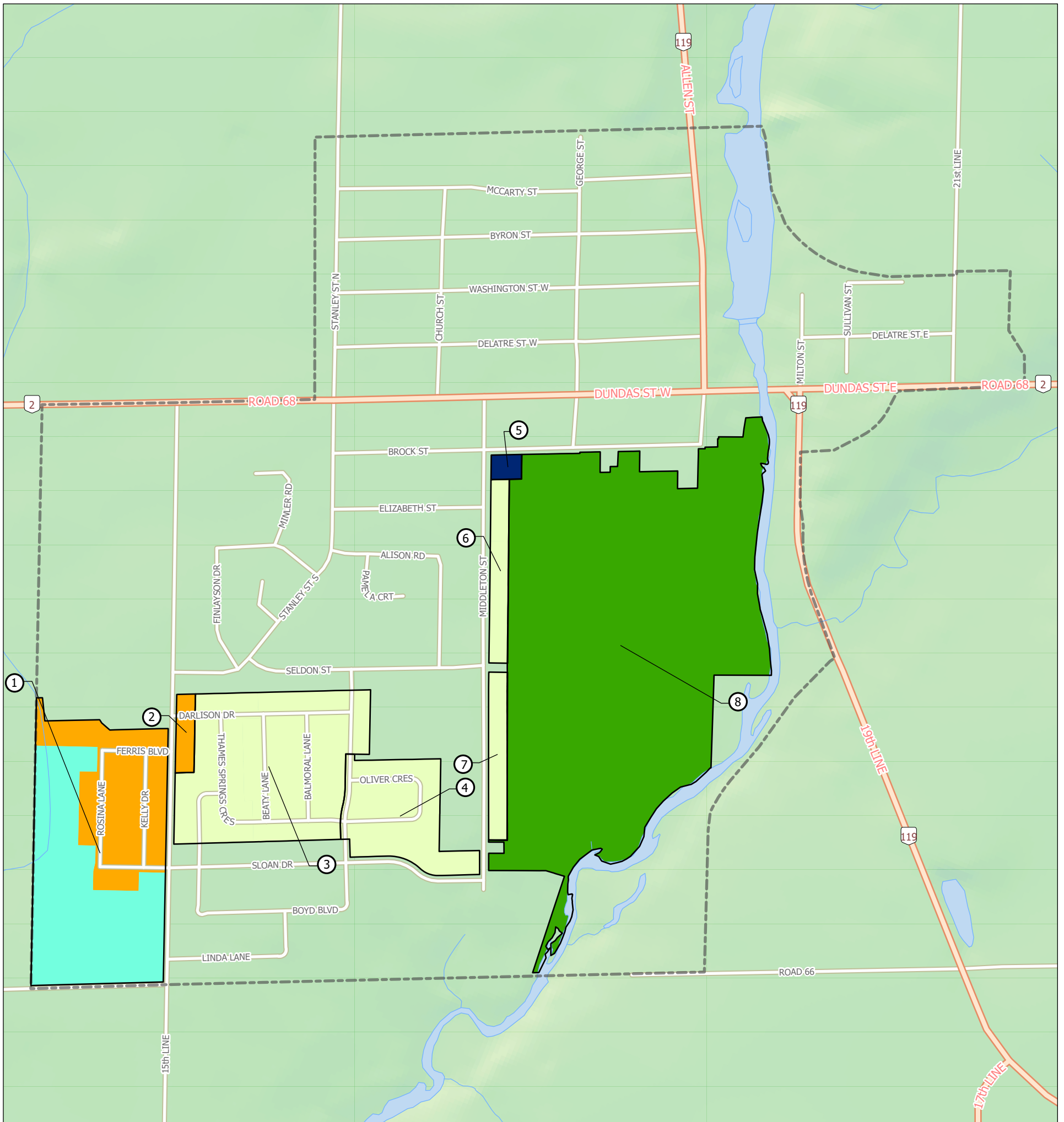
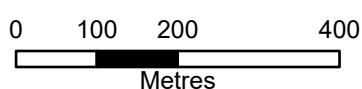
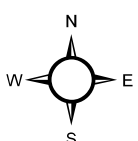


Development Activity - Village of Thamesford



- Residential Development**
- Draft Approved Plan
 - Circulated or Submitted Plan
 - Built or Nearly Built Plan
 - Approved Site Plan
 - Built Out Plan

Map #	File Number	Name	Total Units
1	SB18-09-5	Mimadala Holdings Inc.	199
2	SB10-04-5	Loy-EI Sloan Development Inc.	9
3	SB12-07-05	TOIL Development Inc. "Thames Springs"	152
4	32T-05002, 32T-99002	TOIL Development Inc. "Thames Springs" (Phase 4)	55
5	SB24-01-5/SP5-22-01	Hogg	10
6	SB21-08-5	Kingwood Riverside Towns Ltd. Ph. 1B	56
7	SP5-21-01	Kingwood Riverside Towns Ltd. Ph. 1A	61
8	SB22-10-5	Kingwood Riverside Developments Ltd.	1247



LAST UPDATE: July, 2024

Note: These maps are not intended to show all development. Only larger residential and industrial subdivisions/site plan applications are depicted.