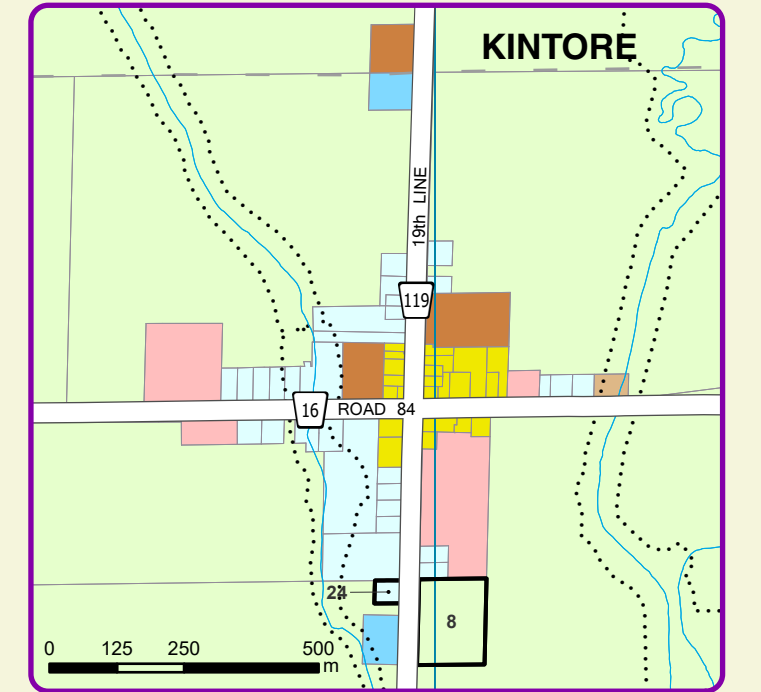
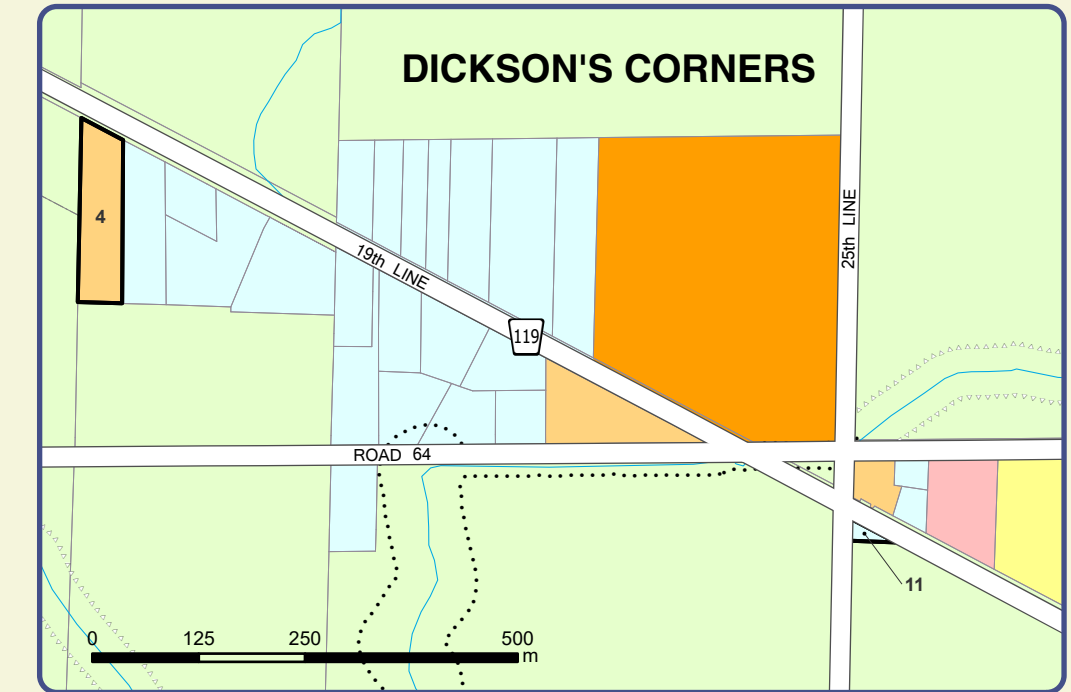
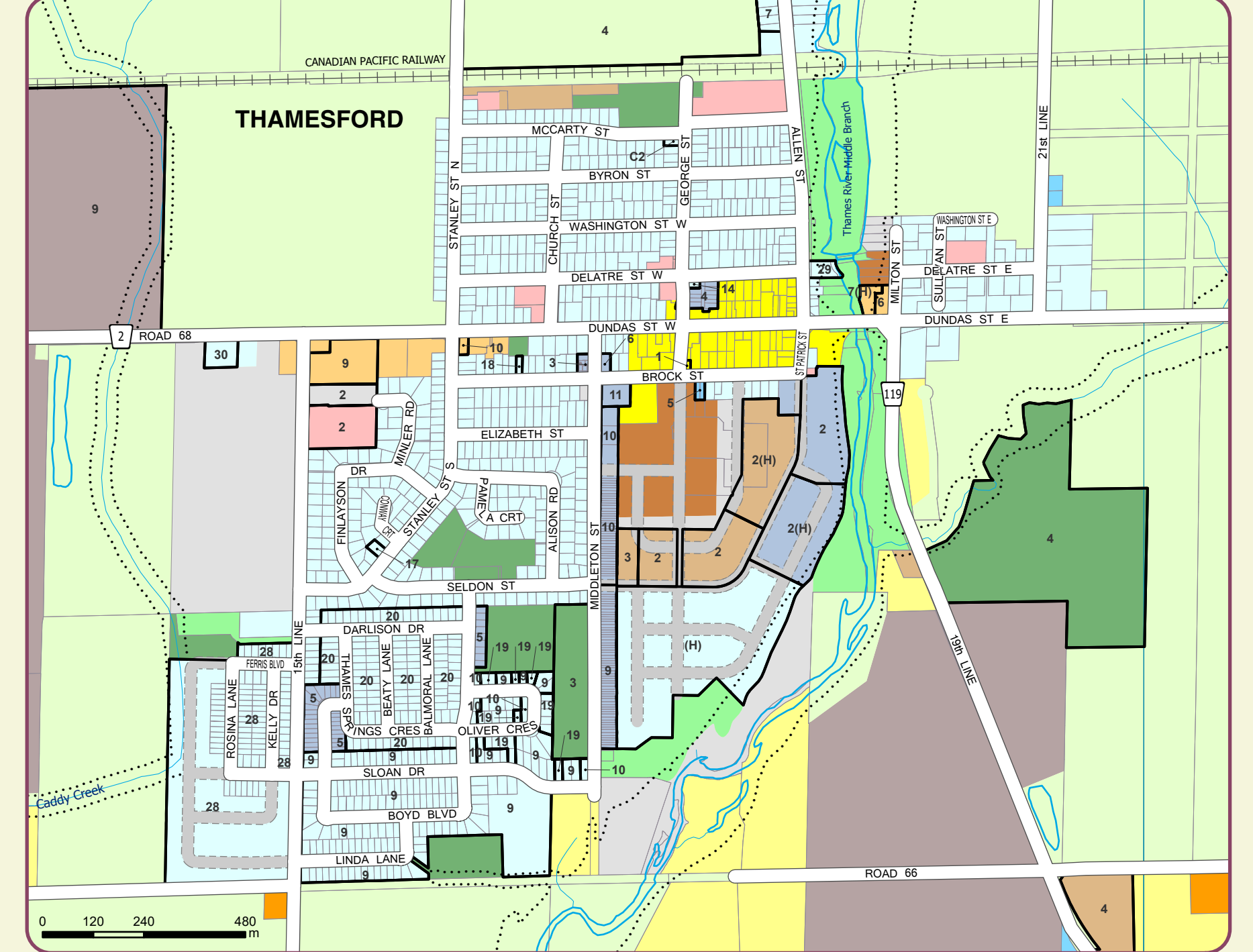
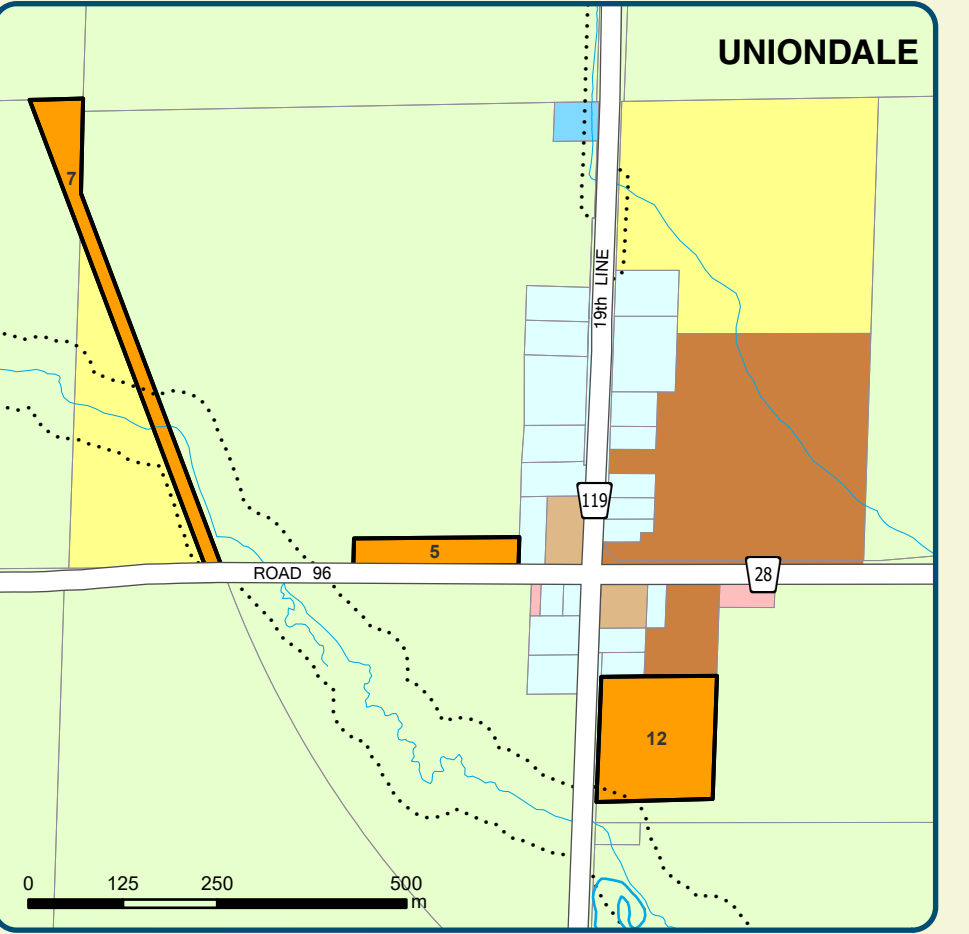
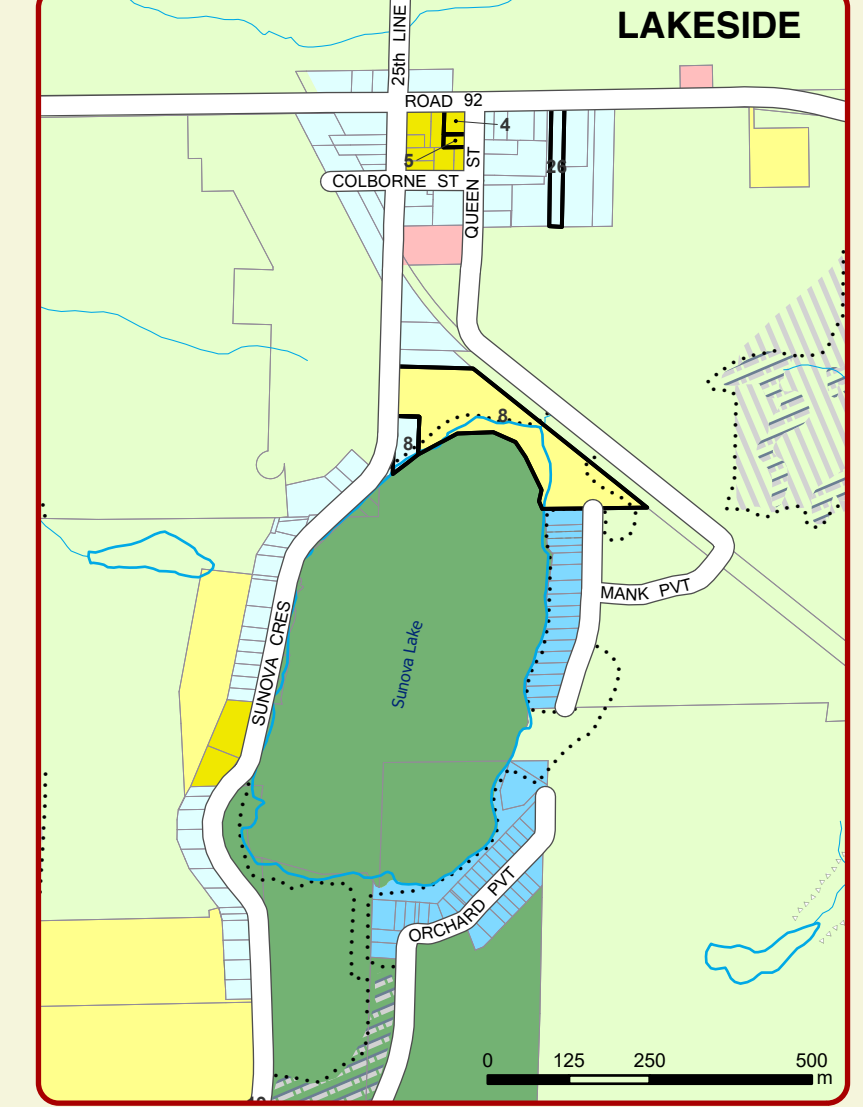
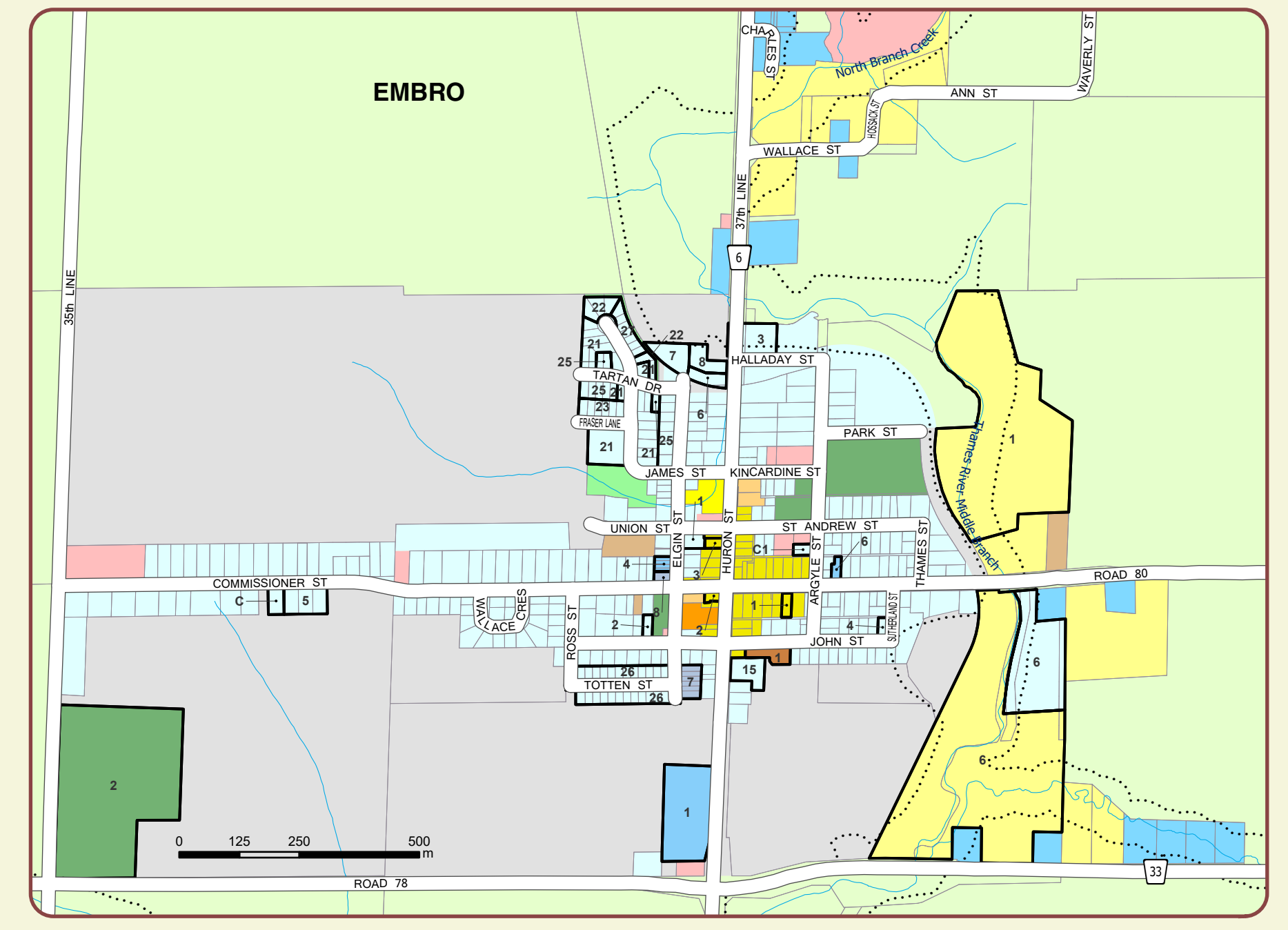
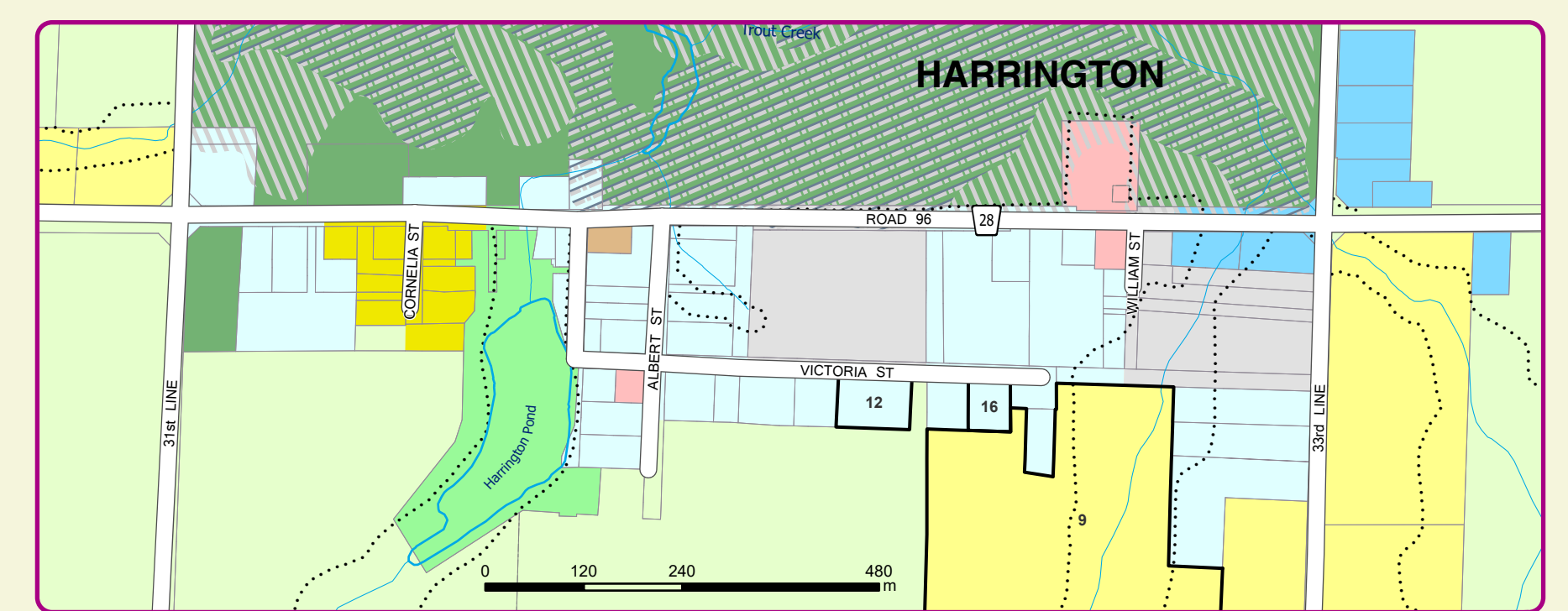
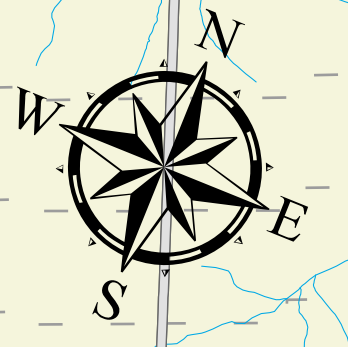
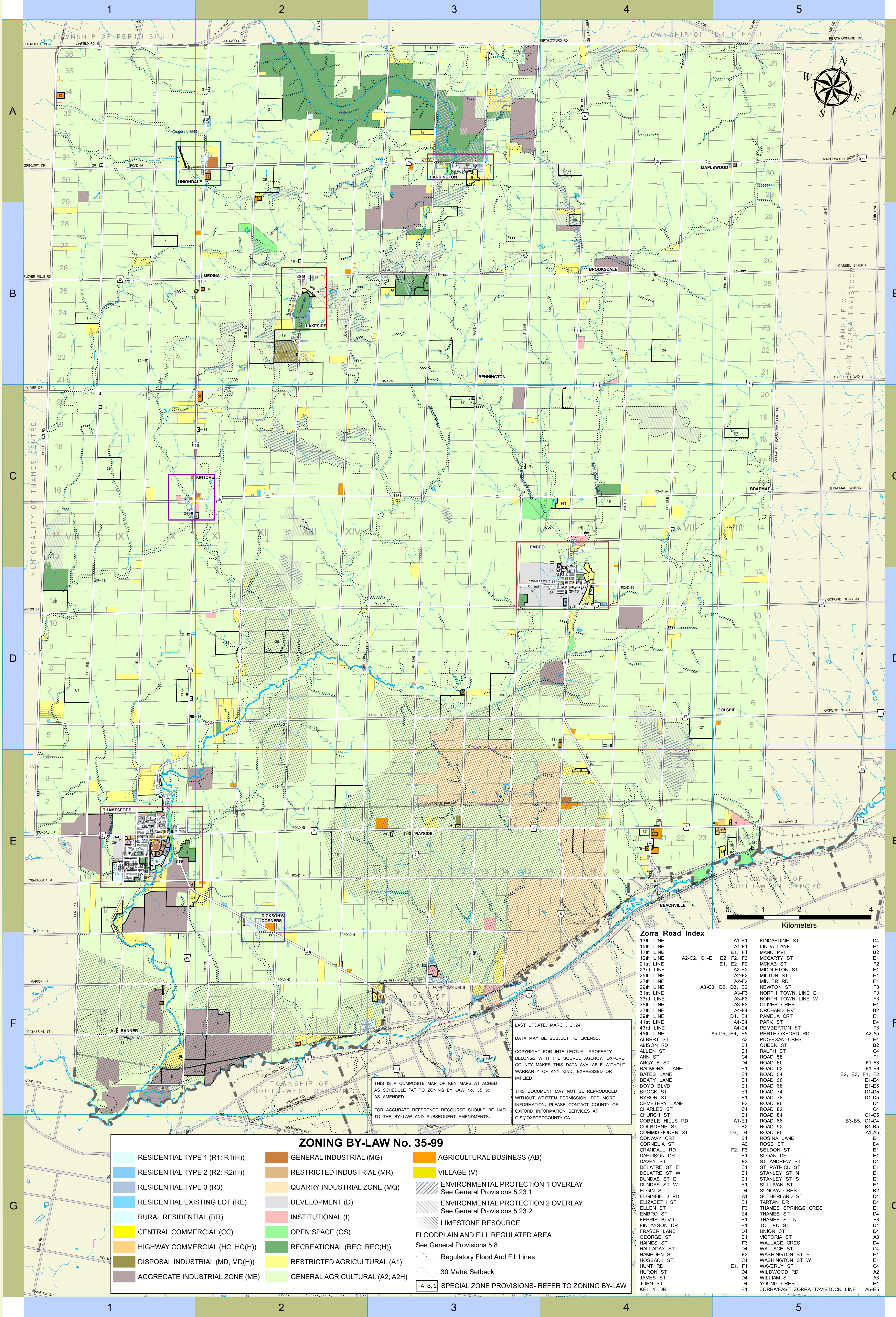


TOWNSHIP OF ZORRA ZONING BY-LAW No. 35-99



Zorra Road Index

13th LINE	A1-E1	KINCARDINE ST	D4
15th LINE	A1-F1	LINDA LANE	B2
17th LINE	E1, F1	MARK PVT	E1
19th LINE	E2, F2, F3	MCCARTY ST	F1
21st LINE	E1, E2, F2	MENAB ST	F2
23rd LINE	A2-E2	MIDDLETON ST	F3
25th LINE	A2-F2	MILTON ST	F1
27th LINE	A2-F2	MINLER RD	F3
29th LINE	A3-C3, D3, E2	NEWTON ST	F3
31st LINE	A3-F3	NORTH TOWN LINE E	F3
33rd LINE	A3-F3	NORTH TOWN LINE W	F3
35th LINE	A3-F3	OLIVER CRES	F1
37th LINE	A4-F4	ORCHARD PVT	B2
39th LINE	D4, E4	PAMELA CRT	D1
41st LINE	A4-E4	PARK ST	E1
43rd LINE	A4-E4	PERMERTON ST	F3
45th LINE	A5-D5, E4, E5	PERTH-OXFORD RD	A2-A5
ALBERT ST	A3	POVESAN CRES	E4
ALISON RD	E1	QUEEN ST	B2
ANN ST	C4	RALPH ST	C1
ARDYLE ST	D4	ROAD 58	F1-F3
BALMORAL LANE	E1	ROAD 62	F1-F3
BATES LANE	E1	ROAD 64	F1-F3
BEATY LANE	E1	ROAD 66	F1-F3
BOYD BLVD	E1	ROAD 68	E1-E5
BROCK ST	E1	ROAD 74	D1-D5
BYRON ST	E1	ROAD 76	D1-D5
CEMETERY LANE	F3	ROAD 80	D4
CHARLES ST	C4	ROAD 82	C4
CHURCH ST	E1	ROAD 84	C1-C5
COBBLE HILLS RD	A1-E1	ROAD 86	C1-C5
COLBORNE ST	B2	ROAD 92	B1-B5
COMMISSIONER ST	D3, D4	ROAD 96	A1-A5
CONWAY CRT	E1	ROSWA LANE	E1
CORNELIA ST	A3	ROSS ST	D4
GRANDALL RD	F2, F3	SELDON ST	E1
GARLSON DR	E1	SLOAN ST	D4
DAVEY ST	F3	ST ANDREW ST	E1
DELATRE ST E	E1	ST PATRICK ST	E1
DELATRE ST W	E1	STANLEY ST N	E1
DUNDAS ST E	E1	STANLEY ST S	E1
DUNDAS ST W	E1	SULLIVAN ST	E1
ELGIN ST	D4	SUNOVA CRES	B2
ELGINFIELD RD	A1	SUTHERLAND ST	D4
ELIZABETH ST	E1	TARTAN DR	D4
ELLEN ST	F3	THAMES SPRINGS CRES	E1
EMBR0 ST	E4	THAMES ST	D4
FERRIS BLVD	E1	THAMES ST N	F3
FIRLAYSON DR	E1	TOTTEN ST	D4
FRASER LANE	D4	UNION ST	D4
GEORGE ST	E1	VICTORIA ST	A3
HAINES ST	F3	WALLACE CRES	D4
HALLADAY ST	D4	WALLACE ST	C4
HAMPDEN ST	F3	WASHINGTON ST E	E1
HOSKOCK ST	C4	WASHINGTON ST W	E1
HUNT RD	E1, F1	WAVERLY ST	C4
HURON ST	D4	WILWOOD RD	A2
JAMES ST	D4	WILLIAM ST	A3
JOHN ST	D4	YOUNG CRES	E1
KELLY DR	E1	ZORRA/EAST ZORRA TAVISTOCK LINE	A5-E5

LAST UPDATE: MARCH, 2024
DATA MAY BE SUBJECT TO LICENSE.
COPYRIGHT FOR INTELLECTUAL PROPERTY BELONGS WITH THE SOURCE AGENCY. OXFORD COUNTY MAKES THIS DATA AVAILABLE WITHOUT WARRANTY OF ANY KIND, EXPRESSED OR IMPLIED.
THIS DOCUMENT MAY NOT BE REPRODUCED WITHOUT WRITTEN PERMISSION. FOR MORE INFORMATION, PLEASE CONTACT COUNTY OF OXFORD INFORMATION SERVICES AT GIS@OXFORDCOUNTY.CA

ZONING BY-LAW No. 35-99

RESIDENTIAL TYPE 1 (R1; R1(H))	GENERAL INDUSTRIAL (MG)	AGRICULTURAL BUSINESS (AB)
RESIDENTIAL TYPE 2 (R2; R2(H))	RESTRICTED INDUSTRIAL (MR)	VILLAGE (V)
RESIDENTIAL TYPE 3 (R3)	QUARRY INDUSTRIAL ZONE (MQ)	ENVIRONMENTAL PROTECTION 1 OVERLAY See General Provisions 5.23.1
RESIDENTIAL EXISTING LOT (RE)	DEVELOPMENT (D)	ENVIRONMENTAL PROTECTION 2 OVERLAY See General Provisions 5.23.2
RURAL RESIDENTIAL (RR)	INSTITUTIONAL (I)	LIMESTONE RESOURCE
CENTRAL COMMERCIAL (CC)	OPEN SPACE (OS)	FLOODPLAIN AND FILL REGULATED AREA See General Provisions 5.8
HIGHWAY COMMERCIAL (HC; HC(H))	RECREATIONAL (REC; REC(H))	Regulatory Flood And Fill Lines
DISPOSAL INDUSTRIAL (MD; MD(H))	RESTRICTED AGRICULTURAL (A1)	30 Metre Setback
AGGREGATE INDUSTRIAL ZONE (ME)	GENERAL AGRICULTURAL (A2; A2H)	A. B. 2 SPECIAL ZONE PROVISIONS- REFER TO ZONING BY-LAW