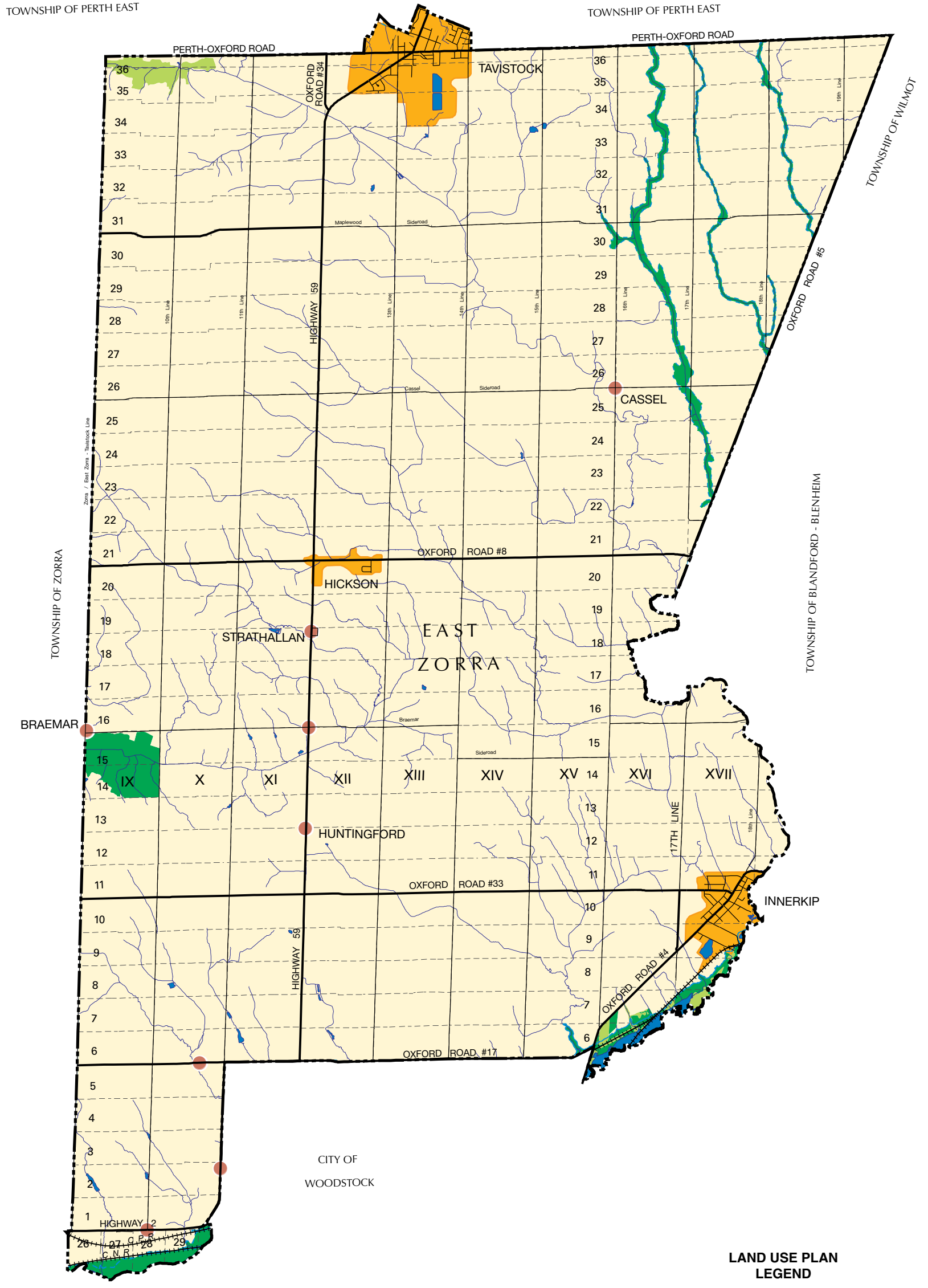


SCHEDULE "E-1"
TOWNSHIP OF EAST ZORRA-TAVISTOCK
LAND USE PLAN

COUNTY OF OXFORD
OFFICIAL PLAN



NOTES: THIS MAP MAY INCORPORATE DATA UNDER LICENCE AGREEMENT(S) WITH THE UPPER THAMES RIVER CONSERVATION AUTHORITY, THE GRAND RIVER CONSERVATION AUTHORITY, THE LONG POINT REGION CONSERVATION AUTHORITY, THE MINISTRY OF NORTHERN DEVELOPMENT AND MINES, THE MINISTRY OF NATURAL RESOURCES AND THE QUEEN'S PRINTER OF ONTARIO. ©2012

COUNTY COUNCIL APPROVAL: APRIL 25 2012



THIS SCHEDULE FORMS A PART OF THE COUNTY OF OXFORD OFFICIAL PLAN AND MUST BE READ IN CONJUNCTION WITH THE WRITTEN TEXT.

THIS IS AN OFFICE CONSOLIDATION PREPARED FOR CONVENIENCE ONLY. FOR ACCURATE REFERENCE RECOURSE SHOULD BE HAD TO THE ORIGINAL DOCUMENT AND AMENDMENTS HERETO.

BASE MAP LEGEND

- MUNICIPAL BOUNDARY
- MAJOR ROADS
- OTHER ROADS
- RAILWAY
- WATERCOURSE
- LOT LINES

LAND USE PLAN LEGEND

- AGRICULTURAL RESERVE
- SETTLEMENT
- OPEN SPACE
- ENVIRONMENTAL PROTECTION
- RURAL CLUSTERS
- FLOODLINE