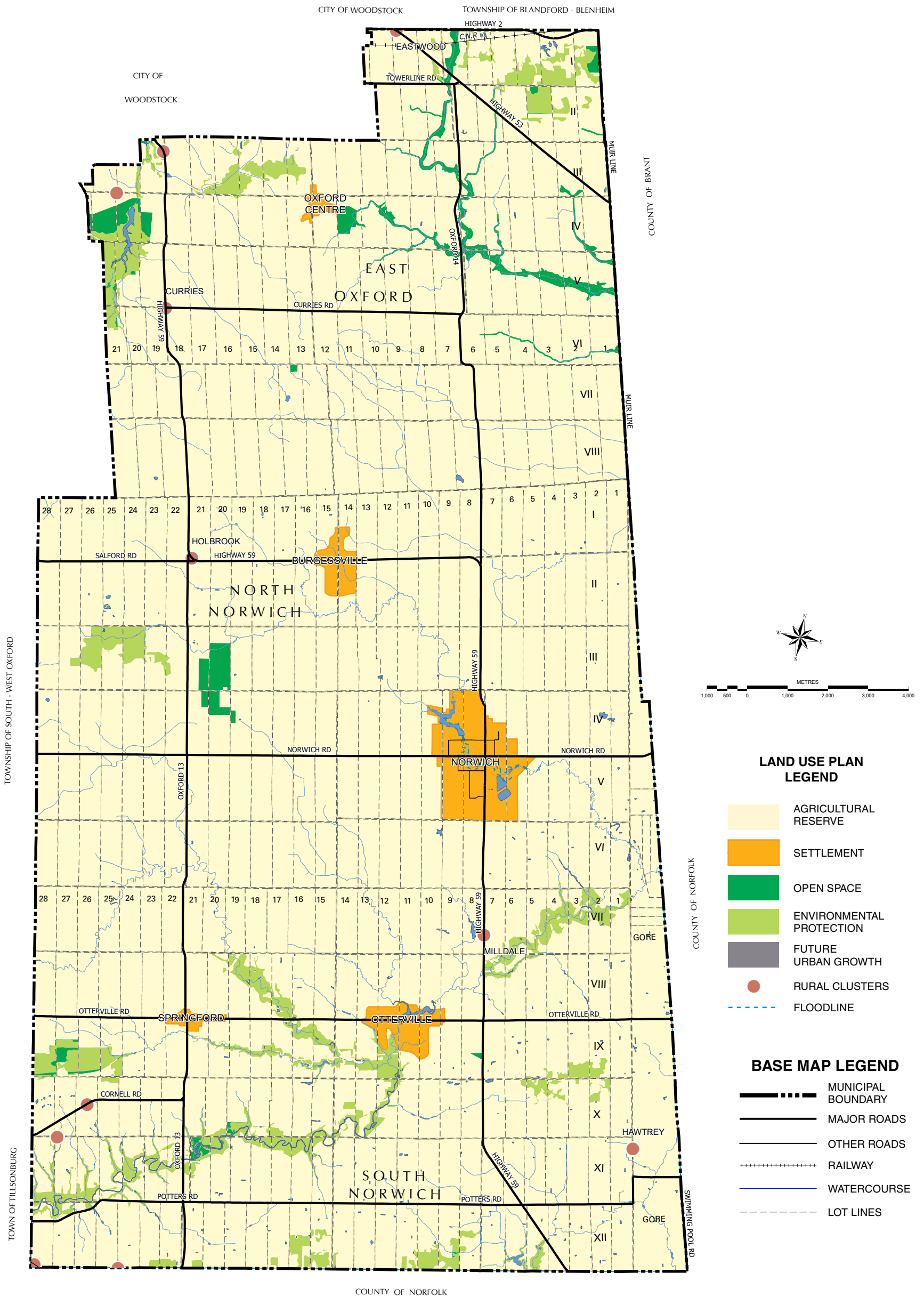


SCHEDULE "N-1"
TOWNSHIP OF NORWICH
LAND USE PLAN

COUNTY OF OXFORD
OFFICIAL PLAN



LAND USE PLAN LEGEND

- AGRICULTURAL RESERVE
- SETTLEMENT
- OPEN SPACE
- ENVIRONMENTAL PROTECTION
- FUTURE URBAN GROWTH
- RURAL CLUSTERS
- FLOODLINE

BASE MAP LEGEND

- MUNICIPAL BOUNDARY
- MAJOR ROADS
- OTHER ROADS
- RAILWAY
- WATERCOURSE
- LOT LINES

COUNTY COUNCIL APPROVAL:
 SEPTEMBER 8, 2021

NOTES: THIS MAP MAY INCORPORATE DATA UNDER LICENCE AGREEMENT(S) WITH THE UPPER THAMES RIVER CONSERVATION AUTHORITY, THE GRAND RIVER CONSERVATION AUTHORITY, THE LONG POINT REGION CONSERVATION AUTHORITY, THE MINISTRY OF ENERGY, NORTHERN DEVELOPMENT AND MINES, THE MINISTRY OF NATURAL RESOURCES AND FORESTRY AND THE QUEEN'S PRINTER OF ONTARIO. ©2021

THIS SCHEDULE FORMS A PART OF THE COUNTY OF OXFORD OFFICIAL PLAN AND MUST BE READ IN CONJUNCTION WITH THE WRITTEN TEXT.

THIS IS AN OFFICE CONSOLIDATION PREPARED FOR CONVENIENCE ONLY. FOR ACCURATE REFERENCE RECOURSE SHOULD BE HAD TO THE ORIGINAL DOCUMENT AND AMENDMENTS HERETO.