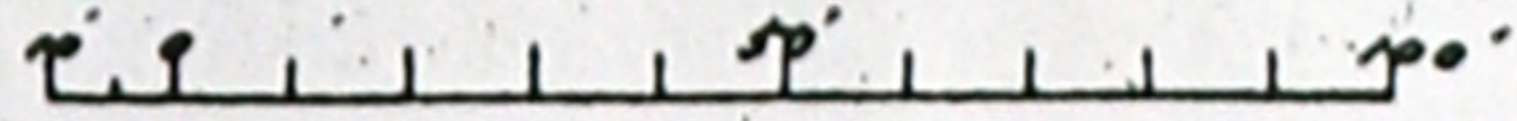


INGERSOLL-

ONTARIO

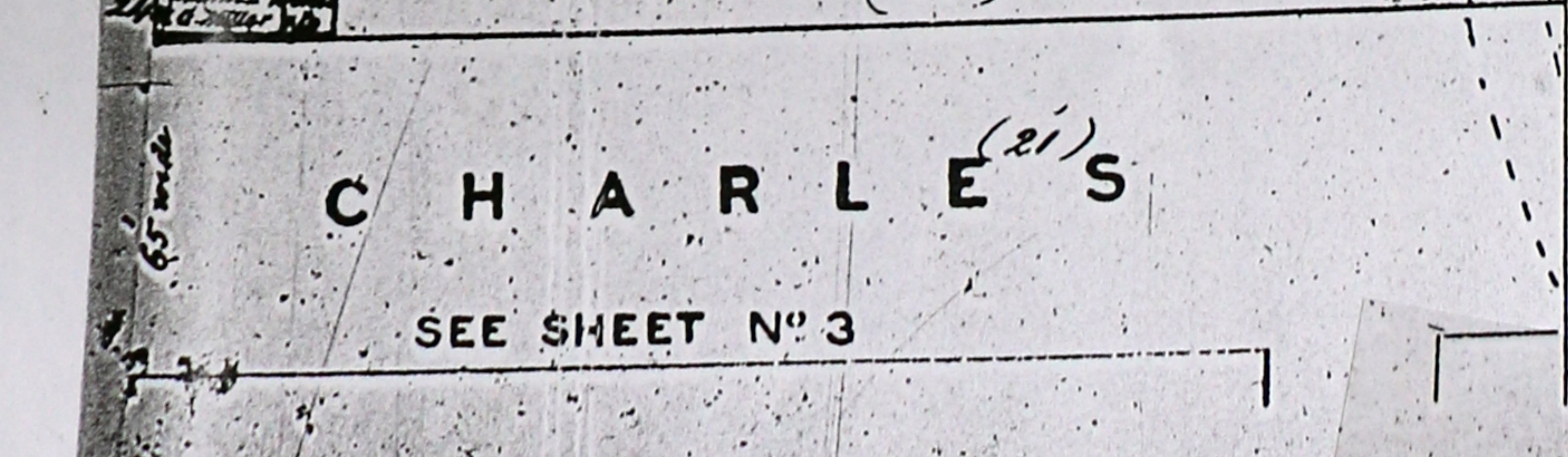
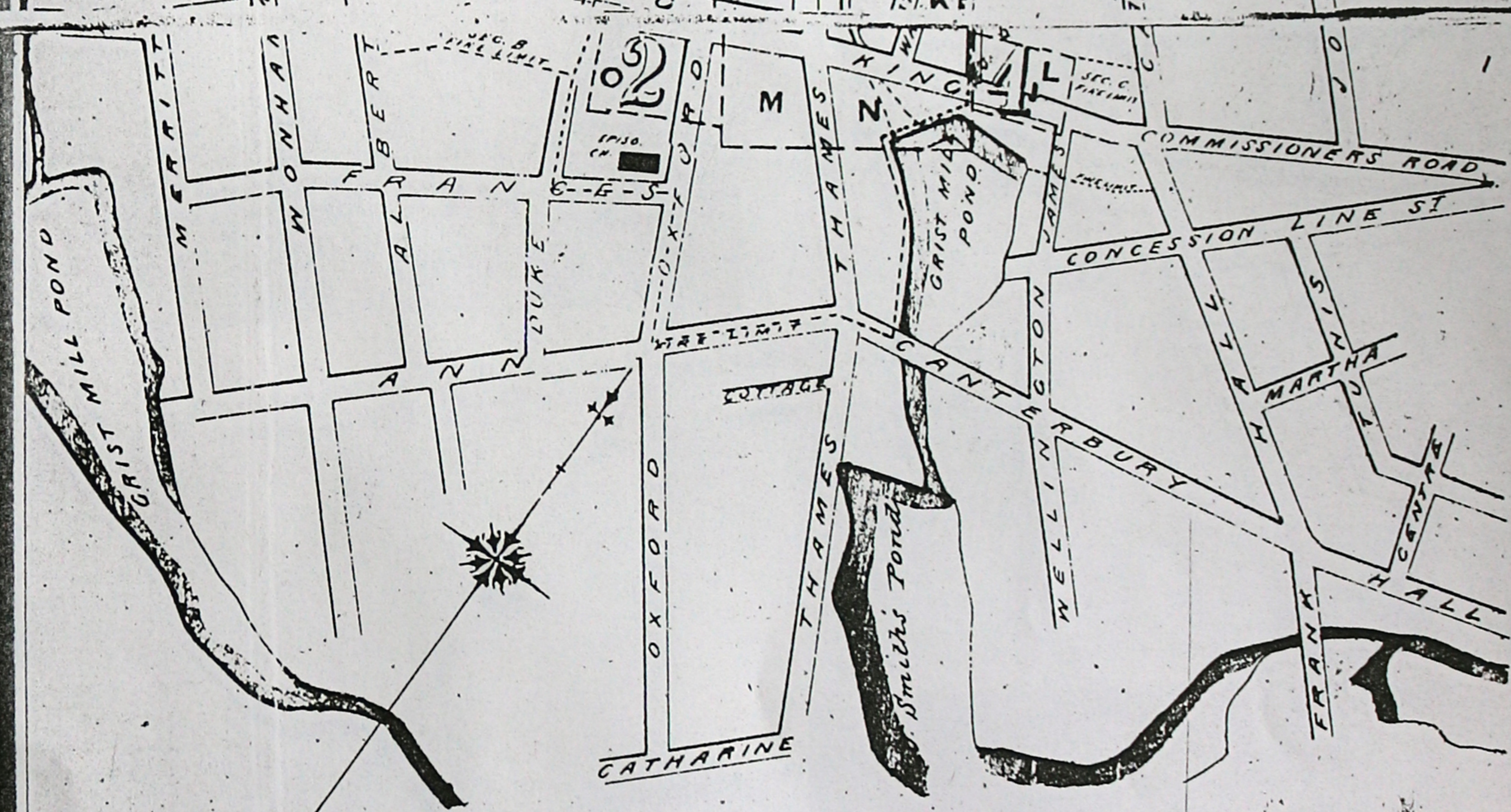
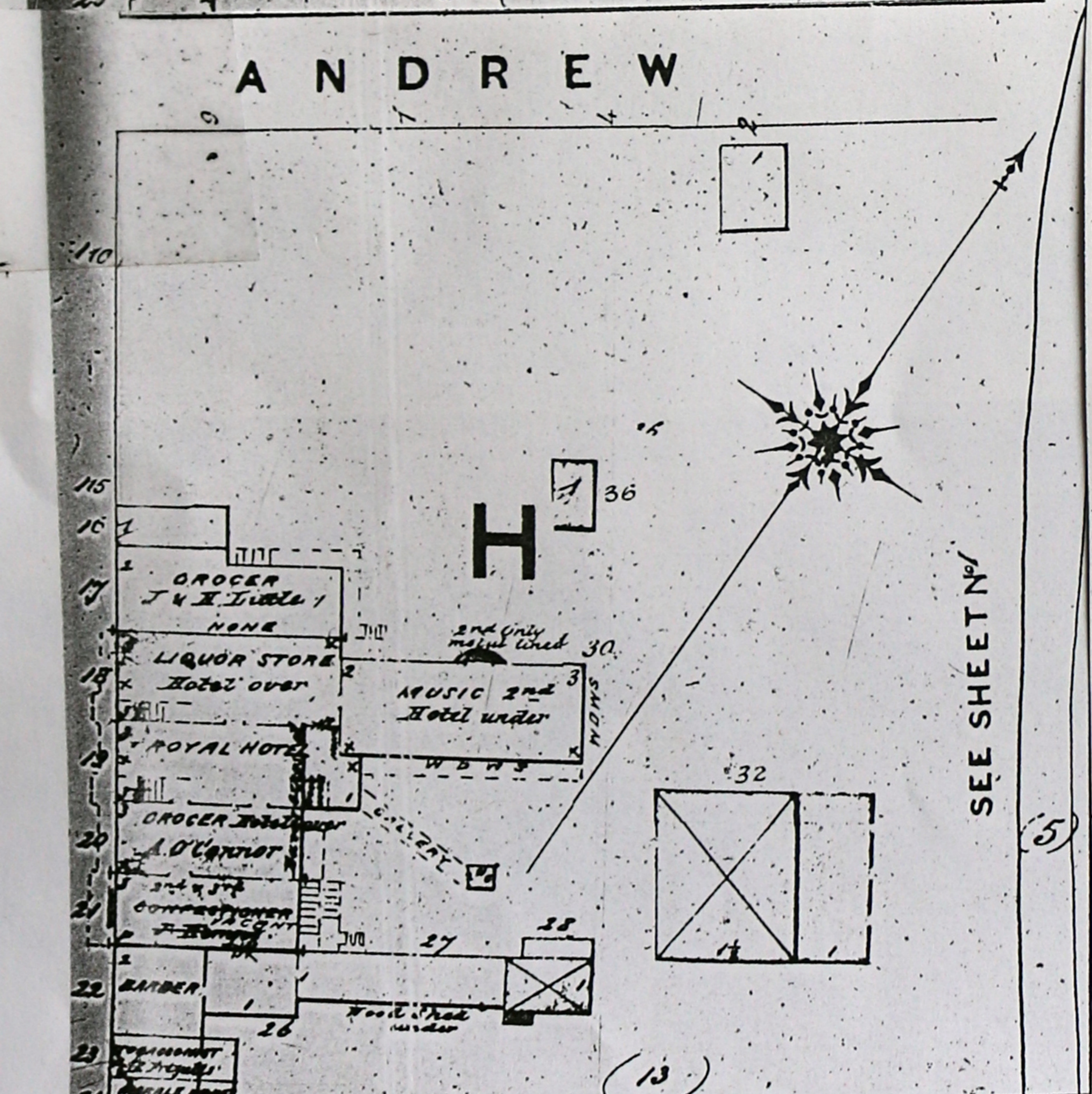
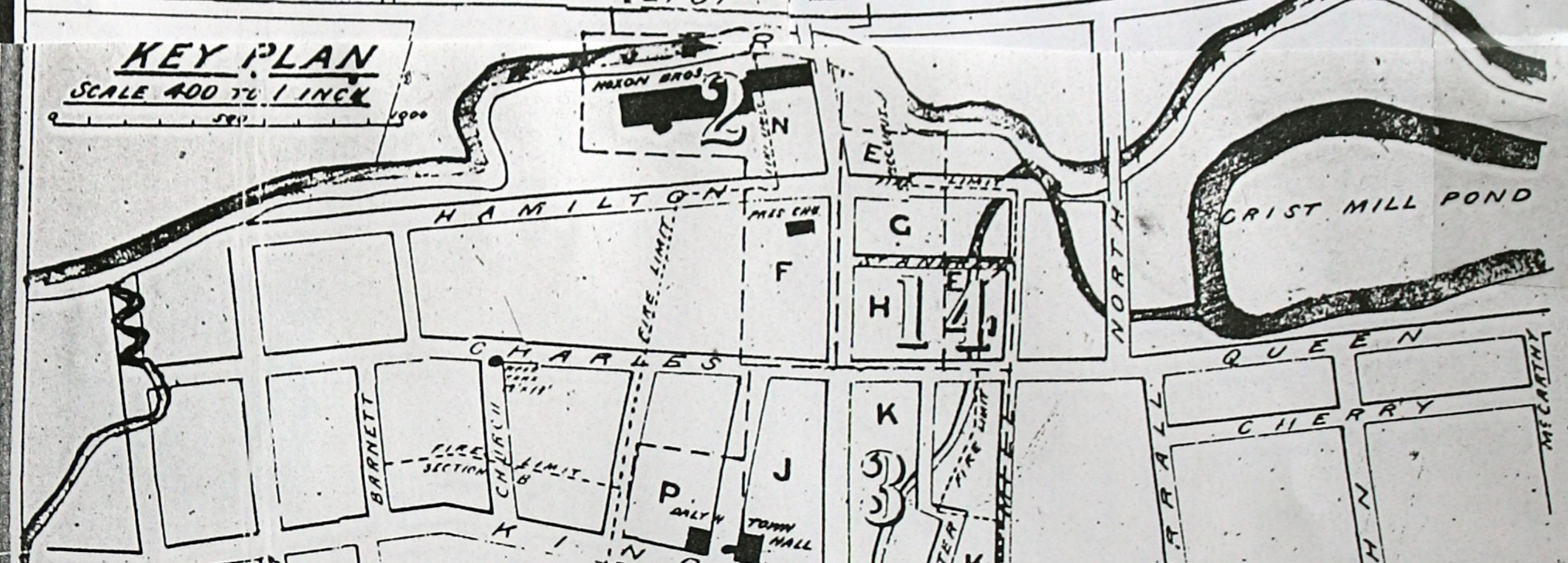
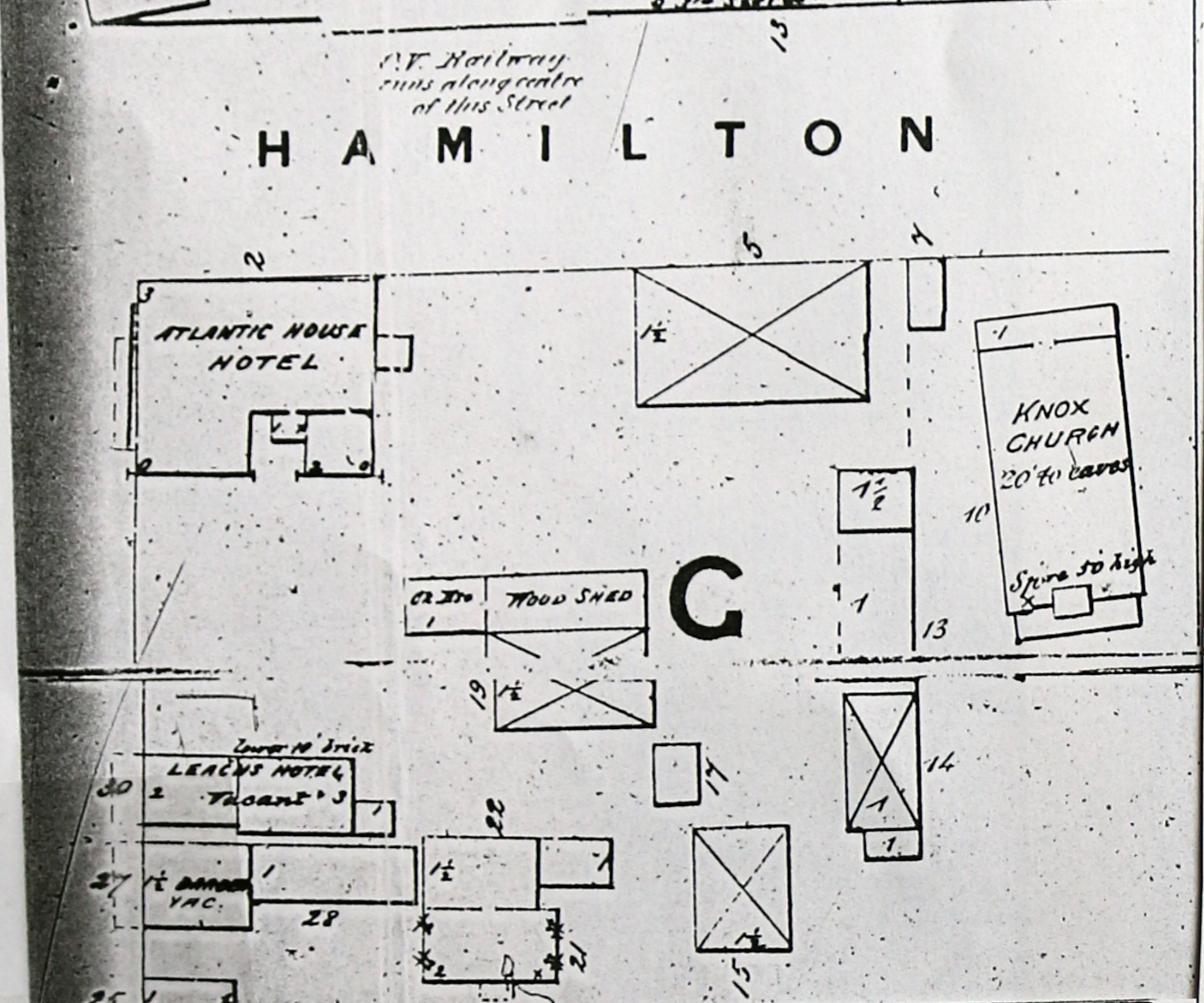
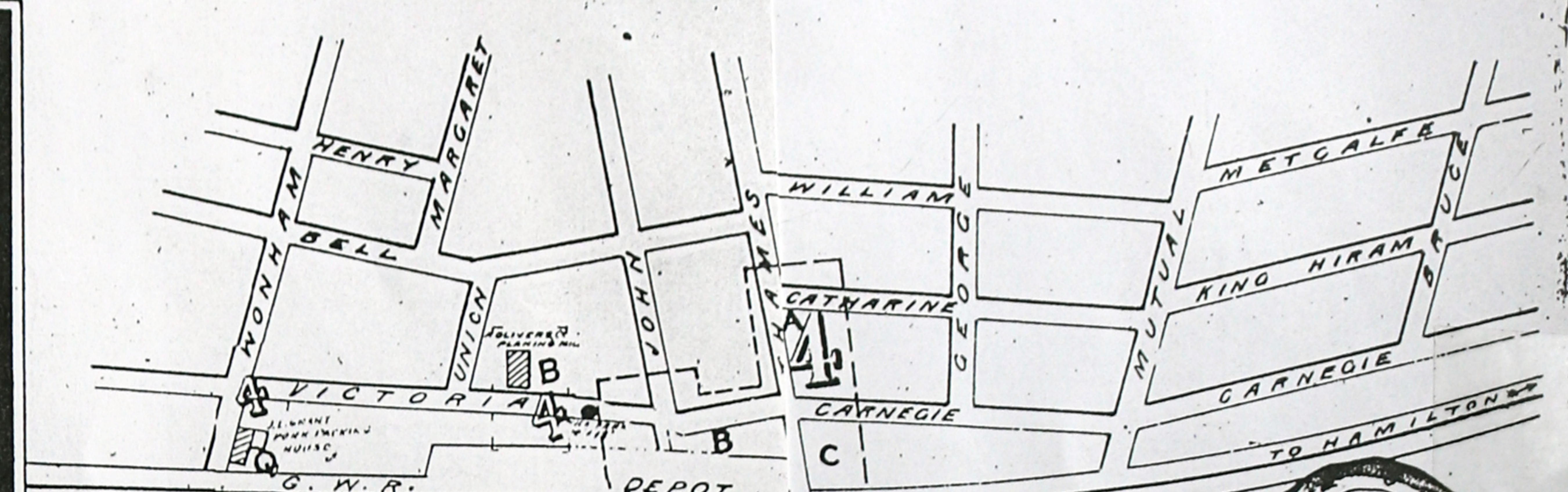
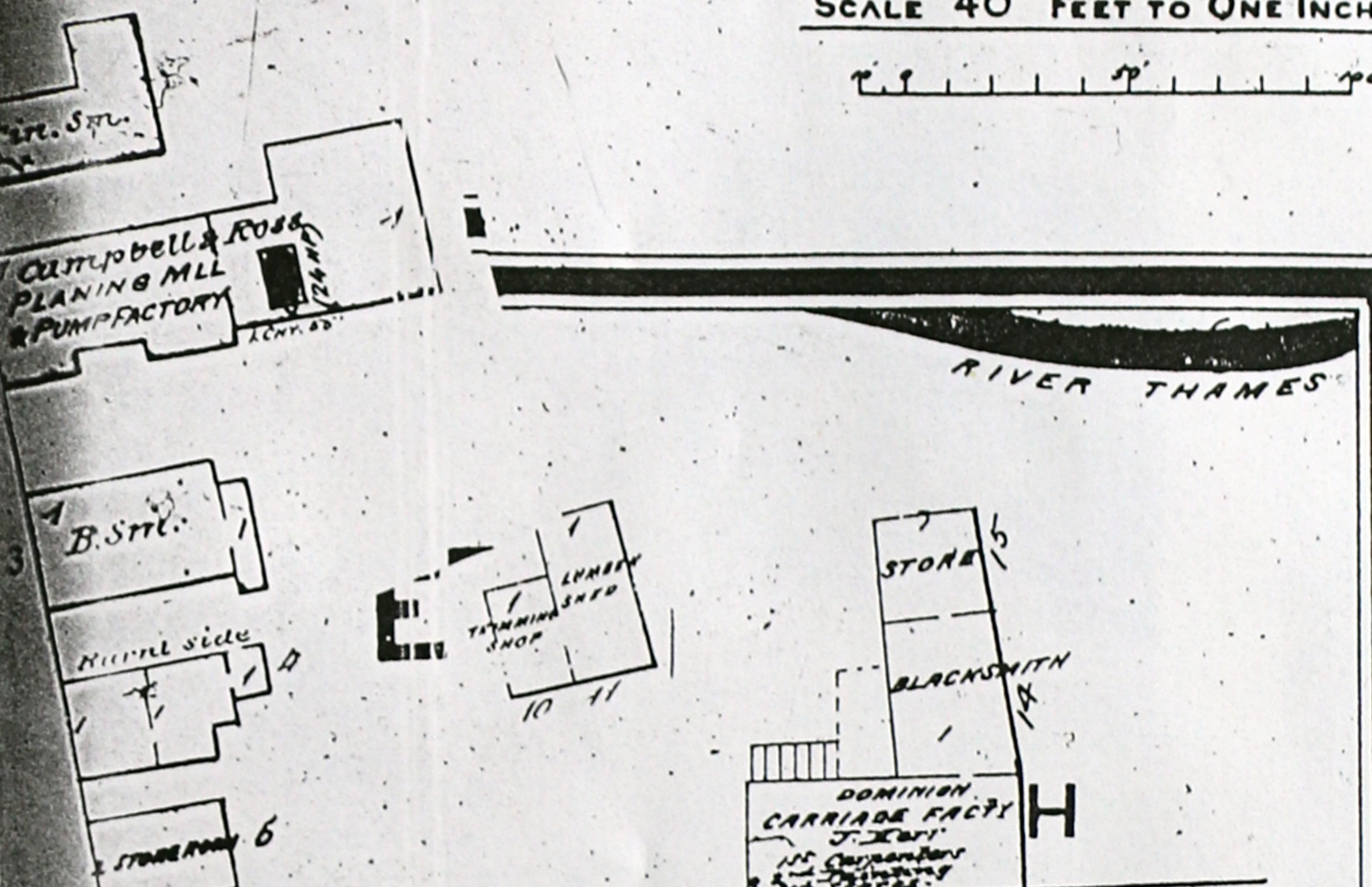
REVISED-MARCH 1879
 Chas. E. Goad C.E.
 103 St. James St. Montreal
 Sheet 1 - Queen

SCALE 40 FEET TO ONE INCH



Chas. E. Goad C.E.
 MONTREAL.
 August, 1876.

POPULATION - 5000
 Steam Fire Engine - (Sigsby, 3rd class)
 Two Hand Fire Engines
 Fire Comp. apparatus for Steam Engine & Foot
 Fire Comp. apparatus for Hand Engines, 70 ft. Hoop
 Hook & Ladder 40, 55 ft. Hoop
 1800 ft. Rubber Hose
 Water - River Thames - Mill Ponds & Taces
 1 Tank near Town Hall, filled from Roof
 Fire limits established
 Gas Works in Town



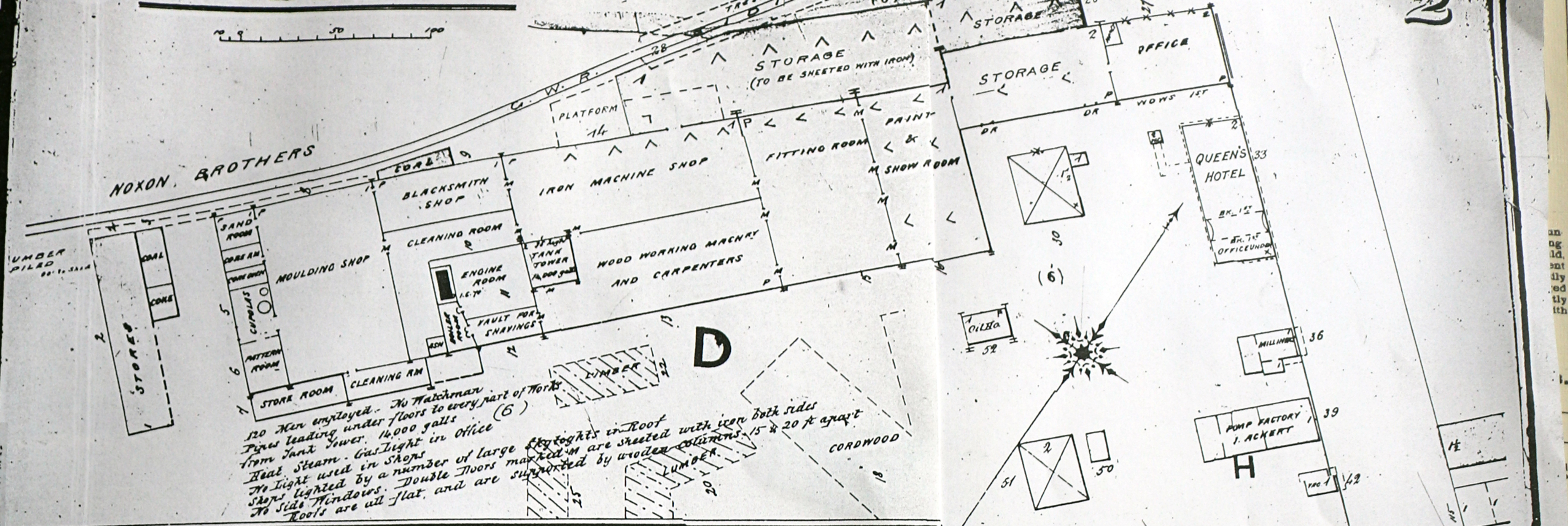
BUILDINGS	OPENINGS	ROOFINGS
Stone or Concrete.....	Windows.....	Slate.....
Brick.....	Iron Shutters.....	Tin or Metal.....
Brick Veneer.....	Galleries or Verandahs.....	Gravel or Composition P
Rough Cast or Plaster.....	Openings through.....	Shingles or Wood.....
Wood (dwellings).....	Iron Doors.....	Shingles in Mortar.....
Wood (sheds, etc.).....	Wooden Partition.....	Mansard Roof.....
Stables.....	Wooden Cornice.....	Wooden houses roofed with shingles, if not otherwise marked.
Lumber, piled.....	Metal Cornice.....	
Steam Boiler.....	Brick Parapet.....	
Steam Engine.....	Firewall thro. roof 1' 0".....	
Specially Hazardous.....	do do 2' 0".....	
	Skylight.....	
	Openings under do.....	

Entered according to Act of Parliament of Canada, in the year one thousand eight hundred and seventy-six, by CHAS. E. GOAD, in the Office of the Minister of Agriculture at Ottawa.

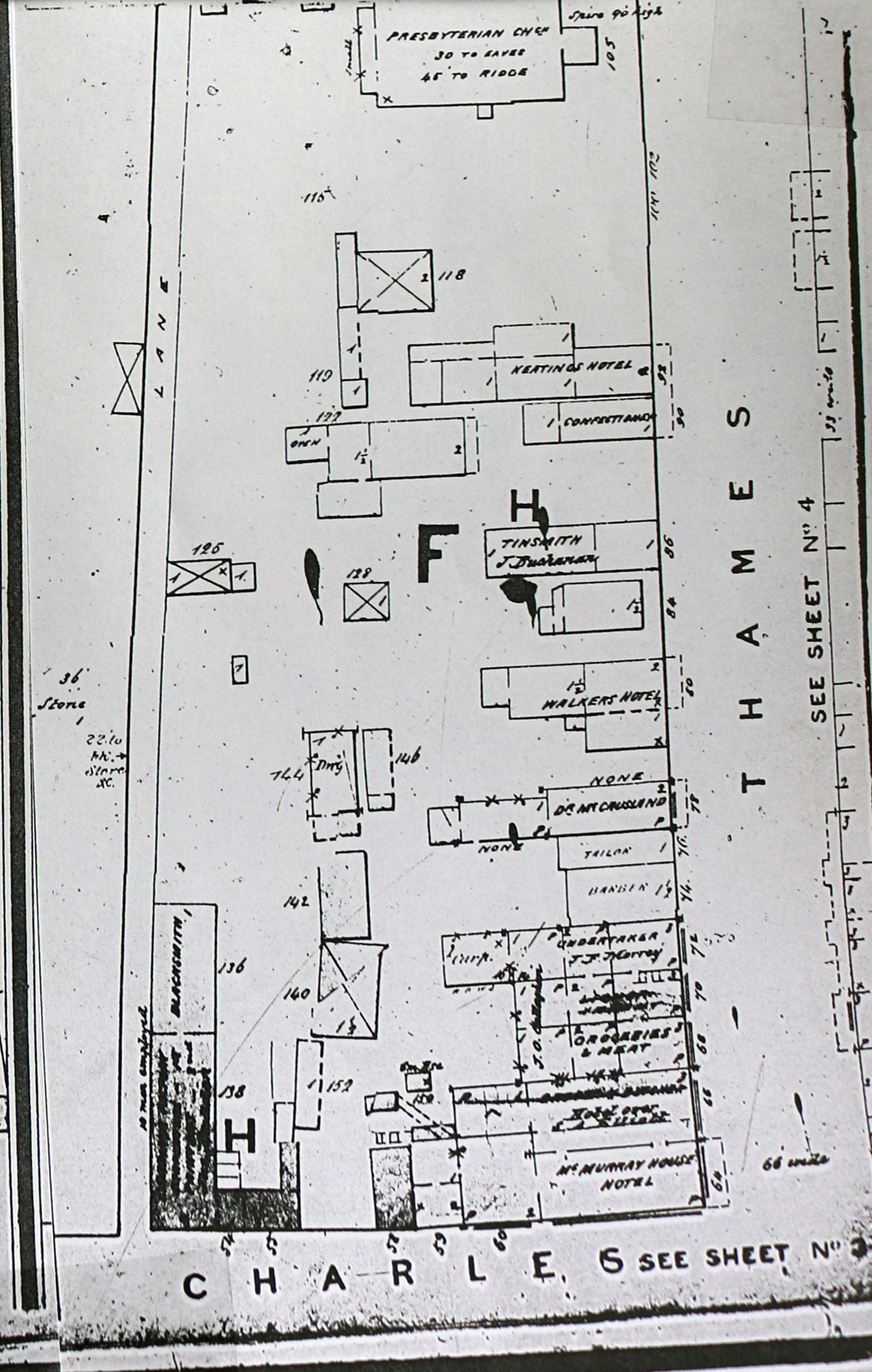
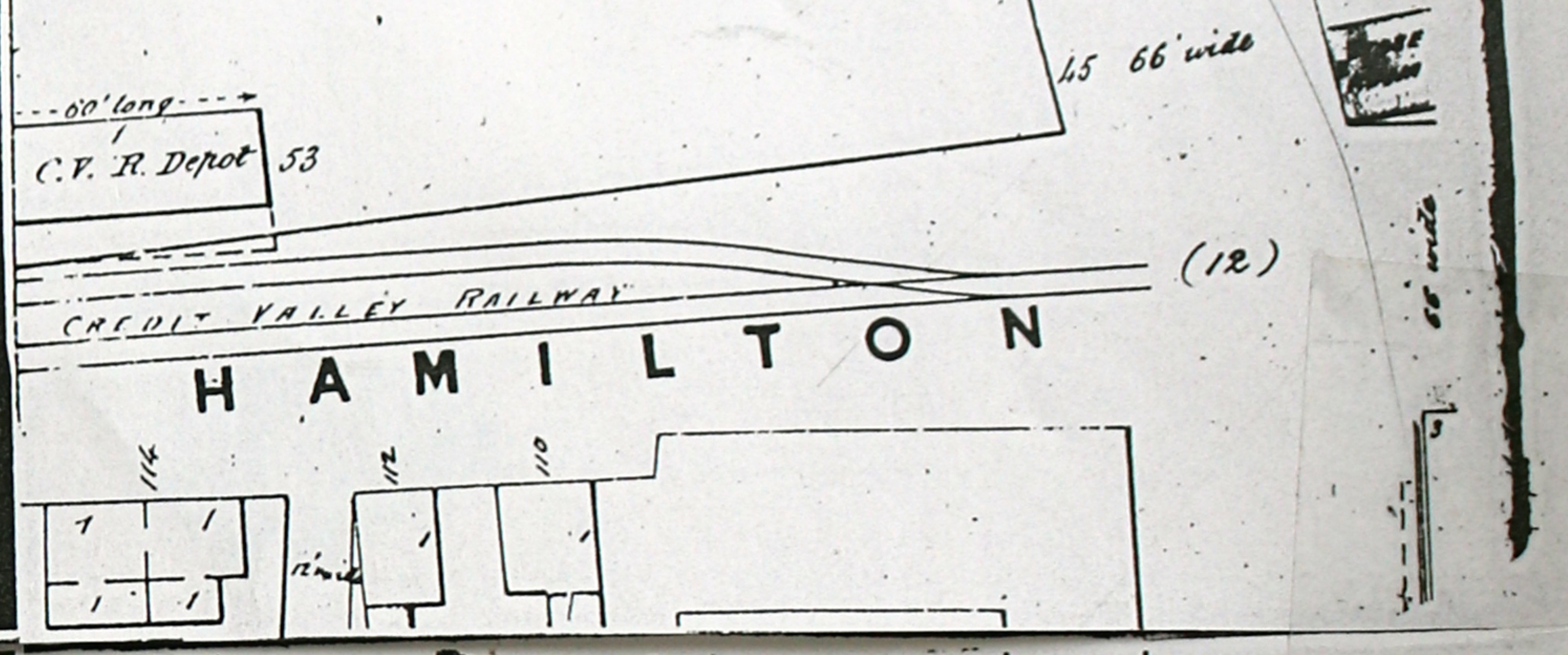
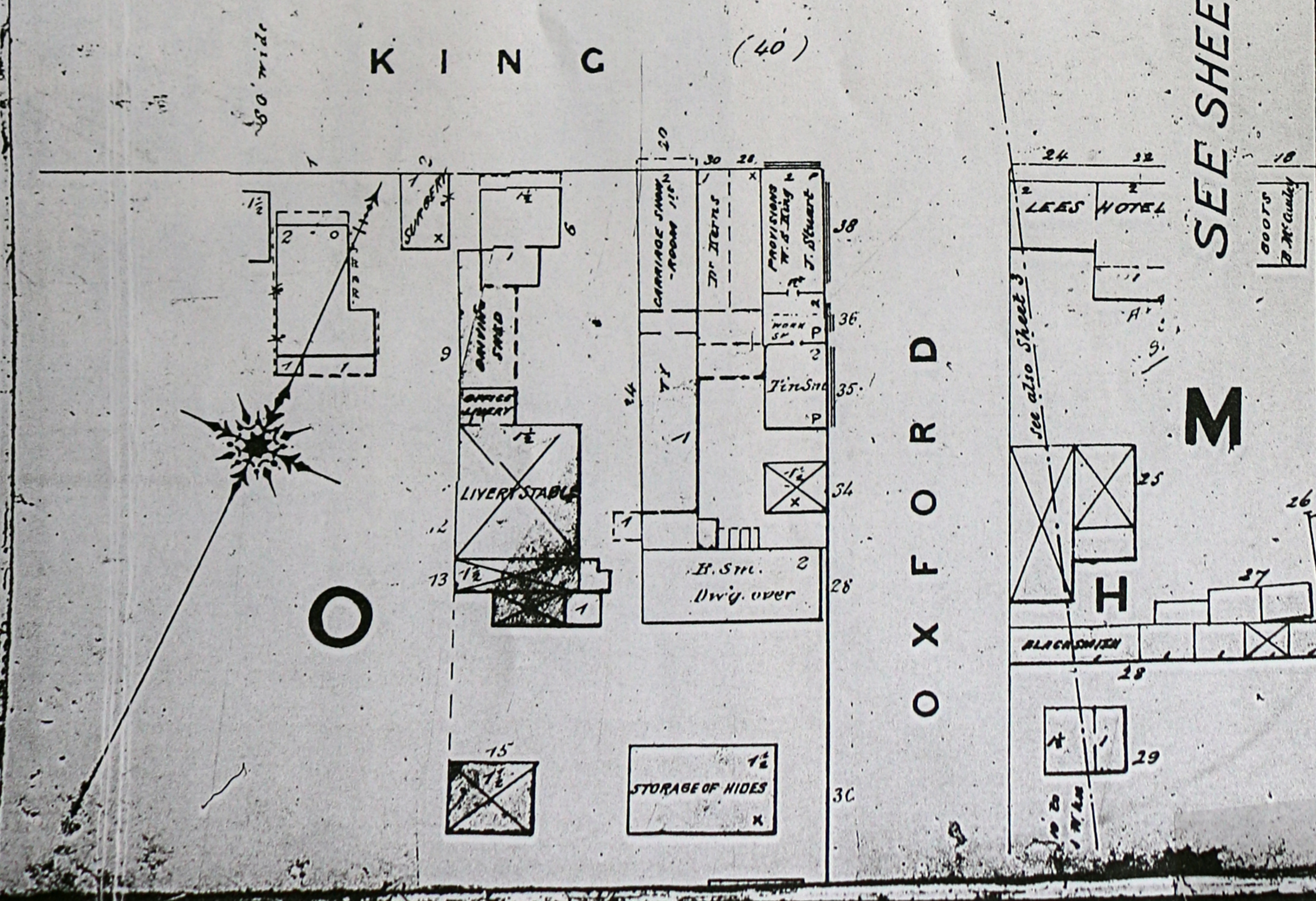
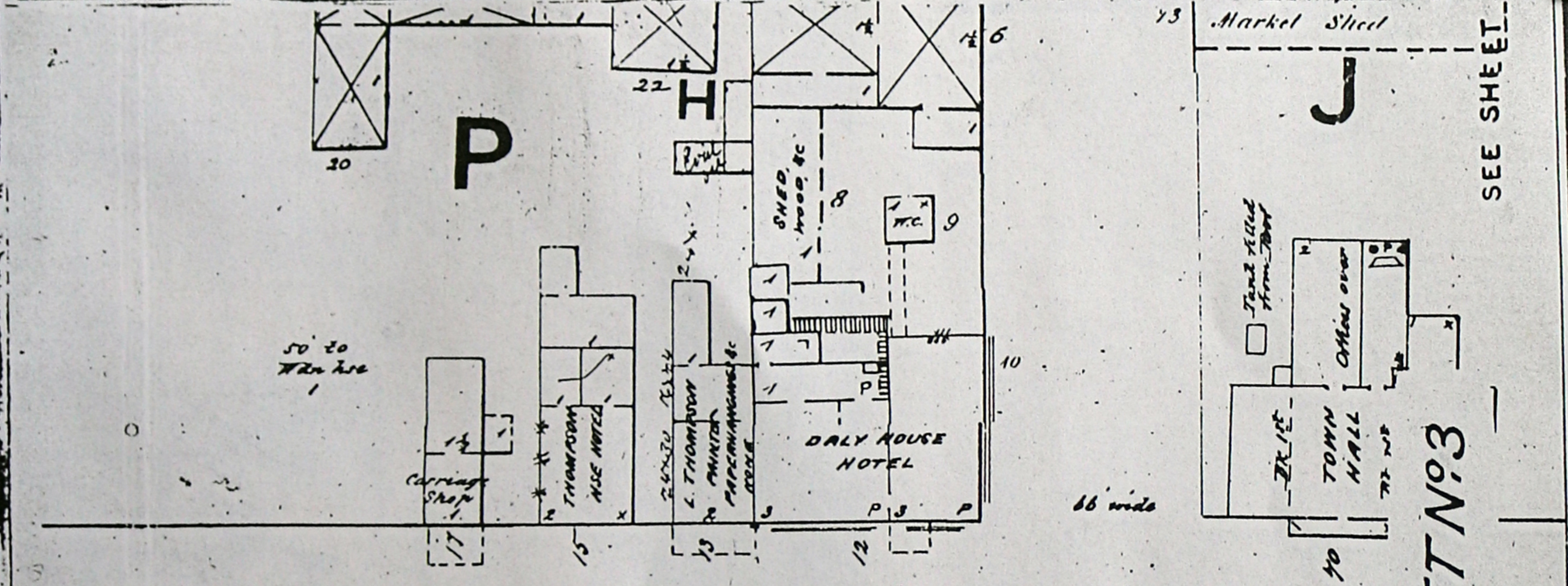
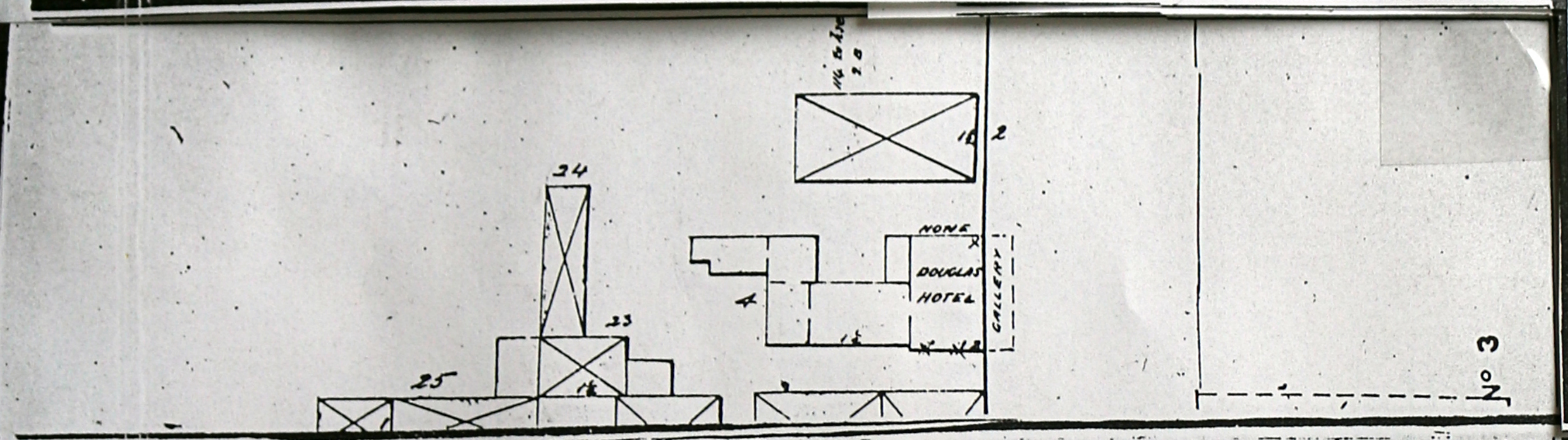
2 INGERSOLL

RIVER BRIDGE THAMES

2



120 Men employed - No Watchman
 Pipes leading under floors to every part of Works
 from Tank Tower, 14,000 galls
 Heat Steam - Gas Light in Office
 No light used in Shops
 No light by a number of large skylights in roof
 Skylights are sheeted with iron both sides
 15 & 20 ft apart
 Double doors supported by wooden columns
 No side windows
 Roofs are all flat, and are supported by wooden columns



SEE SHEET NO 3

SEE SHEET NO 4

CHARLES SEE SHEET NO 3

SEE SHEET N° 2

SEE SHEET N° 1

CHARLES (21)

INGERSOLL

(25)

(26)

T H A M E S

K

W A T E R

(24)

(24)

O X F O R D



2

J

SEE SHEET

(40)

(38)

68 wide

61 wide

D. Walters & Co
JEWELLERY
J. Harris
Nancy Goods
TRIBUNE PRINTING
BOOK STORE
McKenzie & Co
Dry Goods
Clothing
G. A. Thompson
DRY GOODS
A. R. Harris
GROCER
J. M. Wilson

K I N G

W A T E R

H

K

TANNERY

ST. BROWN

2 Mill Pond

10 No

42

75-1 Mark

TINSMITH

ST. BROWN

10 No

42

75-1 Mark

TINSMITH

ST. BROWN

10 No

42

75-1 Mark

TINSMITH

ST. BROWN

10 No

42

75-1 Mark

SEE SHEET N° 2

M

(44)

(24)

N

(36)

Mill Pond Water (36)

SEE SHEET

(36)

(36)

(36)

(36)

INGERSOLL

4

