



Ingersoll Centennial parade participants: Former mayors of Ingersoll. 1. S. E. Brady [1927-1928] 2. Dr. Garth Murray [1949-1951] 3. J. M. Wilson [1934-1935] 4. Ken R. Daniel [1943-1944] 5. Alec H. Edmonds [1938-1939] 6. unknown 7. J. Vern Buchanan [1937] 8. Charley W. Riley [1946-1948]. Photographed by John McTaggart.



Ingersoll Centennial parade, Thames Street, 1952. Depicts a parade on Thames Street, looking north east. Taken from the vantage point of a roof top. Shown is Star Café, Bank of Montreal, Diana Tea Room, J. M. Wilson Hardware, Tribune office, Sterling Meats, Roberts & Co., Ladies Wear. Photographed by John McTaggart.



Ingersoll Centennial parade, Thames Street, 1952. Depicts Wilson's Hardware stores, Ingersoll Tribune, Sterling's Meats, Shecter's Ladies wear, Robert's Ladies wear, Featherstone's Dominion grocery store, Moon's Mens wear, Chisim's optometrist, Neill's shoes. Photographed by John McTaggart.



Ingersoll Centennial parade, Thames Street, east side, looking north. Depicts Hydro shop, Rexall drugs, Jack's, Agnew Surpass, Walter's Jewelry, Barter's Flowers, Passmore's Jewelry, Smith Kerr, North American Cyanamid horse drawn wagon, dump truck. Photographed by John McTaggart.



Ingersoll Centennial parade, Stagecoach, 1952 Group depicted in period costume on a horse drawn stagecoach, likely taken in Victoria Park. Photographed by John McTaggart.



Ingersoll Centennial parade, corner of Thames Street at King Street, looking north east, 1952. R. S. Clark truck. Dr. Charles Kennedy in playpen, David Stone standing baby. Allan G. Hall General Insurance depicted. Photograph by John McTaggart.



Ingersoll Centennial parade, staging the parade at Victoria Park. Depicted left to right: unknown, Susan Hutt, David Stone, ? Henderson Walker, Joan Ford Kerr, posed in front of the Stone National Fertilizer float. Photographed by John McTaggart



Ingersoll Centennial parade, corner of Thames Street at King Street, looking east on King Street, 1952. Allan G. Hall General Insurance depicted, as well as Barber shop, Todd's pool hall, bowling alley, Winders Bakery, Brassi's Fruits, Roy O'Dell's Garage. Photographed by John McTaggart.



Ingersoll centennial celebrations, Victoria Park, 1952, grand stand depicted.



7.
Group depicted in period costume, likely taken in Victoria Park during centennial celebrations. Mrs. Harold Uren, Mrs. Charles Hogg, Dawn Martin are depicted.



Group depicted in period costume, likely taken in Victoria Park during centennial celebrations. Starter tower in background. Patricia Osborne has her back to the camera, standing. Photographed by John McTaggart.



Group depicted in period costume, likely taken in Victoria Park during centennial celebrations. Depicted Patricia Osborne, Margery Sherlock, Margaret Hunt, Mrs. Harold Uren, McBride. Photographed by John McTaggart.



Group depicted in period costume, likely taken in Victoria Park during centennial celebrations, Beard contest. Depicted, Art Presswell, David McClay, Guy Zavitz.



Group depicted in period costume, likely taken in Victoria Park during centennial celebrations, Beard contest. Depicted, Doug 'Zip' Cole, Bob Collins, Mary Morgan, Smith. Bob Collins won the beard contest, he was teased that the only reason he won, was that he had dated Mary Morgan.



Group depicted in period costume, likely taken in Victoria Park during centennial celebrations, Beard contest. Depicted, Doug 'Zip' Cole, Bob Collins, Mary Morgan, Smith. Bob Collins won the beard contest, he was teased that the only reason he won, was that he had dated Mary Morgan. Photographed by John McTaggart.



Group depicted in period costume, likely taken in Victoria Park during centennial celebrations, Beard contest. Depicted, Doug 'Zip' Cole, Bob Collins, Mary Morgan, Smith. Bob Collins won the beard contest, he was teased that the only reason he won, was that he had dated Mary Morgan. Photographed by John McTaggart.



Marching band group depicted in Victoria Park during Centennial celebrations 1952. Depicted in the background is a Fleischer & Jewett Dodge truck float. Photographed by John McTaggart.



10.

Ingersoll Centennial parade, King Street near Albert Street, looking north, 1952. Ingersoll Pipe Band depicted.



Ingersoll Centennial parade, King Street near Albert Street, looking north, 1952. Horse drawn buggys, Dan Patch, depicted.



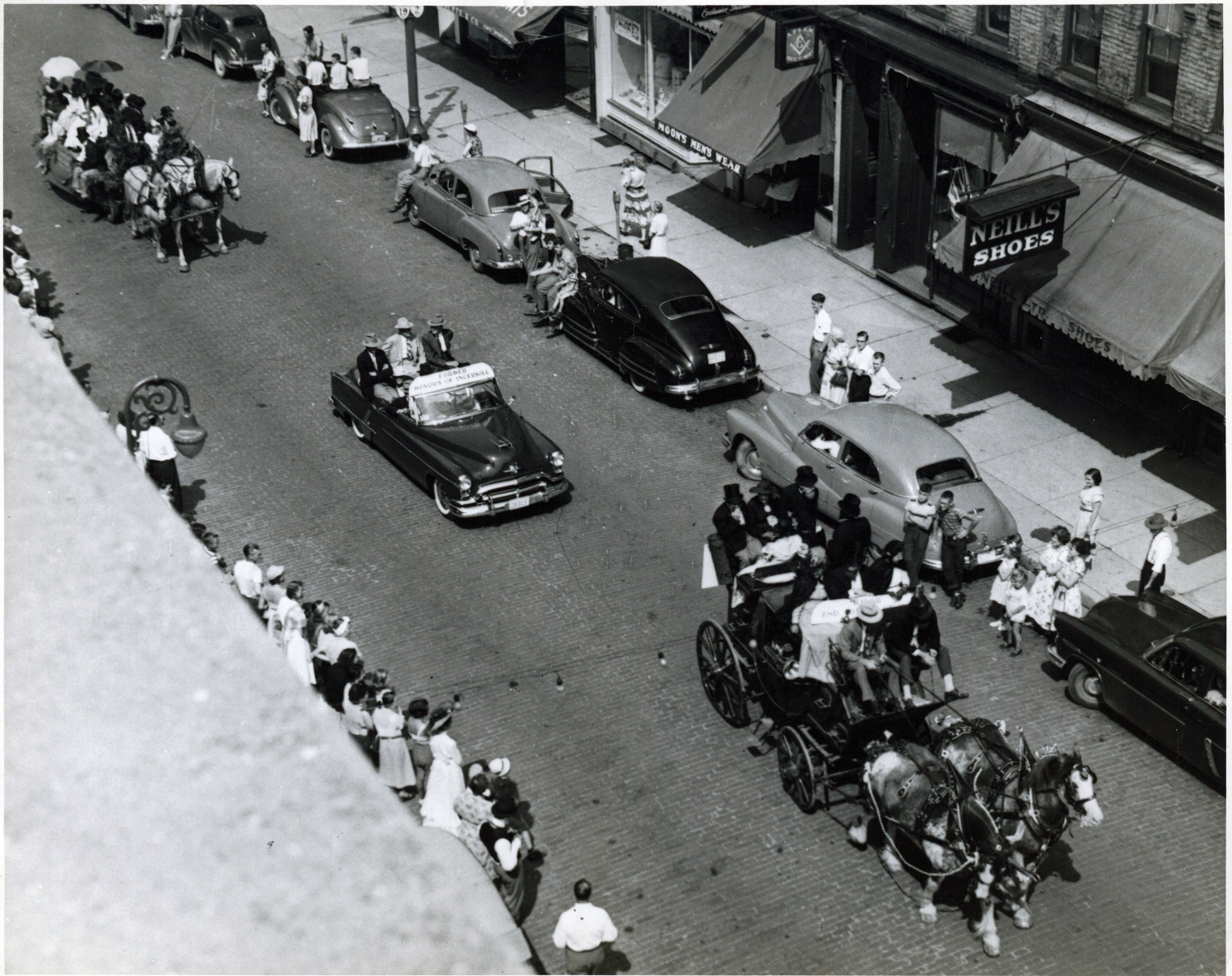
Ingersoll Centennial parade, Thames Street, looking north, 1952. Ingersoll Pipe Band depicted, Drum major, Bill Langstroth; Jack Little, Dave Ritchie, Robinson, Bob Wilson, Johnson, Don Wilson, Alec Collins. Stirling Meats, Wilson Hardware, Roberts & Co, Ladies Wear, Moon's Mens wear, Dominion store.



11.
Ingersoll Centennial parade, Oxford Street, looking north, 1952. Ingersoll Pipe Band depicted, Phyllis Newell, wife of King Newell, at left. Depicted at far left, Ingersoll Inn, Kirwin House/Oxford House, liquor store, Fred George, cold storage; vacant lot, Wesleyan Methodist Church.



Ingersoll Centennial parade, Thames Street, looking south, 1952. Float depicted, John Smith in tuxedo.



Ingersoll Centennial parade, Thames Street, 1952 Depicts Moon's Mens wear, Neill's shoes, horse drawn stage coach float, former mayors of Ingersoll float. Photograph taken from roof tops opposite by John McTaggart.



Ingersoll Centennial parade, Thames Street, 1952. Depicts Shirley Riddick Pittock, Irwin Haycock, Norma Wisson Haycock, Isabelle Huston Vyse, Jean Gibson. Metropolitan Store in the background.



Ingersoll Centennial, 1952 Guy Zavitz.



Ingersoll Centennial, Dog show, 1952. Depicted, Dave VanJounett, Fred Kean, Beth Kean Pappais.



Ingersoll Centennial, Dog show, 1952. Depicted, Beth Kean Pappais at far right. Photographed by John McTaggart.



Ingersoll Centennial, 1952. Depicted man, child, goat. Photographed by John McTaggart.



Ingersoll Centennial, Tug of War, 1952. Depicted, Beachville Quarry team; Bruce Zavitz, Bill Wilson, Mr. Wally Phillips, Art Heyland. Photographed by John McTaggart.



Ingersoll Centennial, Mayor, Tom Morrison at Victoria Park, 1952. Race track, horse track depicted. Photographed by John McTaggart.



Ingersoll Centennial parade, King Street at Albert Street, looking east, 1952. Depicted: Trinity United church, parade floats.

FILE - INGERSOLL CHEESE



Ingersoll Centennial parade, Victoria Park, mammoth cheese depicted, 1952. Replica mammoth cheese created commemorated the 1866 version that James Harris created.

Depicted left to right: Sue Henry, Doreen Simpson Hogg, ?, Arlington Robinson and his team of horses from Five Points; Harold Brumpton, worked at Ingersoll Cream Cheese all his life. Photographed by John McTaggart.



13.
Ingersoll Centennial parade, Victoria Park, Zurbrigg's float shown to the right with men in baker's hats.



18.

Ingersoll Centennial parade, King Street, looking west, 1952. Depicted the Y.M.C.A float, a penny farthing bicycle, high wheeler.



Ingersoll Centennial parade, 1952. Depicts, North American Cyanamid 1929 dump truck, as well as a horse drawn wagon assembling for the parade.



Ingersoll Centennial parade, 1952. Depicts, North American Cyanamid 1929 dump truck, as well as a horse drawn wagon assembling for the parade. Borden's Condensing plant is depicted in the background



Ingersoll Centennial parade, 1952. Depicts, Thames Street, looking north at the corner of King Street. Canadian Imperial Bank of Commerce on the left, Canadian Tire store on the right.



Ingersoll Centennial parade, 1952. Depicts Thames Street looking north at the corner of Charles Street. Horse drawn carriage shown. Tip Top tailors shown on the right. James D. Arnott is written on the reverse.



Ingersoll Centennial parade, 1952. Depicts Thames Street looking north from the corner of King Street. Spire of the post office and the John Morrow Company water tower can be seen in the distance. Brick street paving can be seen.



Ingersoll Centennial parade, 1952. Depicts Thames Street looking south from the corner of King Street. Depicts the Ingersoll Town Council horse drawn stagecoach parade float, Ingersoll Pipe Band. East side of Thames Street, Elliott's electric supplies, repairs, appliances, contracting; Canadian Tire store; Eaton's; James A. Cole Furniture Company and its subsidiary, the Ingersoll Casket Company. Brick street paving depicted.



Ingersoll Centennial parade, 1952. Depicts Thames Street looking east from the corner of King Street. Borden's Company horse drawn wagon float is shown toting milk cans, individuals in period costume. Allan G. Hall General Insurance building shown, north east corner Thames & King Streets.



Ingersoll Centennial parade, 1952. Depicts Thames Street looking east from the corner of King Street. Tractor drawn float featuring Chemical Lime 1929; Chemical Lime dump truck. East side of Thames streetscape including: P. T. Walker furniture; Hydro shop; Rexall drugs; IOOF hall; Passmore's; Smith & Kerr Clothing; Sally's Style shop; Walker stores. Decorative street lights, brick paving shown.



Ingersoll Centennial parade, 1952. Depicts Thames Street looking east from the corner of King Street. Horse drawn wagon float featuring William Stone & Sons Limited, National Fertilizer 1912; truck drawn wagon float William Stone & Sons Limited, National Fertilizer with bunting. East side of Thames streetscape including: P. T. Walker furniture; Hydro shop; Rexall drugs; IOOF hall; Passmore's; Smith & Kerr Clothing; Sally's Style shop; Walker stores. Brick paving shown.



Ingersoll Centennial parade, 1952. Depicts Thames Street looking east from the corner of King Street. Horse drawn wagon float featuring North American Cyanamid Limited 1929; North American Cyanamid Limited dump truck. East side of Thames streetscape including: P. T. Walker furniture; Hydro shop; Rexall drugs; IOOF hall; Passmore's; Smith & Kerr Clothing; Sally's Style shop; Walker stores. Brick paving shown.



Ingersoll Centennial parade, 1952. Depicts Thames Street looking east from the corner of King Street. Replica of the Mammoth Cheese four draft horse drawn wagon float, driven by gentlemen in period costume created by Ingersoll Cheese Company, hoop skirted woman on back of float. East side of Thames streetscape including: P. T. Walker furniture; Hydro shop; Rexall drugs; IOOF hall; Passmore's; Smith & Kerr Clothing; Sally's Style shop; Walker stores. Brick paving shown.



Ingersoll Centennial parade, 1952. Depicts Thames Street looking east from the corner of King Street. Four Zurbrigg's Bakery delivery vans are depicted in a row with bakers in costume perched on the rear. East side of Thames streetscape including: P. T. Walker furniture; Hydro shop; Rexall drugs; IOOF hall; Passmore's; Smith & Kerr Clothing; Sally's Style shop; Walker stores. Decorative street lights Brick paving shown.



Ingersoll Centennial parade, 1952. Depicts Thames Street looking east from the corner of King Street. Belldaire Dairy horse drawn wagon float depicted with several individuals in period costume, 'The Belles of Belldaire', including trumpeter. East side of Thames streetscape including: IOOF hall; Passmore's; Smith & Kerr Clothing; Sally's Style shop; Walker stores.