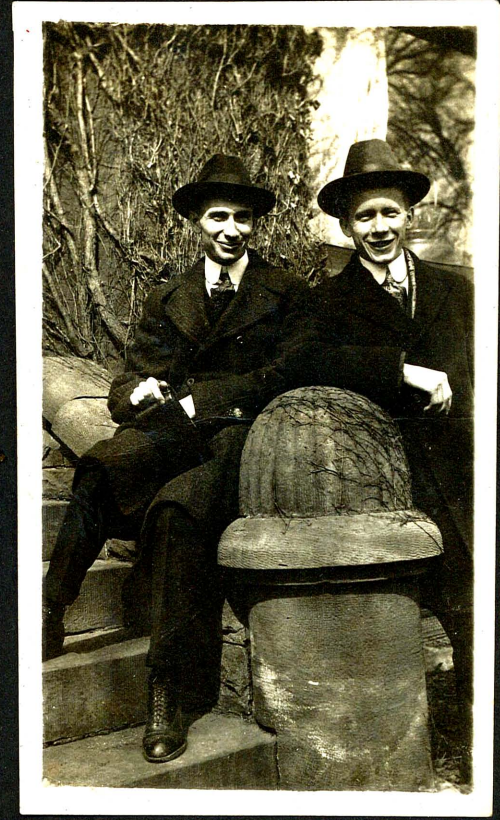


Let the man born in Old England love
the dear old land the most,
For what spot a man is born in, of that
spot he loves to boast.
Let the Scot look back toward Scotland
with a longing in his eyes,
And the exile from Old Erin think her
green shores Paradise.

Native born are we, are we,
Canada, dear Canada,
And the pride thrills through and
through us,
'Tis our birthplace—Canada.





Left to right: Ray Page, Alex Campbell, Sarah Campbell, John Campbell, Bessie Campbell, Louise Campbell, Helen Campbell



L to R: The Campbells: Bessie, Ray Page, Sarah, John, Louise, Alex, Helen



Bill Campbell

Jan. 1917



Sarah MacLeod Campbell

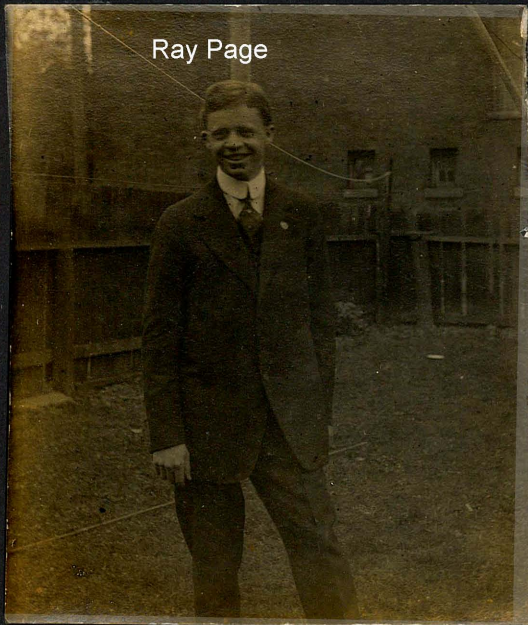


Alex Campbell moving wood





Sarah Campbell, standing.



Ray Page



Alex Campbell, Louise Campbell, Sarah Campbell



Front of the Campbell homestead: Bessie Campbell holding horse. Sarah MacLeod Campbell, Helen Campbell [child], Louisa Campbell



Sarah MacLeod
Campbell

Louisa

Bessie Campbell

William Campbell, seated

1918



The Campbells on the porch:
L to R:
Bill Campbell
Sarah MacLeod Campbell, standing
Bessie Campbell, 3rd from R
Louisa Campbell & Ray Page,
far right.



Embro Town Hall

1919



Bessie Campbell, seated

1917



Louisa Campbell



Louisa
Campbell

Bill Campbell

1917.



1917.



1917.

The Campbells: Sarah, Alex, Louisa, ?, Bill



Campbell homestead



Bessie Ann Campbell, 1918

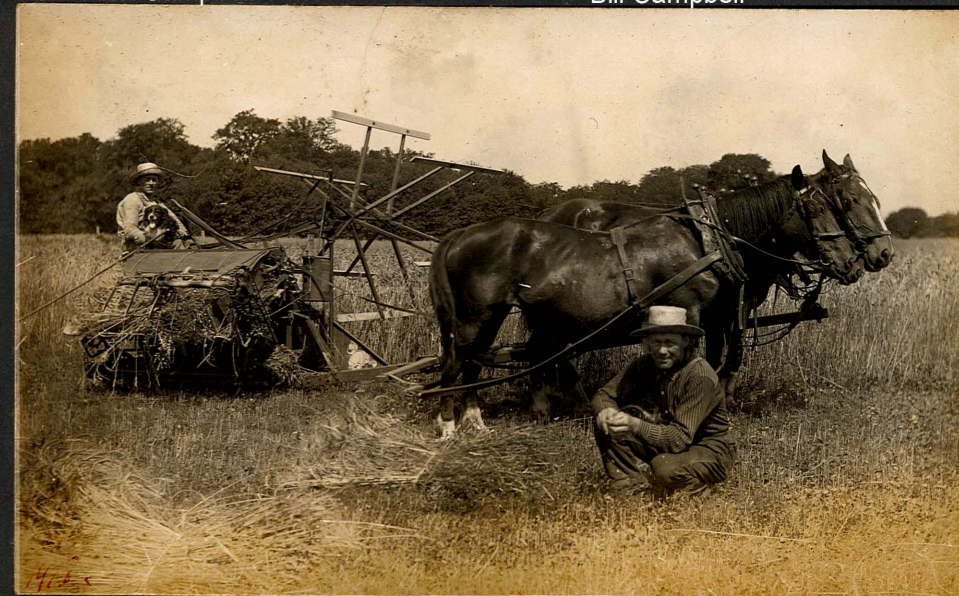


Using the binder on the Campbell farm



Alex Campbell

Bill Campbell





Alex Campbell



Bessie Ann Campbell



Louisa Campbell



Ray Page, right



Bessie Campbell

A. G. McCorquodale

Louisa Campbell
Page

Alex Campbell

Sarah MacLeod
Campbell



Alex Campbell



1917



1918

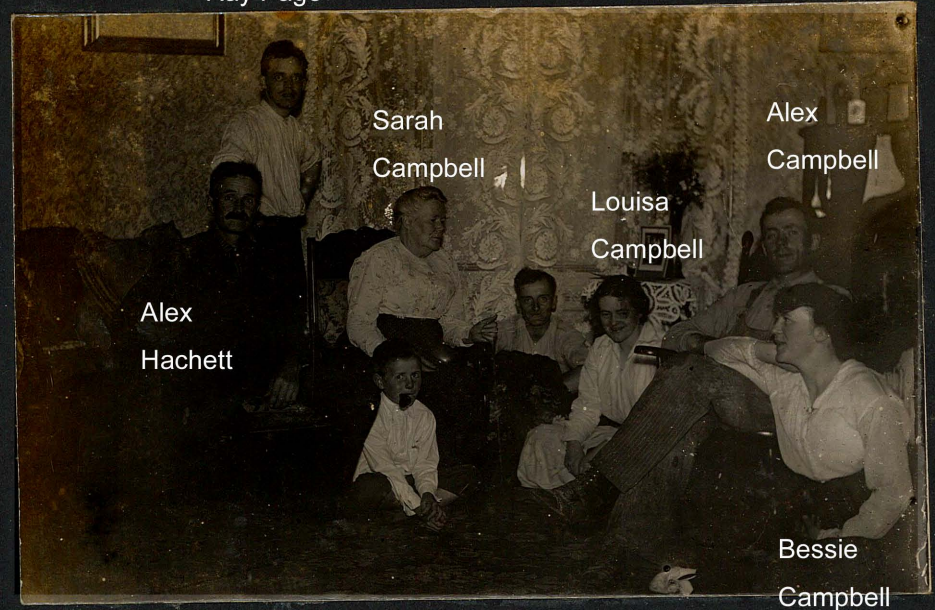


1917



1917

Ray Page



Sarah
Campbell

Alex
Campbell

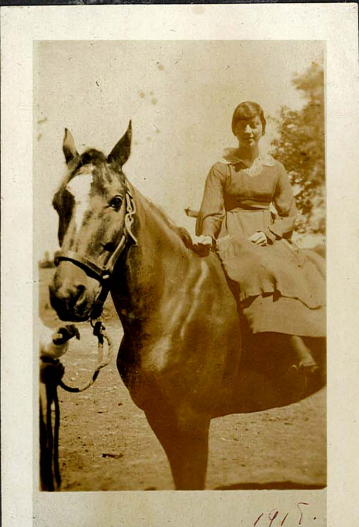
Louisa
Campbell

Alex
Hachett

Bessie
Campbell



1917



1917



1917



1917





1918.



1918.



1918.

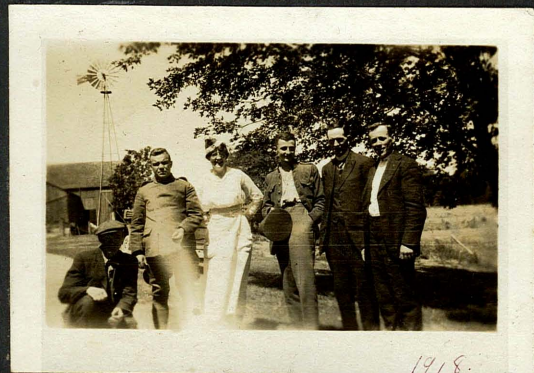


1912.



1915.

left: Sarah MacLeod Campbell



1918.

Alex Campbell, far right



1912.



1912.



1912.



Louisa Campbell Page



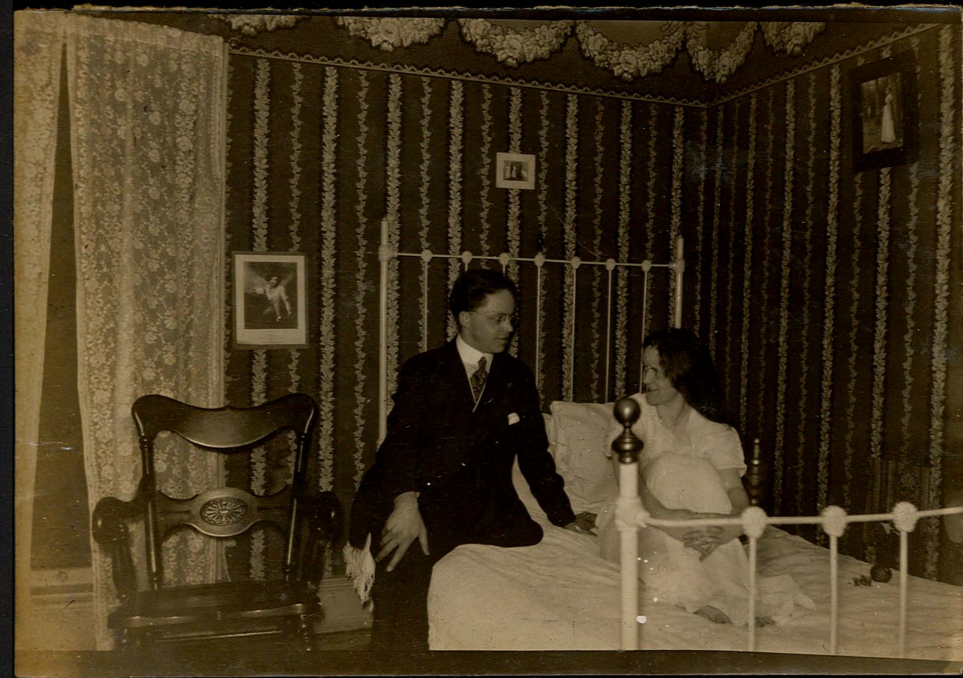
Louisa Campbell Page, left



early double exposure: Louisa Campbell Page



Louise (Campbell) Page



Ray Page

Louisa Campbell Page





June 1919.
Campbell homestead , June 1919. Lot 12, Concession 6, West Zorra



1919.
Louisa Campbell Page, left



1919.
Louisa Campbell Page



June 1914.



June 1914.

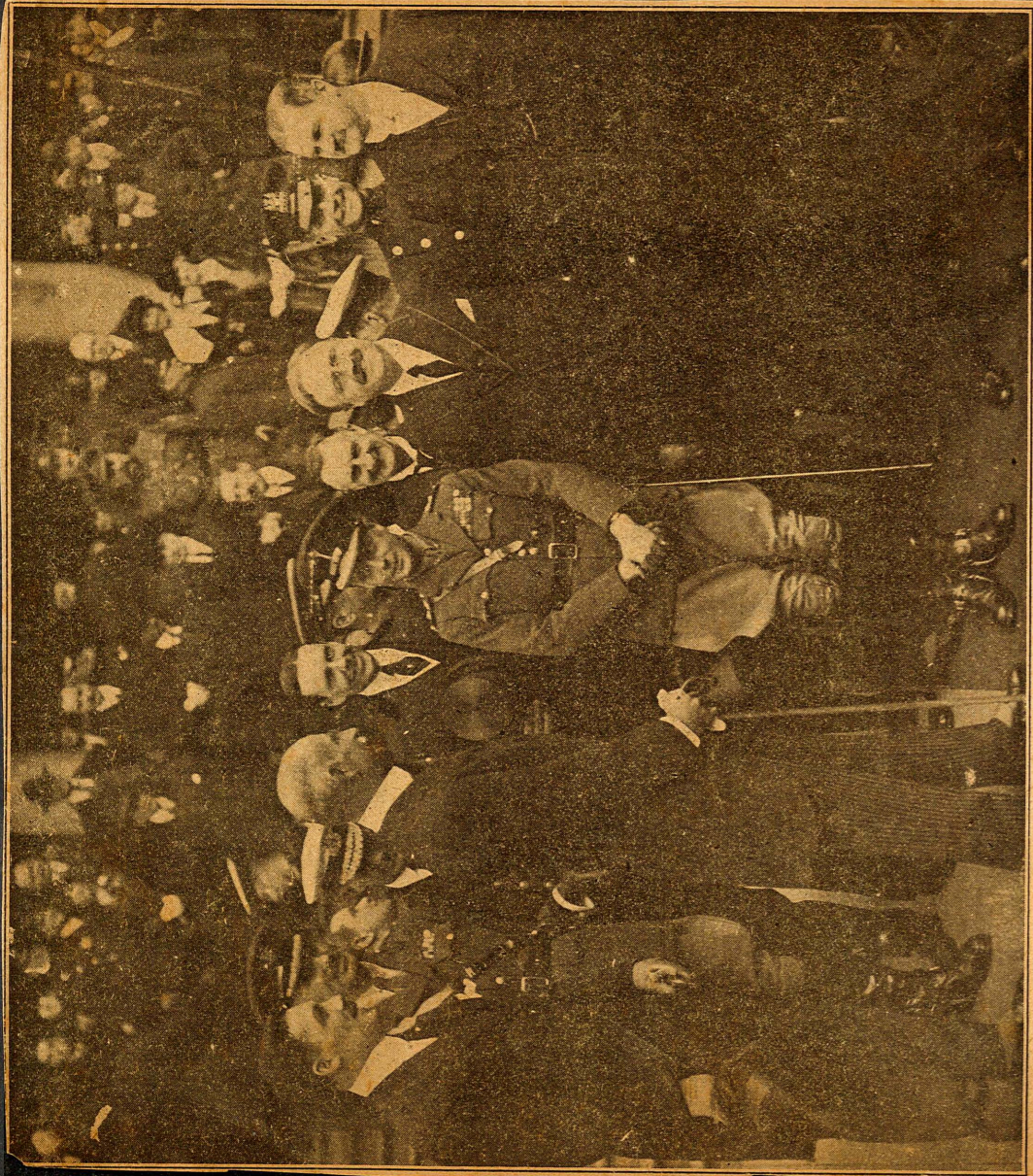


1919.



1914.





When Great Britain and the United States Meet.
 The Prince of Wales at the City Hall, New York City, where he was officially welcomed. In the group, left to right, are: Grover Whalen, Gen. Bethell, Rodman Wanamaker, William Phillips (representing the State Department), Viscount Grey (British Ambassador to the United States), and Mayor Hylan, of New York. This is the best picture of the Prince of Wales yet shown in our pages.



Bessie Campbell, left



Alex Campbell