



Conditions d'utilisation et droit d'auteur

Les reproductions fournies par BAC sont réservées à des fins de recherche ou d'études privées. Il incombe aux utilisateurs qui souhaitent utiliser ces reproductions pour toutes autres fins d'obtenir la permission écrite du titulaire du droit d'auteur. Le récipiendaire sera tenu responsable de toute infraction au droit de propriété de cette copie numérique.

BAC possède une vaste quantité de documents pour lesquels la propriété et le statut du droit d'auteur peuvent être difficiles à établir, soit en raison d'information insuffisante, soit à cause de leur origine mixte, c'est-à-dire publique et privée, ou encore parce qu'il s'agit de documents en partie publiés et en partie inédits. On suggère aux utilisateurs de consulter la *Loi sur le droit d'auteur* et d'obtenir un avis juridique lorsque l'interprétation du droit d'auteur soulève des questions. BAC n'a pas le mandat d'interpréter la *Loi sur le droit d'auteur* pour le bénéfice des utilisateurs, et il incombe à ces derniers de connaître les obligations que comportent les droits d'auteur.

Pour en savoir davantage, consultez la page « Avis » du site Web de BAC : <http://www.bac-lac.gc.ca/fra/Pages/avis.aspx>

Terms of use and Copyright

Any copy provided by LAC is restricted to research purposes or private study. Users wishing to use the copies for any other purpose should obtain written permission of the copyright owner. Responsibility regarding questions of copyright that may arise in the use of this digital copy is assumed by the recipient.

LAC holds enormous quantities of records for which the ownership and copyright status may be uncertain, either because of insufficient information or because of a mixture of public and private material, or of published and unpublished works. Users are urged to consult the *Copyright Act* and to seek legal advice when the interpretation of copyright raises questions. It is not the role of LAC to interpret the *Copyright Act* for users but rather it is up to the users to be aware of copyright issues.

For more information please consult the LAC, "Terms and Conditions" page: :
<http://www.bac-lac.gc.ca/eng/Pages/terms-and-conditions.aspx>

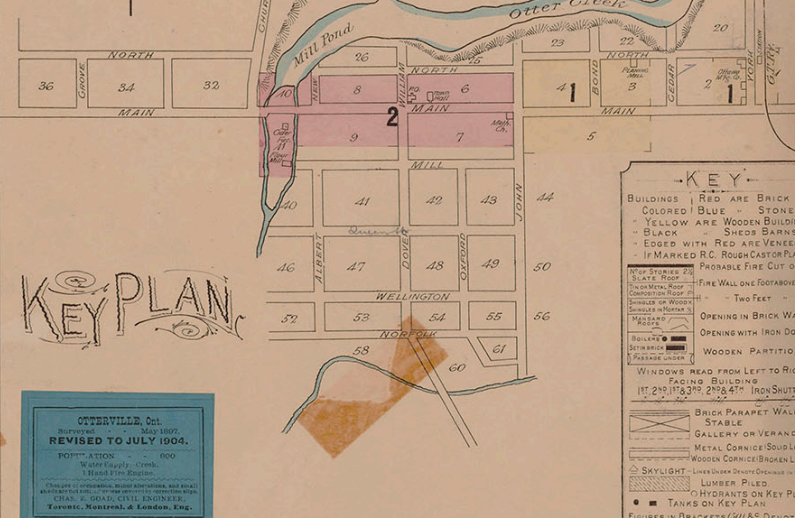
Otterville Ont. 1

POPULATION: 800

1 HAND FIRE ENGINE. 100' OF HOSE.
WATER SUPPLY: CREEK.

CHAS. E. GOAD C.E. MONTREAL 1897

SCALE 50 FT = 1 INCH
SCALE OF KEY PLAN 500 FT = 1 INCH

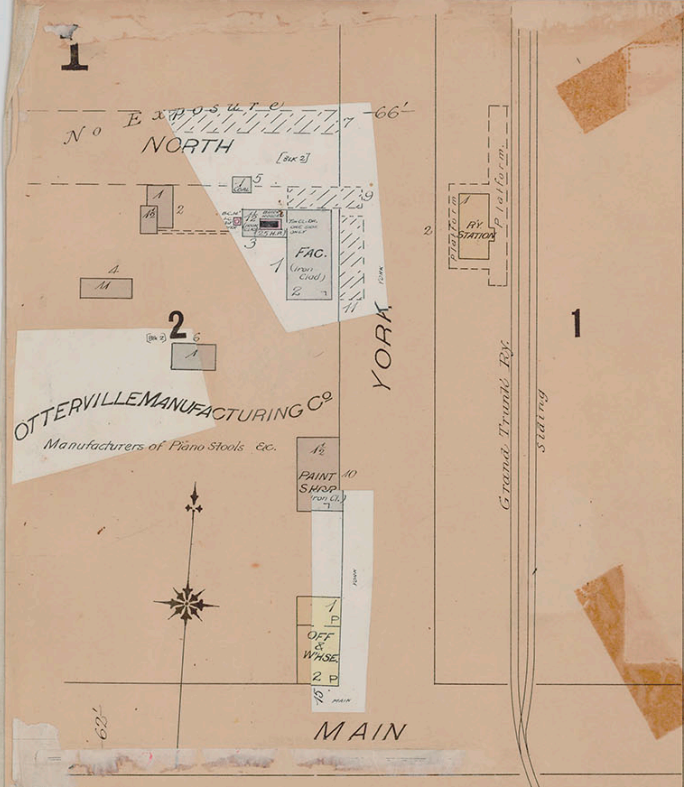


KEY

- BUILDINGS: RED ARE BRICK, COLORED BLUE ARE STONE
- YELLOW ARE WOODEN BUILDINGS
- BLACK - SHEDS BARN 80'
- EDGED WITH RED ARE VENEERED
- IF MARKED R.C. ROUGH CASTON PLASTER
- PROBABLE FIRE CUT OFF
- Slate Roof
- CORNER ROOF
- CONCRETE ROOF
- SHEDS OF WOOD
- SHEDS - SHEDS 80'
- TRAILS
- BRICKS
- BRICKS
- BRICKS UNDER
- WINDOWS: HEAD FROM LEFT TO RIGHT, FACING BUILDING
- 1" 2" 3" 4" 6" 8" 10" 12" 14" 16" 18" 20" 22" 24" 26" 28" 30" 32" 34" 36" 38" 40" 42" 44" 46" 48" 50" 52" 54" 56" 58" 60"
- IRON SHUTTERS
- BRICK PARAPET WALL
- STABLE
- GALLERY OR VERANDAH
- METAL CORNICE/SOLID LINE
- WOODEN CORNICE/BROKEN LINE
- SKYLIGHT - LINE UNDER DIRECT CORNER IN FLOOR
- LUMBER PILED
- HYDRANTS ON KEY PLAN
- TANKS ON KEY PLAN
- FIGURES IN BRACKETS (1/2) 60' DENOTE RELATIVE HEIGHTS OF GROUND
- N IN STREETS THUS (N) ARE STREET WIDTHS
- N DENOTES STONE
- DD DETACHED DWELLING SD SCATTERED DWELLING

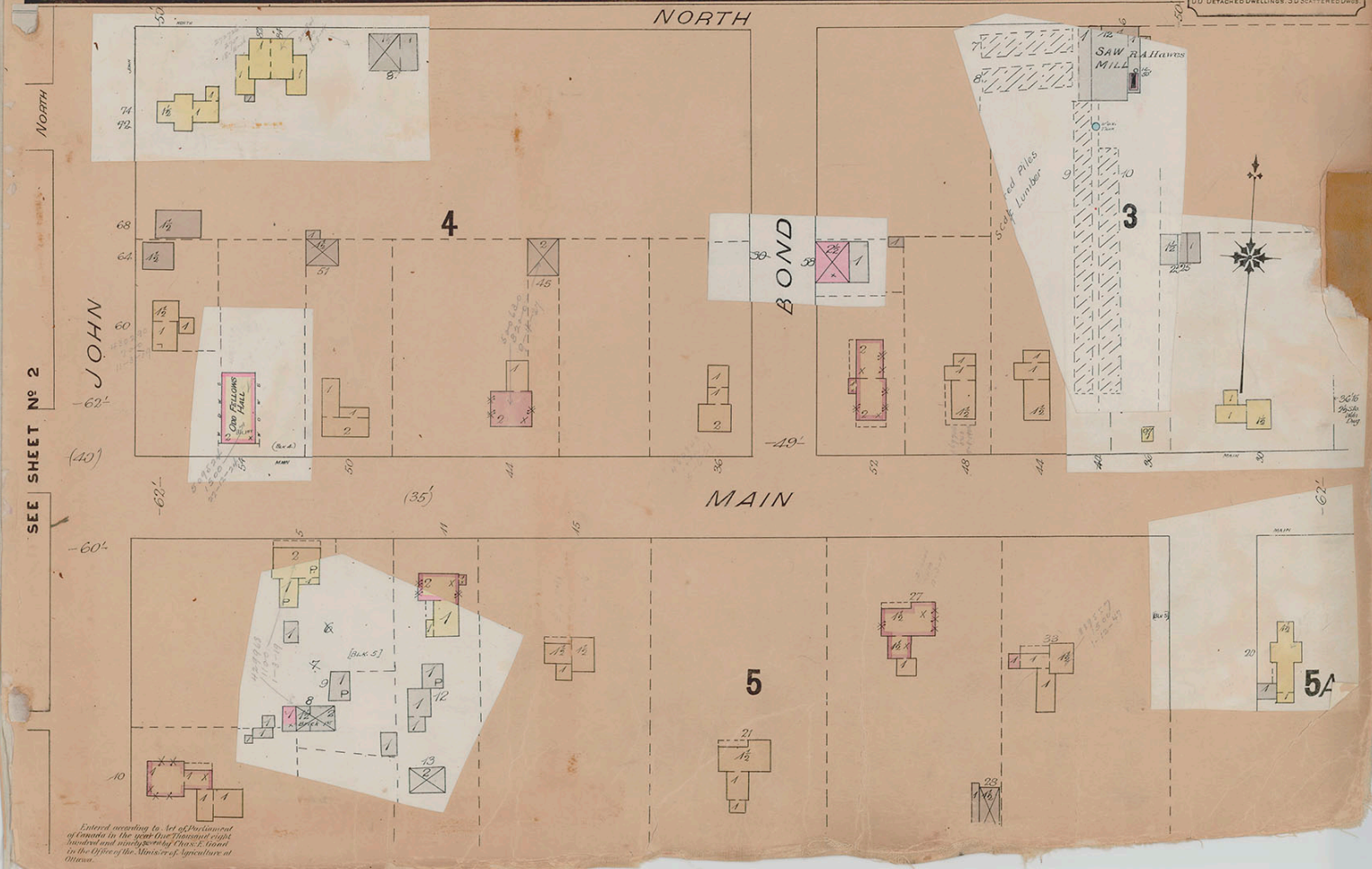
KEY PLAN

OTTERVILLE, Ont.
REVISED MAY 1897
REVISED TO JULY 1904.
POPULATION: 800
Water Supply: Creek.
1 Hand Fire Engine.
100' of Hose.
CHAS. E. GOAD C.E. MONTREAL
TORONTO, MONTREAL & LONDON, ENG.



OTTERVILLE MANUFACTURING CO.
Manufacturers of Piano Stools &c.

PAINT SHOP
OFF. & WARE



JOHN BOND

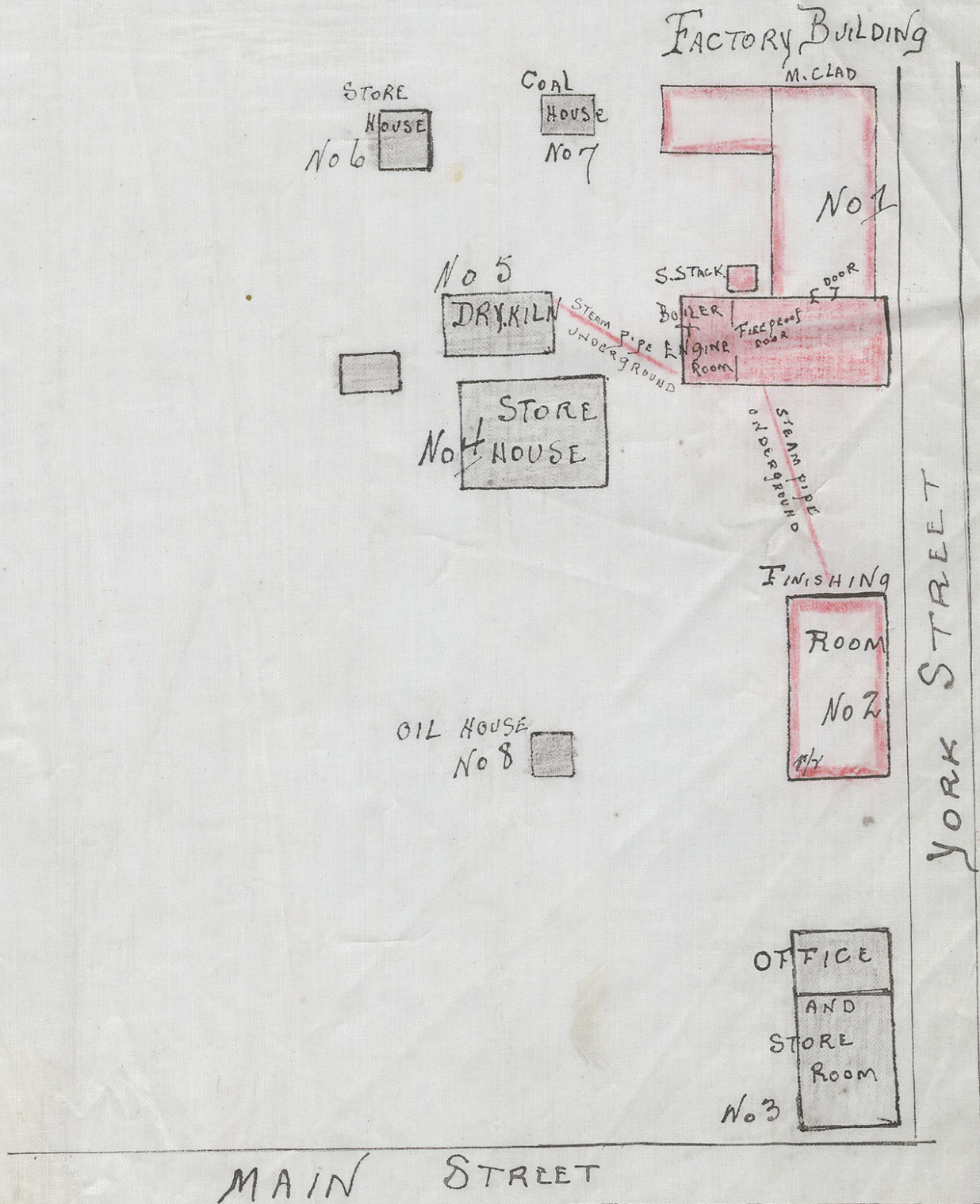
SAW RAIL MILL

SEE SHEET No 2

Entered according to Act of Parliament of Canada in the year four thousand eight hundred and ninety seven by Chas. E. Goad in the Office of the Minister of Agriculture at Ottawa.

DIAGRAM of THE OTTERVILLE MFG CO LTD OTTERVILLE ONT

SCALE 50 FT = 1 INCH



Dec 19/14

2

NAL 13764 (C)
C&W-2-SECT.
C-2-SECT.

Mill Pond

Vacant beyond

NORTH

2

OTTERVILLE ONT.
MAY 1897



10

Race

NEW

8

HOTEL

WILLIAM

BELOW

MAIN

LOSSING'S
BASKET FAC

Water power
Bayer for
making glue
(containing
10%)
MILLS
Race
Fall
1897

11

FLUME

33 & 34
FLOURMILL
S. LOSSING

Fall
1897

Vacant beyond

NORTH

6

BAPTIST CH.
18 to 19

CONTINUED FROM ABOVE



WILLIAM

MAIN

7

METH. CH.
26 to 27

SEE SHEET NO. 1
JOHN

9

SCALE 50 FT - 1 INCH.