

T W E N T I E T H

A

N

N

I

V

E

R

S

A

R

Y

.

.

.

Aimee Semple McPherson

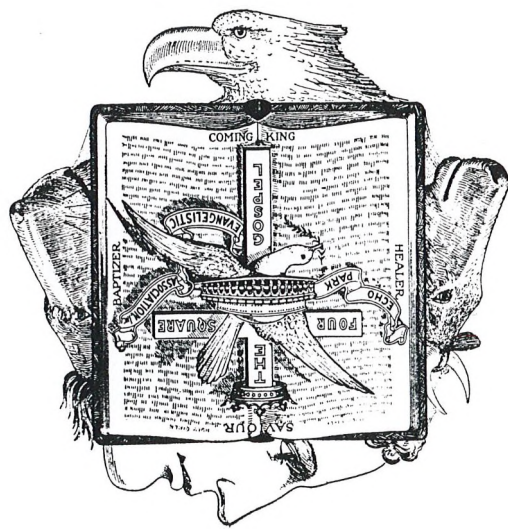
and the home of

THE FOURSQUARE GOSPEL



Angelus Temple

25^c





AIMEE SEMPLE McPHERSON

Pastor - Founder

Worlds Most Noted Evangelist

From Farm Yard to Pulpit!

Brief Romantic History



HE noted Evangelist and Pastor of Angelus Temple has a life story that reads like a fairy tale? Hers is a life of humbleness, accomplishment, and achievement of great things.

Aimee Semple McPherson was born on a small Canadian farm in Ontario, where she spent her life as an average child until she was converted at the age of 17. Then under the ministry of Robert Semple, the man who later became her husband, she entered the evangelistic work and missionary field.

Shortly after her marriage they went to China and entered the work where sometime later Robert Semple died. Her daughter, Roberta Star Semple, was born shortly afterward.

Sister McPherson returned to America and once again entered the evangelistic field traveling by car, pitching her tent here and there from coast to coast.

Coming to Los Angeles in 1922, she purchased the plot of ground and built beautiful Angelus Temple. Since that time she has pastored her church during one continuous revival, written many noteworthy books, some most glorious hymns and has composed, written and produced some of the most outstanding sacred oratories of this age.

Today her son Rolf McPherson assists his famous mother in the management of her enterprise.

A world traveller, she has preached on every continent. Packed the world's largest churches and auditoriums. Probably led Paper Headlines more than any other one person living.

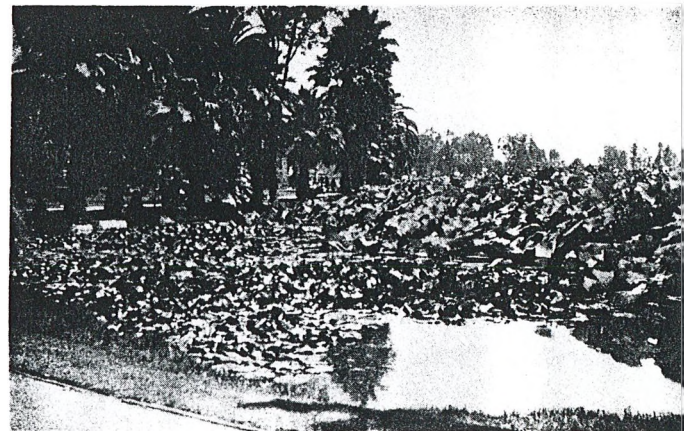
4

ANGELUS TEMPLE

LOS ANGELES



Worlds Largest Protestant
Church. Seats 5300 People.
On Wide Traffic Arteries Lead-
ing to Hollywood, Adjacent to
Beautiful Echo Park.



ECHO PARK

S I M P L E F A I T H

Doctrine

AMONG the thousands of theories advanced concerning the Bible and its teachings, none is truer to the teachings of Jesus Christ or more workable and none holds the satisfying portion that the Foursquare Gospel does. This Gospel is taught in Angelus Temple by its pastor, Aimee Semple McPherson, and its school of theology, L.I.F.E. Bible College.

A Gospel bounded by four tenets which encompass the entire plan of the ages concerning Christ—concerning man.

JESUS CHRIST, THE SAVIOR—a sacrifice for our sinful selves on Calvary's Cross.

JESUS CHRIST, THE HEALER—not only our Creator but the One able to heal our bodies—the Great Physician.

JESUS CHRIST, THE BAPTIZER—with the Holy Ghost—the giver of the necessary power in our lives and the realization of the fact that when we tarry we will be endued with this power from on high as in Acts 2:4.

JESUS CHRIST, THE COMING KING—In as much as Jesus promised us that He would come again and told us to occupy until His return, we look for His appearing.

Coupled with this great doctrine is a missionary zeal never before surpassed which has caused the Foursquare Gospel to go to the ends of the earth. This work is supported entirely by free will offerings of members, friends and well-wishers.

No legendary appointments are used to lend sacred impetus. Four simple symbols imply in turn the expression of the Gospel writers.

In Matthew, Christ is portrayed as a Royal Lion.

In Mark as a master burden bearer or the Ox.

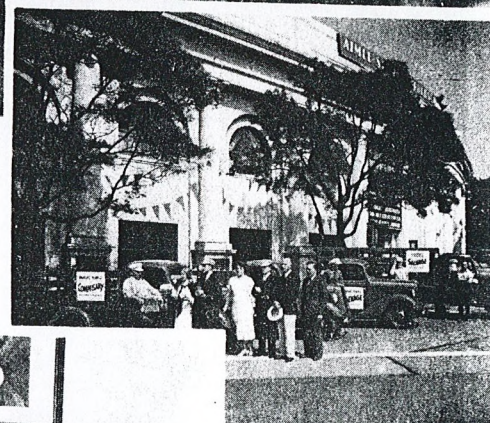
In Luke as the servant—a man.

In John as a divine spirit in the Eagle.

The word **FOURSQUARE** applies to the four simple tenets of faith as are expressed by the simple use of the Cross, The Cup, The Dove and The Crown.

No ritual marks any of the informal services other than water Baptism and the partaking of the Lord's Supper.





FAITH IN ACTION

over

1,000,000

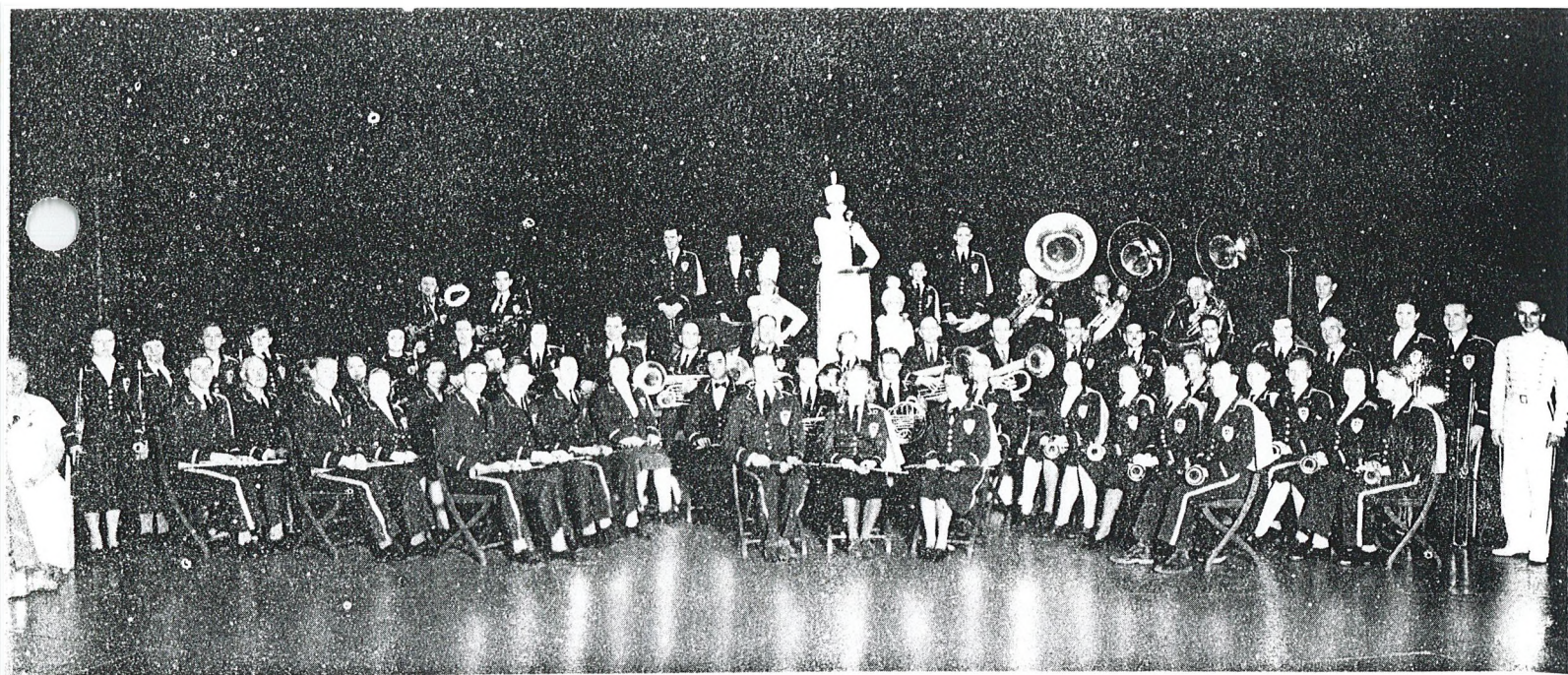
Persons

Have Been Fed, Clothed and
Materially Aided Through Her
Commissary.



Angelus Temple, the church with a big heart, opened its commissary September 11, 1927 and from that date to this present time there has been a constant flow of needy and despairing through its portals in search of food, shelter, work and clothing.

There have been over 1,000,000 persons fed and aided. Employment has been secured for over 15,000 persons.



63 DEPARTMENTS

FOUR DAILY SERVICES

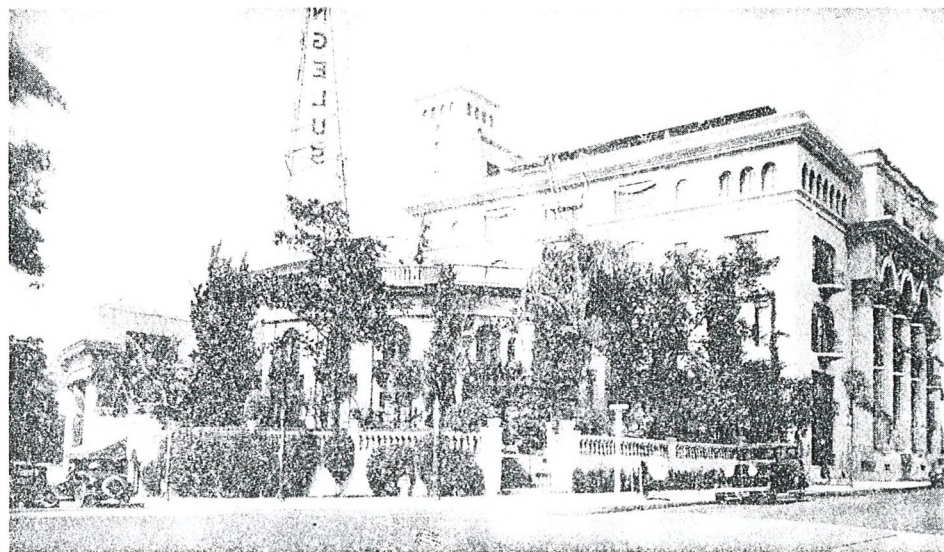
The Church of the Foursquare Gospel, which meets in Angelus Temple, has one of the most unique plans in the world — an organization designed to put forth the Foursquare Gospel with speed and power.

Aimee Semple McPherson its pastor. Under her is a General Business Manager, supported by 24 elders, men of the finest business ability possible to find. There are 63 departments of endeavor under the leadership of men and women who know God and are trained for their work.

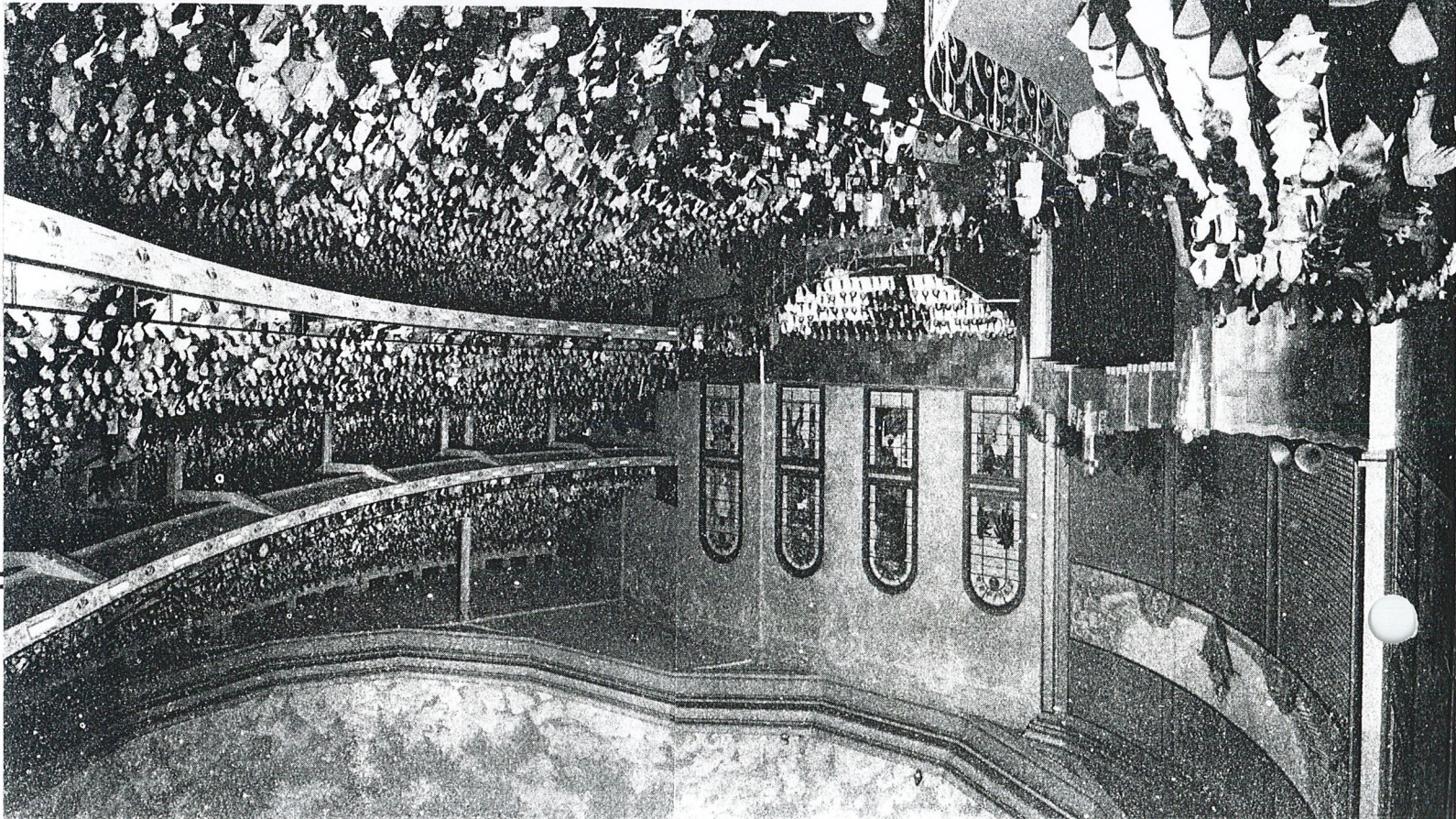
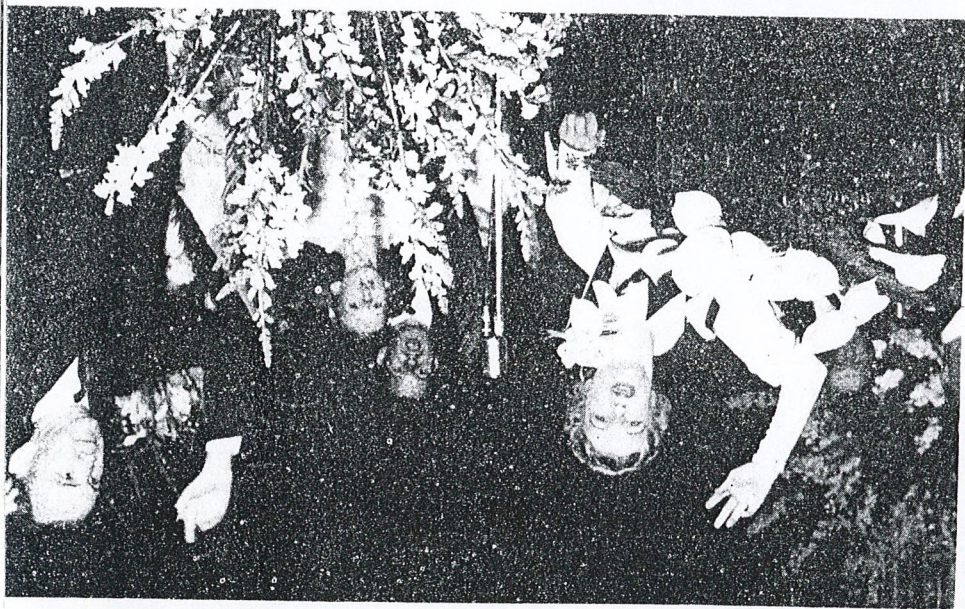
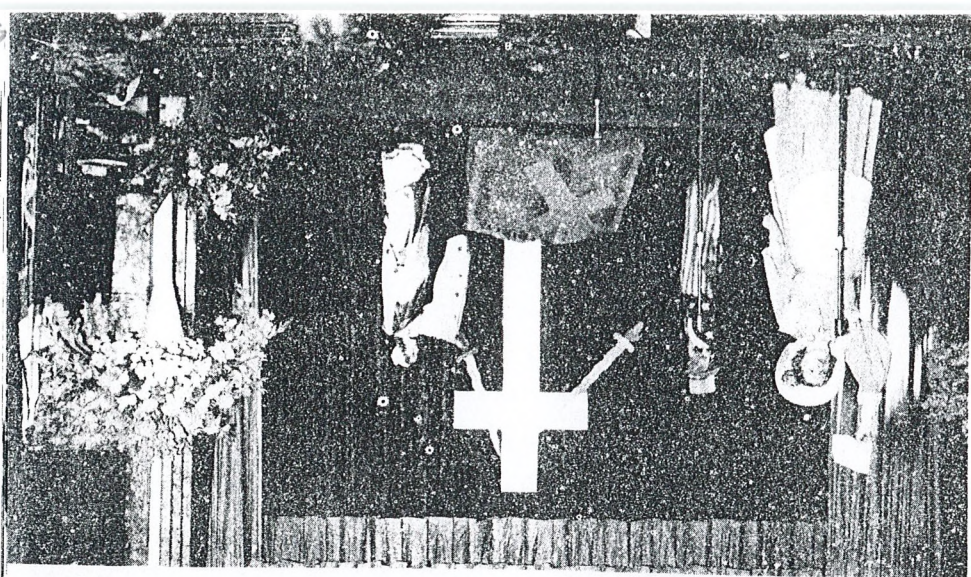
10:00 A.M. - 1:00, 2:30, 7:30 P.M.

NOTED AMONG THE DEPARTMENTS ARE:

1. Business Manager. 2. Angelus Temple Superintendent.
 3. Auditing. 4. Angelus Temple Life Line
 5. Altar Workers. 6. Advertising and Publishing
 7. Branch Church. 8. Bedside Ministry. 9. Bereavement.
 10. Boys and Girls Sewing. 11. 3 Bands. 12. City Sisters
 13. Church Secretary. 14. Commissary. 15. Construction.
 16. Conservatory of Music. 17. Crusaders-Angelus Temple.
 18. Crusaders (International). 19. 3 Choirs
 20. Childrens Church. 21. Costume Dept. 22. Dormitory.
 23. Daily Variation Bible School. 24. Employment Dept.
 25. Electrician. 26. Escorts. 27. Foursquare Publications
 28. Flowers. 29. Five Hundred Room
 30. Hospitality. 31. Information. 32. Janitors
 33. Jan. Workers. 34. Lavette Sewing and Distribution
 35. L.I.F.E. Bible College. 36. Maintenance
 37. Missionary. 38. Nursery. 39. New Convert Dept.
 40. New Members Dept. 41. 3 Orchestras
 42. Purchasing Dept. 43. Prayer Team. 44. Quilting Dept.
 45. Radio Dept. 46. Sunday School
 47. Stock Room & Mimeographing. 48. Restaurant
 49. Secretaries. 50. Student Employment
 51. Usher & Orderlies. 52. Watchman.
- Plus Sub. Divisions, Etc.



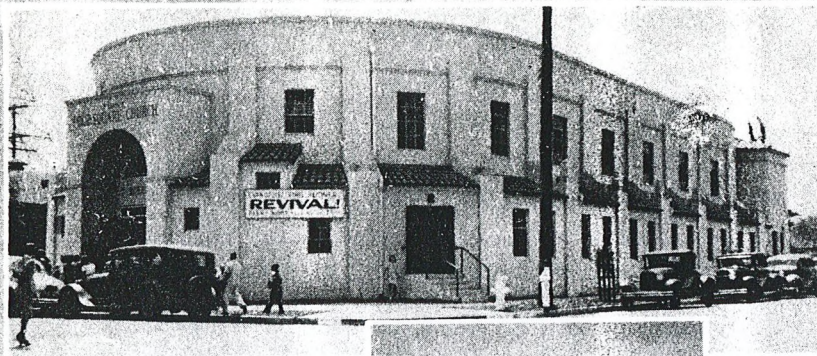
ANGELUS TEMPLE
PACK
SERMONS
ILLUSTRATED



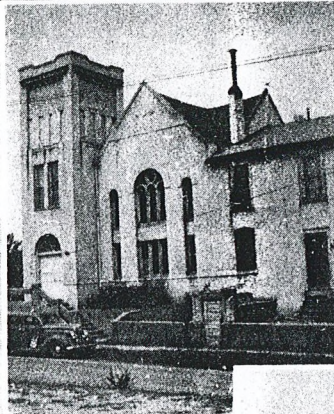
NEARLY 400 BRANCH CHURCHES • INTERNATIONAL CHURCH of

AIMEE SEMPLE McPHERSON, Founder President
Pastor of Angelus Temple

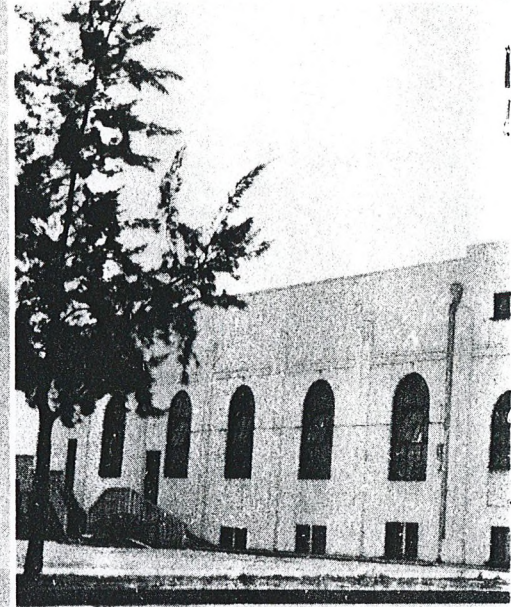
20TH ANNIVERSARY



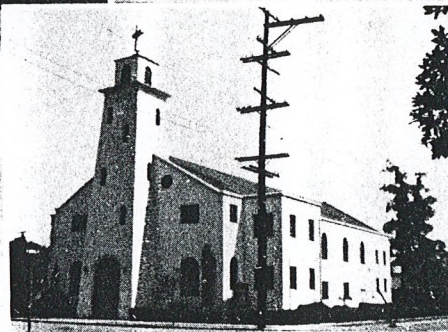
Long Beach, California
(First)



Meridian,
Mississippi

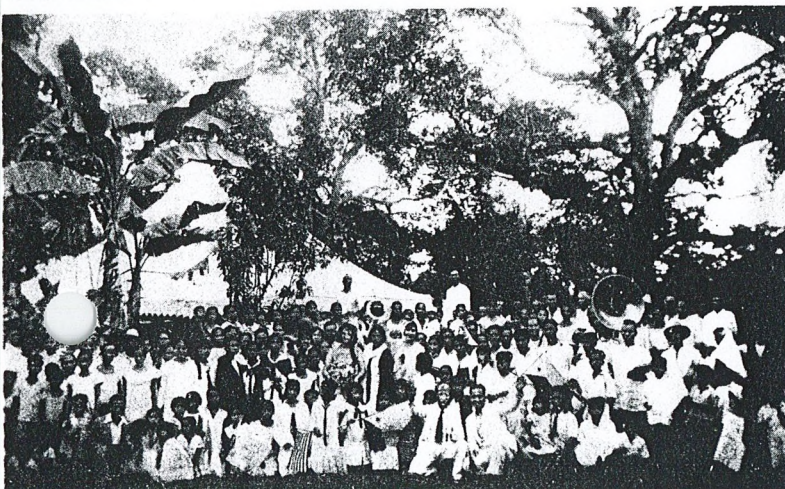


East Los Angeles

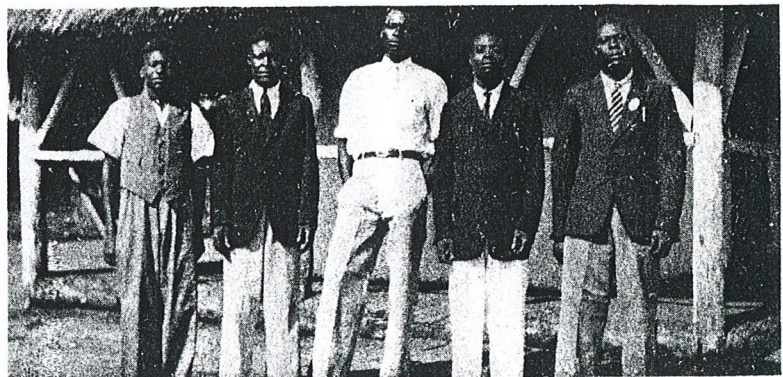


Pomona, California

F O U R S Q U A R E



With her Mission Stations in the Philippines



Foursquare Workers (Native) at Church in Africa

265 FOREIGN MISSION STATIONS

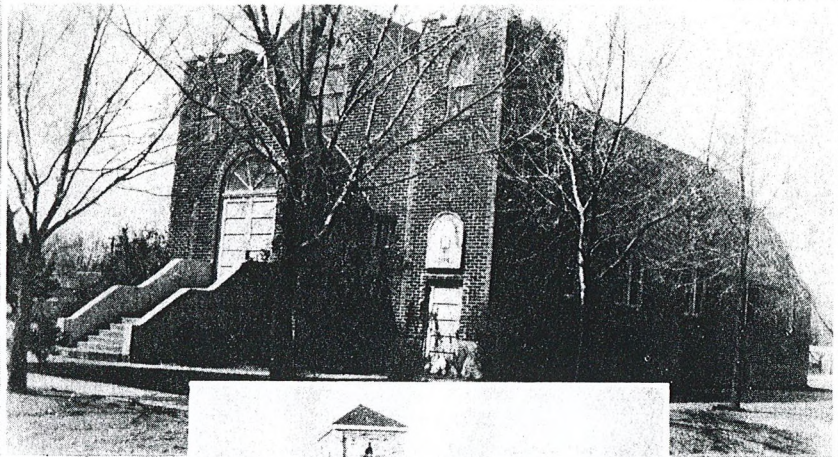
the **FOURSQUARE GOSPEL**..

RY 1922-1942

GILES N. KNIGHT, D.D., LL.D., Vice-President
Director of Foreign Missions



les, Calif.



Chappell,
Nebraska



Topeka, Kansas

MISSIONS



Foursquare Meeting House—Jungles of Bolivia



Foursquare Mission Station Puerto Rico

14,000 PRAYER REQUESTS PER MONTH

In Two Hour Shifts
Men Pray All Night
Women Pray All Day



24 HOURS A DAY

Letter, Phone, Cable,
Telegram, Messenger
touches the
Heart of Angelus Temple.

L
.
|
.
F
.
E
.
|

BIBLE
COLLEGE
INC.



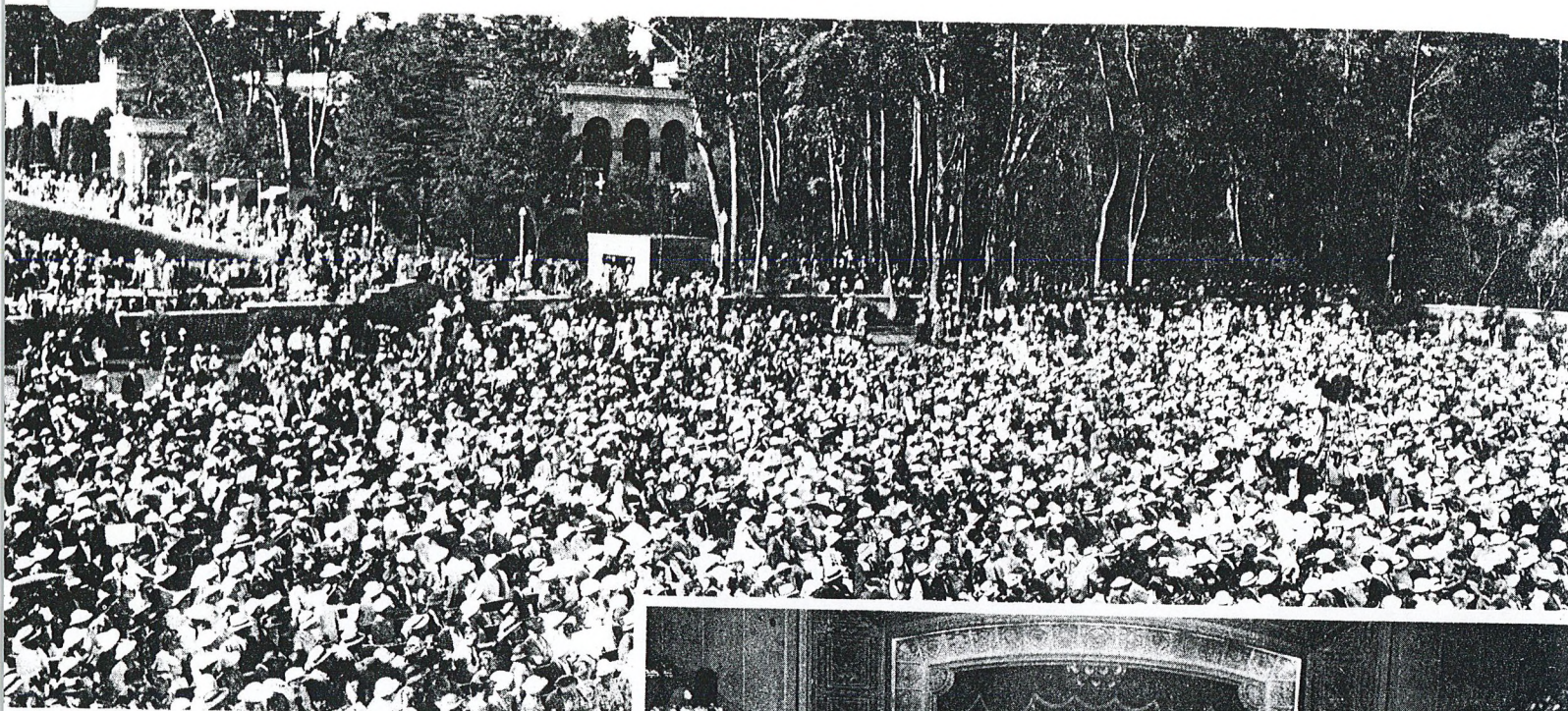
MAINSRING OF INTERNATIONAL ACTIVITIES

3300 MINISTERIAL GRADUATES

Here Aimee Semple McPherson With An Accredited Staff Instruct Young Men and Women in The Foursquare Gospel

Aimee Semple McPherson

HAS SPOKEN TO MORE PEOPLE PERSONALLY THAN ANY OTHER PERSON ALIVE



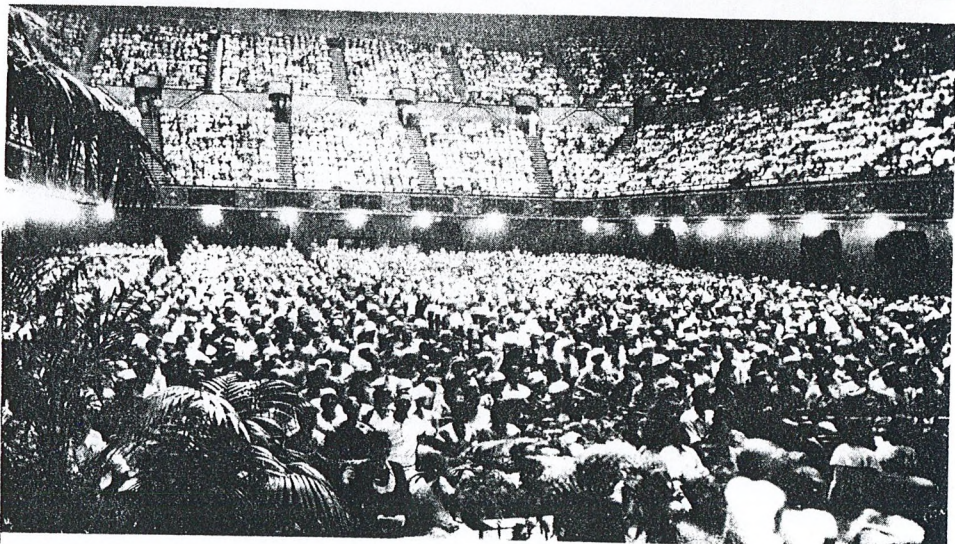
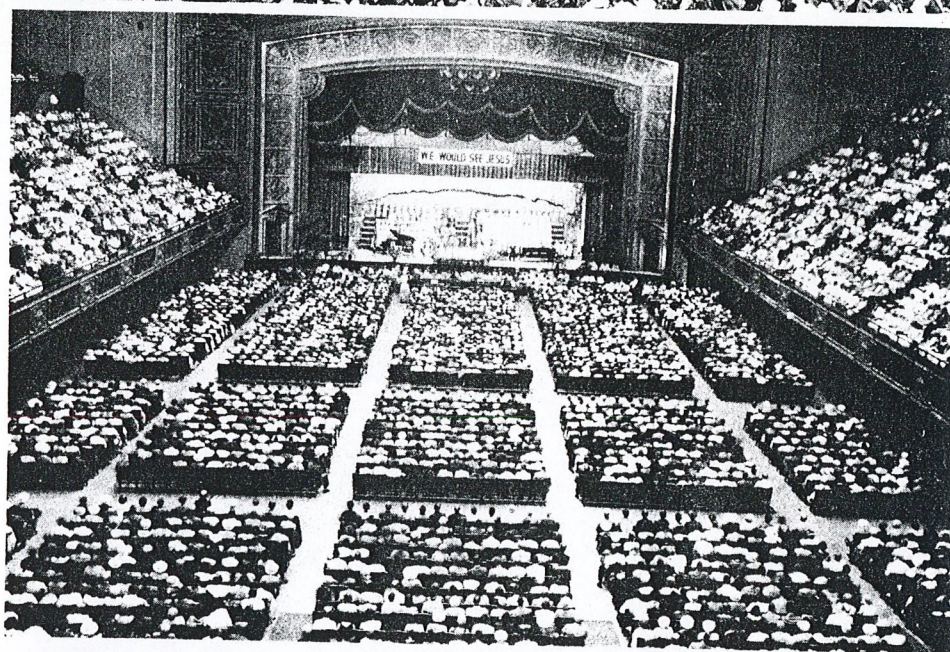
THRONGS THROUGHOUT THE WORLD

Europe's Largest Auditoriums

America's Largest Churches

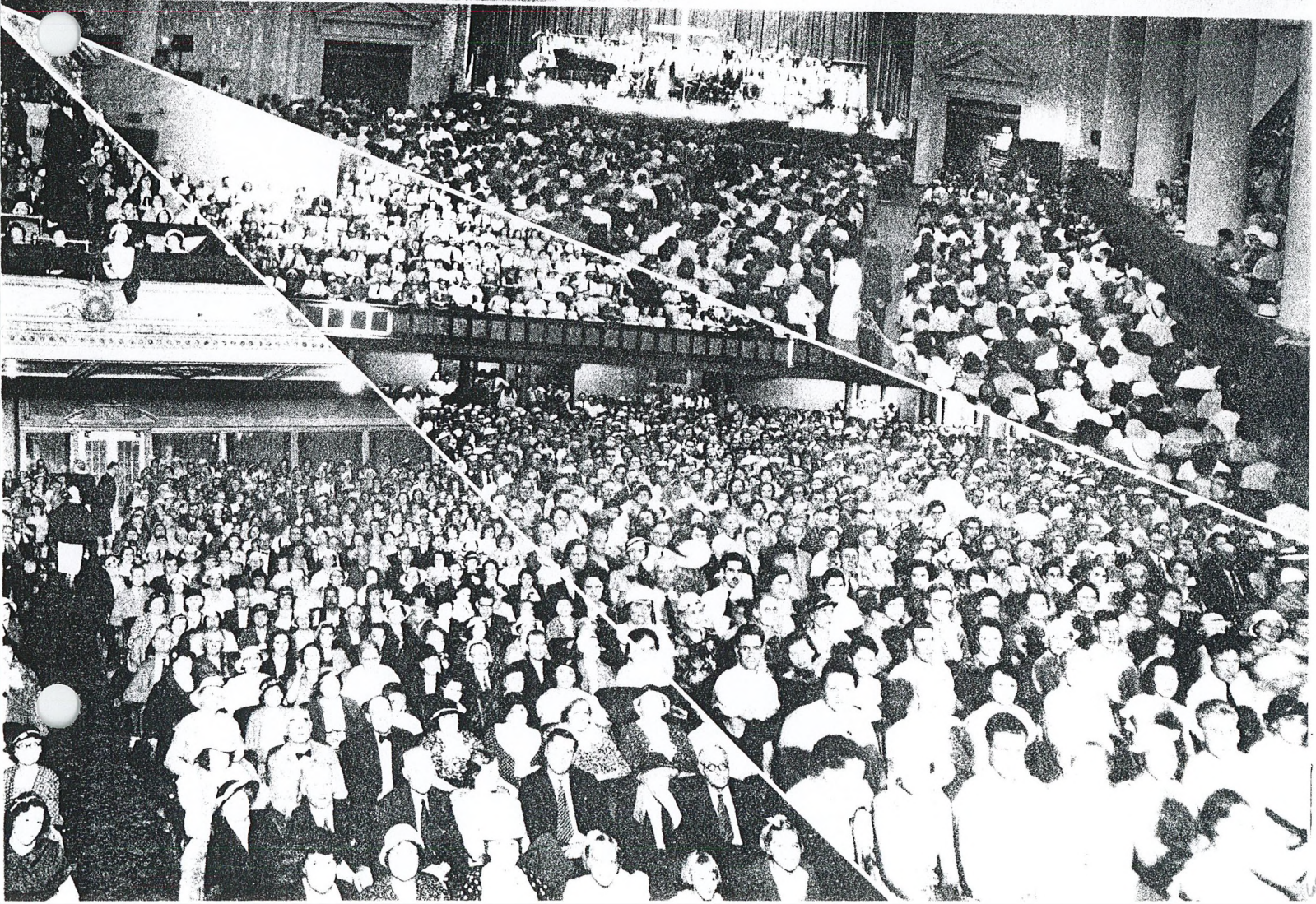
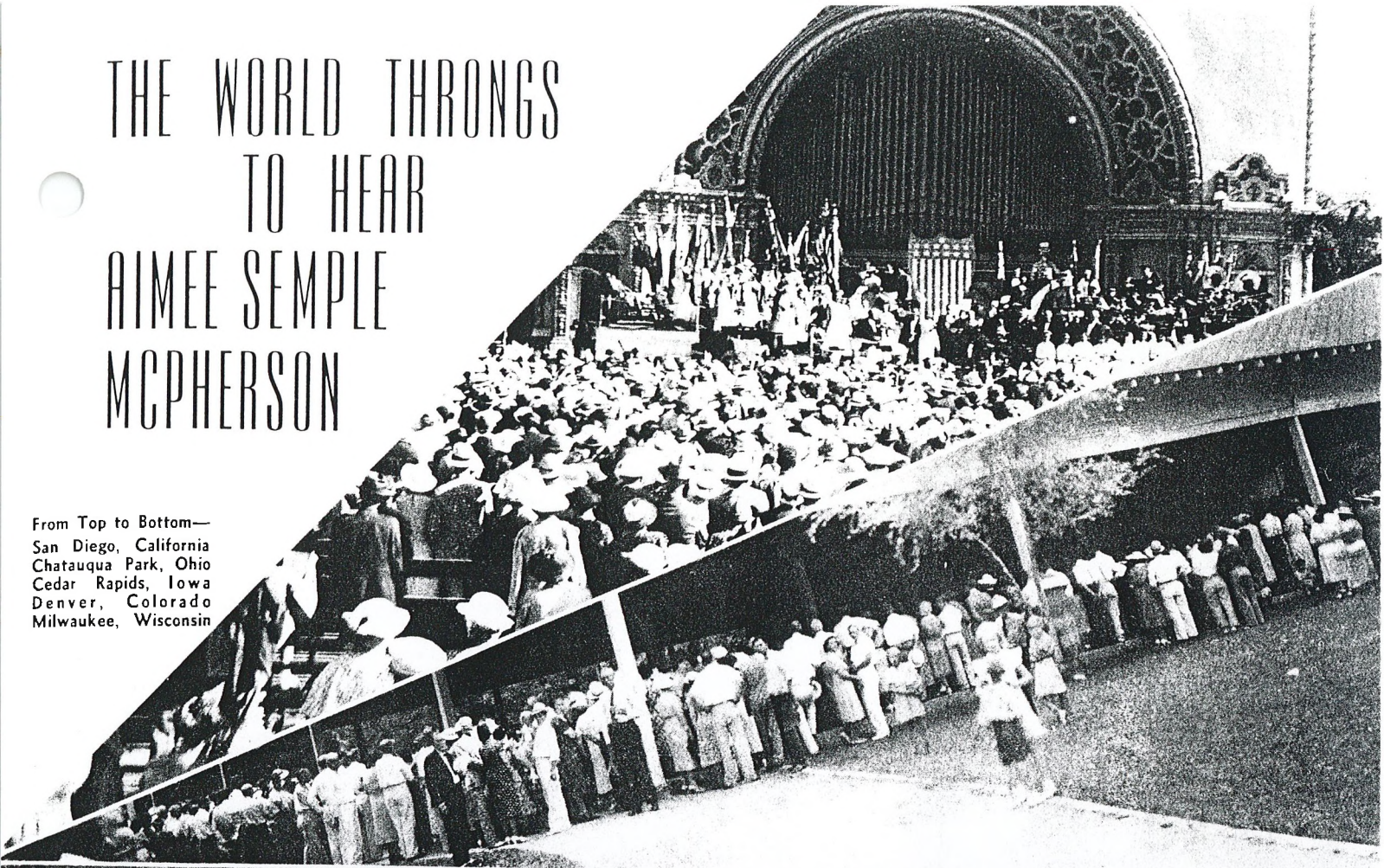
Theatres — Out Door

Asia - Australia - Holy Land



THE WORLD THROGS TO HEAR AIMEE SEMPLE MCPHERSON

From Top to Bottom—
San Diego, California
Chatauqua Park, Ohio
Cedar Rapids, Iowa
Denver, Colorado
Milwaukee, Wisconsin



K F S G

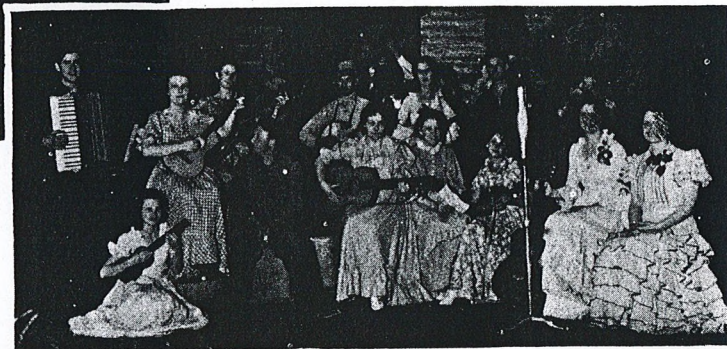
1150 KILOCYCLE

THE VOICE OF ANGELUS TEMPLE

Religious Services

Bands, Orchestras, Studio Drama

News, Commentary, Etc.



THE FOURSQUARE CRUSADERS

Aimee Semple McPherson's Young People
America's Fastest Growing Young Peoples' Work

PERSONNEL OF INTERNATIONAL ORGANIZATION!



Giles N. Knight, D.D., L.L.D.
Vice President - General Mgr.
Director Foreign Missions



Rev. Rolf McPherson
Director International Church
of the Foursquare Gospel
Editor Foursquare Crusader



W. B. Teatord, D.D.
Director
Dean of L.I.F.E. Bible College



Earl W. Dorrance, D.D., Th.D.
Director - Pastor



Rev. Myron Sackett
California Supervisor



Harold W. Jefferies, D.D., Th.D.
Northwest Supervisor



Frank A. Cummings, D.D.
Midwest Supervisor



Howard P. Courtney, D.D., Th.D.
Great Lakes Supervisor



Rev. Harold Chalfant
International Commander of
Foursquare Crusaders



Rev. Percy Philips
Dominion of Canada Supervisor



Rev. Chas. Gaines
Gulf States Supervisor

FOURSQUARE CHURCHES IN PRINCIPAL CITIES

California District . Anaheim; Arlington; Avalon Blvd., Los Angeles; Avenal; Azusa; Bakersfield; Baldwin Park; Barstow; Bell Gardens; Bell-Maywood; Big Bear City; Blythe; Brawley; Brentwood Heights; Burbank; Canoga; Colorado Blvd., Los Angeles; Compton; Corona; Costa Mesa; Covina; Culver City; Dinuba; Division St., Los Angeles; Downey; East Compton; East Hollywood; East Los Angeles; El Centro; El Monte; El Segundo; El Sereno; Encinitas; Escondido; Euclid Ave., Los Angeles; Filipino Mission, Los Angeles; Fillmore; Foursquare Mission, L.A.; Fullerton; Gardena; Garden Grove; Goodyear, Los Angeles; Graham-Firestone, Los Angeles; Hanford; Harbor City; Hawthorne; Hayward; Highland Park; Hooper Ave., Los Angeles; Huntington Beach; Inglewood; Italian Mission; Johannesburg; La Habra; Lancaster; Lincoln Heights, Los Angeles; Long Beach; Long Beach No. 2; Los Nietos; Lynwood; Marengo St., Los Angeles; Modesto; Monrovia; Monterey; Monterey Park; Moorpark; Newhall; North Hollywood; North Inglewood; Norwalk; Ojai; Ontario; Oxnard; Paloma St., L. A.; Pasadena; Pasadena (Mexican); Perris; Pomona; Redlands; Redondo Beach; Riverside; Riverside Drive, Los Angeles; Roscoe; Rosemead; San Bernardino; San Diego; San Fernando; San Gabriel (Mexican); San Jose; San Luis Obispo; San Pedro; Santa Ana; Santa Barbara; Santa Maria; Santa Monica; Santa Paula; South Gate; South Gate No. 2; South La Brea St., L. A.; South Montebello (Spanish); South San Pedro St., L. A.; Southwest, Los Angeles; Stockton; Sunnyvale; Taft; Torrance; Trona; Tujunga; Vallejo; Van Nuys; Venice; Ventura; Victorville; Watts (Mexican); West Hollywood; West Los Angeles; Whittier; Willowbrook.

Northern District . NORTHERN CALIFORNIA, Anderson; Chico; Corning; Crescent City; Orland; Red Bluff; Santa Rosa; Woodland; IDAHO, Boise; Emmett; Glenns Ferry; Nampa; Pinehurst; Salmon; MONTANA, Butte; Hardin; Miles City; OREGON, Ashland; Bellfountain; Columbia City; Gold Hill; Grants Pass; Hillsboro; Marshfield; Medford; Oregon City; Pendleton; Portland; Redmond; Salem; Springfield; Woodburn; WASHINGTON, Bellingham; Bremerton; Camas; Centralia; Everett; Longview; Olympia; Seattle; Shelton; Snoqualmie; Spokane; Tacoma; Vancouver; Yakima; WYOMING, Sheridan.

Great Lakes District ILLINOIS, Chicago; Chicago Heights; Danville; Decatur; De Kalb; Dixon; Galva; Rochelle; Rockford; Urbana; Waukegan; INDIANA, Anderson; Gary; Indianapolis; Kokomo; Marion; Muncie; Terra Haute; IOWA, Cedar Rapids; Des Moines; Des Moines (Faith); Fairfield; Independence; Muscatine; Newton; Osceola; Prairie City; Shellsburg; Tipton; Vinton; Winterset; MICHIGAN, Petoskey (Indian); MINNESOTA, Minneapolis; St. Peter; NORTH DAKOTA, Grand Forks; OHIO, Akron; Akron No. 2; Amherst; Cambridge; Canton; Chatham; Cleveland; Conneaut; Dover; East Orwall; Fostoria; Galion; Lucas; Mansfield; Newcomerstown; Stowe; Toledo; Uhrichsville; Wooster; Zanesville; PENNSYLVANIA, Gettysburg; York; SOUTH DAKOTA, Belle Fourche; Spearfish; WISCONSIN, Barron; Beloit; Kenosha; Rhinelander; Wausau.

Midwest District . ARIZONA, Eloy; Phoenix; Prescott; Tucson; Williams; Winslow; Yuma; COLORADO, Akron; Berthoud; Brighton; Canon City; Colorado Springs; Cortez; Denver; Durango; Eagle; Eaton; Florence; Fort Morgan; Frederick (Spanish); Kirk; Lamar; Milliken (Spanish); Monte Vista; New Castle; New Haven; Otis; Prospect Valley; Pueblo; Sterling; Yuma; KANSAS, Arkansas City; Burlington; Cadmus; Concordia; Emporia; Goodrich; Hutchinson; La Cygne; Newton; Parsons; Topeka; Wellington; Wichita; Wichita (North); Wichita (West); MISSOURI, Boonville; Cape Girardeau; Franklin; Jasper; Joplin; Kansas City; May; Perryville; NEBRASKA, Chappell; Fairbury; Hastings; Lincoln; North Platte; Omaha; Wisner; NEW MEXICO, Albuquerque; Clovis; Raton.

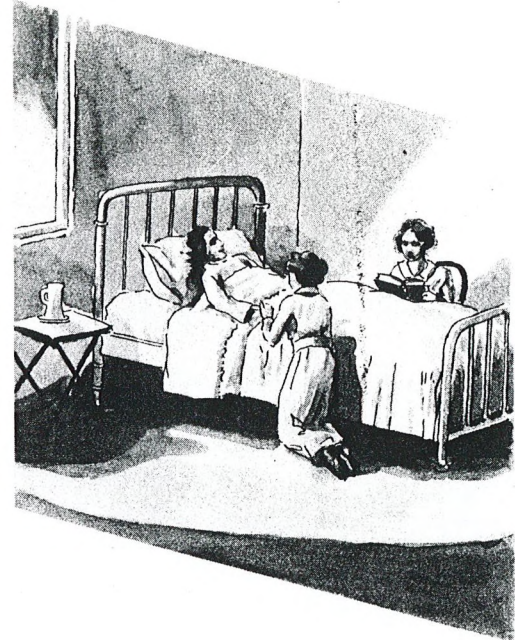
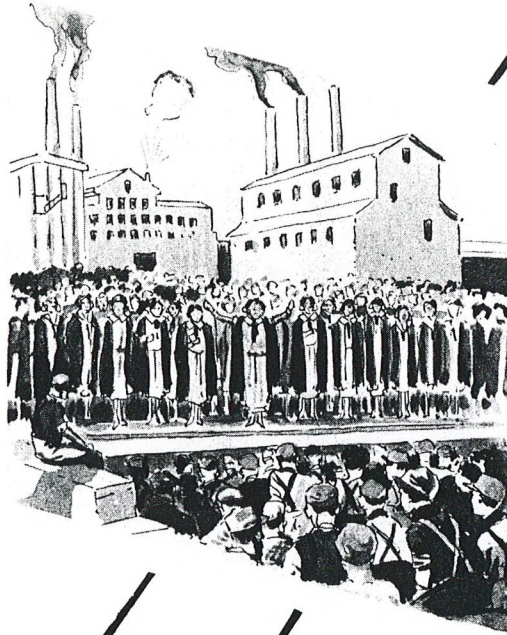
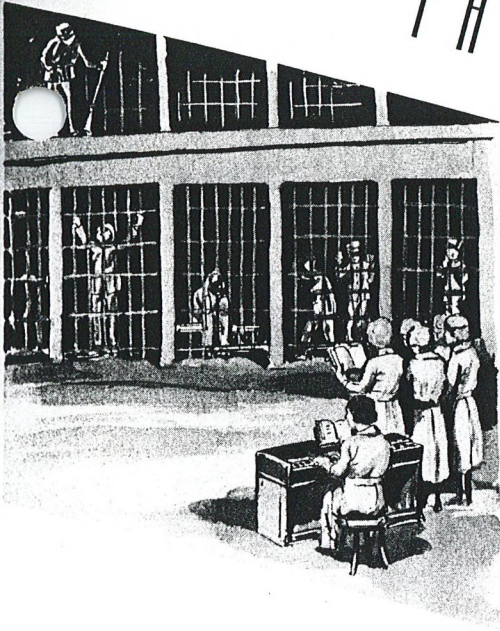
Gulf States District ALABAMA, Alexander City; Eufaula; Sylacauga; ARKANSAS, Little Rock; Pine Bluff; GEORGIA, Atlanta; Augusta; Columbus; Macon; LOUISIANA, New Orleans; Shreveport; MISSISSIPPI, Cleveland; Jackson; Meridian; OKLAHOMA, Guymon; Henryetta; Okmulgee; TENNESSEE, Dayton; Kingston; Rockwood; Spring City; TEXAS, Amarillo; Ballinger; Brownfield; Corpus Christi (Spanish); Dallas; Donna; Edinburg; El Paso; Fort Worth; Gilliam; Goree; Hale Center; Hamlin; Hargill; Knox City; Littlefield; Lubbock; Miles; Plainview; San Angelo; San Antonio; Texarkana; Weibert; Wichita Falls.

ATLANTIC SEABOARD DISTRICT, NORTH CAROLINA, Belmont; Concord; VIRGINIA, Norfolk; Roanoke.

Canadian District . Calgary, Alberta; Centre Dummer, Ontario; Courtnay, B.C.; Cranberry Lake, B.C.; Durham, Ontario; Eagle Hills, Sask.; Edmonton, Alberta; Esquimalt, B.C.; Haney, B.C.; Hastings St., Vancouver, B.C.; Lockside-Cater, Sask.; Maymont, Sask.; Medstead, Sask.; N. Battleford, Sask.; Norwood, Ontario; Penticton, B.C.; Richmond, B.C.; Stirling, Ontario; Trenton, Ontario; Vancouver, B.C.; Welland, Ontario; Winding River, Sask.



FAITHFUL



Conclusion

The time for religious difference is past. Our Nation, the greatest on earth, must return to a simple, workable Faith, whose experience covers all men. No man can live successfully without God. The very sinews of our enjoyable Freedom are bound together with a God-given appreciation, man and his relationship to Deity and the attending responsibility of those who know and appreciate this fact. A better world through our occupation must come else the Creator of all shall but shortly tolerate our useless existence.

